

Ampacoll® BKF

Butyl rubber window installation tape



internal

- ▶ Asymmetrically-divided liner for quick, clean installation. Slimmer side at the window frame, wider side in the reveal
- ▶ Optimum width for window insertion
- ▶ Fleece can be plastered-over

Ampacoll® BKF

in window and masonry joints



Roll dimensions

Length: 25 m / Width: 80 mm / Thickness: 1 mm

Box contents

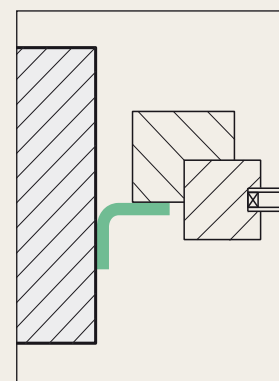
2 rolls = 50 m¹

Pallet details

40 boxes = 2'000 m¹

Technical details:


Storage time	2 years
Storage conditions	cool and dry
Working temperature	from 0 °C
Temperature resistance	-40 to +90 °C



10

Jahre Garantie*
Ans Garantie
Anni Garanzia
Years Warranty

* Security is part of the system at Ampack. We cover the cost of removal and replacement, and consequential damage, as well as the replacement materials.

 ISO 9001:2008
Swiss Research



Optimized for use with the following materials:

- ▶ Planned wood
- ▶ Raw wood *
- ▶ Wood fibreboard, soft to hard *
- ▶ OSB boards *
- ▶ Particleboard *
- ▶ Drywall *
- ▶ Plasterboard *
- ▶ Concrete (rough and smooth*)
- ▶ Brick *
- ▶ Plaster, mortar, gypsum etc. *
- ▶ Metals (aluminum, steel, etc.)
- ▶ PE components (e.g., paneling)
- ▶ PVC components (e.g., windows)
- ▶ Bitumen, sanded paths *

* always use primer

Product description

On one side there is a stable fleece that can be plastered over. On the other, the entire surface of the tape consists of butyl rubber, ideal for bonding to rough surfaces. The paper liner is divided asymmetrically, making installation both quick and clean. The narrower side should be positioned against the window, with the wider side against the reveal.

80 mm x 1 mm = matching width: 30 + 30 + 20 mm = left side + seam + right side

Ampacoll® BKF is very easy to form, malleable and vapor tight.

System for sealing windows

Bonding internally: **Ampacoll® FE**, **Ampacoll® F** or **Ampacoll® BKF**

Bonding externally: **Ampacoll® XT** – Meets the requirement for «the inside to be better sealed than the outside».

Application

- Installation of windows in masonry and concrete
- Vapor- and air-tight internal bonding in corners without settling, can be worked without cutting
- Junctions between timber and masonry (perimeter slab and timber wall, where rafters, beams and purlins penetrate, working piece by piece).
- Joining a vapor barrier to walls that are to be plastered later
- Rough, dusty or dirty surfaces should be pretreated with **Ampacoll® Connecto**

JUN2012

This paper can become invalid if new knowledge is acquired or new developments are made. Currently valid informations are available at www.ampack.eu © Ampack AG, Rorschach, 01.2012

Ampack AG
Seebleichstrasse 50
CH-9401 Rorschach
Phone +41 (0)71 858 38 00
Fax +41 (0)71 858 38 37
ampack@ampack.ch
www.ampack.eu

