

# Ampatop® RF Color plus

Coloured façade membranes for façades with open gaps



- > The fleece is made using recycled PET bottles (100%)
- > Long-term UV protection and age-resistant
- > Diffusion-open yet wind-proof
- > Fire behaviour: B-s1,d0
- > Special colours available on request for quantities of at least 500 m<sup>2</sup>
- > With a maximum percentage of opening of up to 80 mm / 50%
- > With integrated tapes on both sides

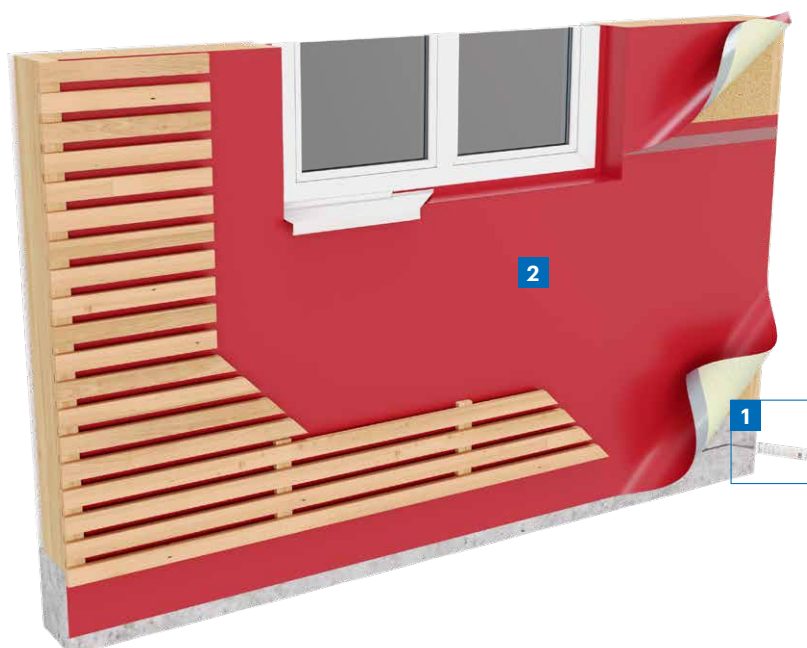
Technical details		Value	Standard
s <sub>d</sub> value		0,4m	EN 1931/ EN ISO 12572 C
Mass		230g/m <sup>2</sup>	EN 1849-2
Fire behaviour		B-s1,d0	EN 13 501-1, VKF
Resistance to water penetration		W1	EN 1928
Tensile strength	longitudinal transverse	370N/5cm 370N/5cm	EN 12 311-1
Elongation	longitudinal transverse	30% 30%	EN 12 311-1
Resistance to further tearing (nail)	longitudinal transverse	180 N 180 N	EN 12 310-1
Temperature resistance		-40°C – +80°C	
Outdoor weathering uncladded		3 months	
Gap width up to		80mm/50%	
UV stability (percentage of openings: max. 80 mm / 50%)		>10 years	EN 13859-2, appendix C, EN 1297, EN 1296
Light fastness after ageing		excellent (7)	

**Area of application:** Two-layer, highly tear-resistant façade membranes with a coloured, monolithic TPU coating for all curtain-type ventilated façades. **Ampatop® RF Color plus** façade membranes are suitable for partially open and open façade surfacing in wood, expanded metal or perforated plate.



Delivery forms			
Article number	Description	Roll dimensions	Pallet contents
7640442091414	Ampatop® RF Color plus black with integrated tapes on both sides	1,5m × 50m = 75m <sup>2</sup>	24 rolls = 1800m <sup>2</sup>
7640442091636	Ampatop® RF Color plus red with integrated tapes on both sides	1,5m × 50m = 75m <sup>2</sup>	24 rolls = 1800m <sup>2</sup>
7640442091612	Ampatop® RF Color plus white with integrated tapes on both sides	1,5m × 50m = 75m <sup>2</sup>	24 rolls = 1800m <sup>2</sup>

## Application



**Ampacoll® Profix**  
Liquid adhesive

- 2 Ampatop® RF Color plus red**  
Coloured façade membranes for façades with open gaps

## Tips for laying

**Ampatop® RF Color plus** can be laid horizontally or vertically with the coloured side facing outwards. The laying direction must not be different on each side of the building. Roll out the membrane, line it up, cut it to length, pull it tight and fix it in place, e.g. using stainless steel tacks (this should be invisible inside the overlap, which must be at least 10cm). Always mount the final mechanical fixation after laying (e.g. counter battens)! **Ampacoll® ND Pads** (nail seals) or **Ampacoll® ND Band** (nail sealing tape) should be used for this.

Tape the overlaps down with the integrated adhesive tapes to make them rain-proof and wind-proof. Rub the adhesive locations in well. The liquid adhesive

**Ampacoll® Profix** is used to bond **Ampatop® RF Color plus** or **Ampatop® F Color** to metal furring within the insulation layer. **Ampacoll® Profix** should also be used for necessary penetrations (e.g. for air vents, balcony mounts and cable holes) as well as window joints. Visible leakage of the adhesive must be avoided. The maximum distance horizontally or vertically is 1.45m, and the minimum width of the profiles is 4cm. The insulation must fill the entire cavity and be laid evenly and secured in place, so that the façade membrane is not negatively affected (no bulging, pushing out, etc.). When installing on wooden materials, pressure-resistant insulating materials or similar, it is recommended to bond using **Ampacoll® Profix** every 70cm horizontally and vertically,

especially when only individual or sporadic brackets are installed for final fixing. The maximum distance between individual attachments is 70 cm (horizontal and vertical). N.B.: Protruding attachments must be split at insulation level and should not penetrate the membrane (e.g. two-piece brackets with clamping flanges).



Please observe the recommendations for use and further system products in our adhesives matrix



Further information and detailed documentation at [www.ampack.biz](http://www.ampack.biz)

Sales via specialist dealers

Ampack Switzerland: +41 71 858 38 00  
Ampack Austria: +43 5523 53433  
Ampack Germany: +49 7621 1610264  
Ampack France: +33 4 50 83 70 54  
Ampack Italy: +39 471 053 475  
Ampack Ireland: +353 91 394 467  
[www.ampack.biz](http://www.ampack.biz)



The following information may have been superseded by new findings or developments.  
Current Information can be found at [www.ampack.biz](http://www.ampack.biz). © Ampack AG, Rorschach, 05.2023

3012EU/EXX.YYFO(AR)0523

