

Sisalex[®] 30



Trickle protection



- ▶ Dust proof
- ▶ Permeable
- ▶ 100% pure cellulose

Sisalex[®] 30



Roll dimensions

Length: 50 m / Width: 1,25 m / Area: 62,5 m²

Pallet content

81 rolls = 5'062,5 m²

Technical data:

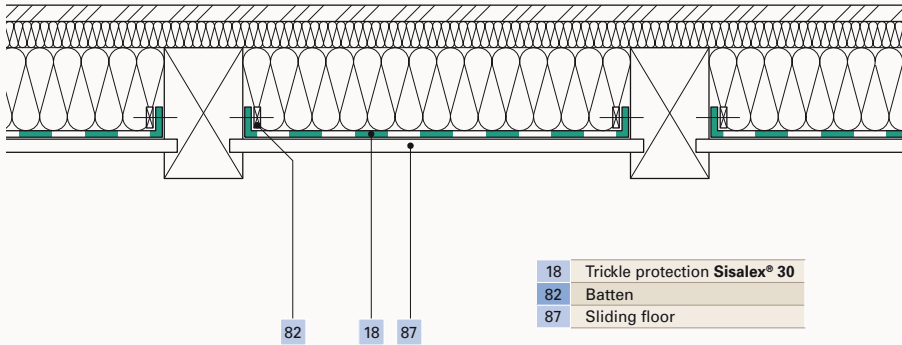
s ₀ value	0,04 m
μ value	423
Weight	80 g/m ²
Thickness	0,10 mm
Fire classification	4.2, VKF
Fire resistance	E, EN 13501
CE marking	EN13984:2005-02/2007

10

Jahre Garantie*
Ans Garantie
Anni Garanzia
Years Warranty

* Security is part of the system at Ampack. We cover the cost of removal and replacement, and consequential damage, as well as the replacement materials.

ISO 9001:2008
Swiss Research



The following adhesive products are suitable for application on **Sisalex® 30**:

- ▶ Ampacoll® XT
- ▶ Ampacoll® AT
- ▶ Ampacoll® INT
- ▶ Ampacoll® Profix
- ▶ Ampacoll® FE
- ▶ Ampacoll® DT
- ▶ Ampacoll® RA
- ▶ Ampacoll® BK 530
- ▶ Ampacoll® BK 535
- ▶ Ampacoll® Primer 531
- ▶ Ampacoll® Connecto

Laying tips

Sisalex® 30 is laid on a compact, flat, stable surface using a firmly bonded 10 cm overlap of **Ampacoll® INT** or **Ampacoll® AT**. Joints with other components are to be made with **Ampacoll® BK 530** or **Ampacoll® Superfix**. Joints with porous, dusty or rough surfaces should be pre-treated with **Ampacoll® Primer 531** or **Ampacoll® Connecto**.