

Sales brochure 2026



**Ampatop®
A silver plus**
Roof membrane

**Ampatop®
A black**
Wall membrane

**Ampatex®
A primo plus**
Vapour check

World's First



www.ampack.biz

Valid from 19 January 2026

New products

Ampatop® Protecta (plus) 3D Prefabrication

If you want your roofs installed and taped in just minutes in the future you are in the right place. With our roof membrane **Ampatop® Protecta (plus)**, a proven product in our range for decades, this is now possible thanks to 3D prefabrication.

> For details, see p.5



Ampacoll® XT FO

Tear-resistant adhesive tape system in two pre-folded versions on the roll. For airtight and windproof taping, for example of rafter and corner connections or window bonding in indoor and outdoor areas.

> For details, see p.50



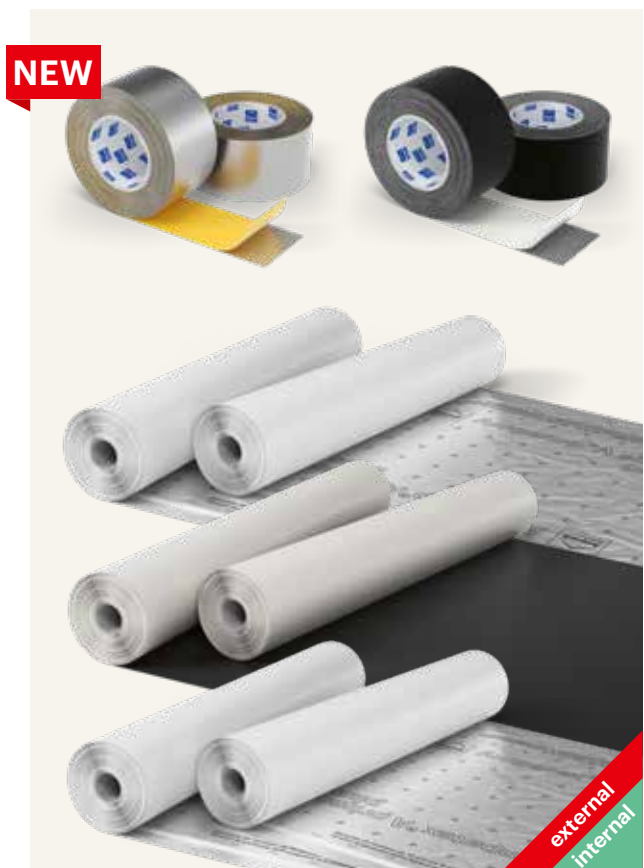
Non-combustible assortment

Within just five minutes, a small fire can escalate into a fully developed blaze. The consequences are devastating.

Ampack membranes of Euroclass A2-s1,d0 provide the solution, as they do not add to the fire load. Our products deliver maximum safety. We back this with clear specifications.

Our non-combustible system includes roof and façade membranes, a vapour check and adhesive tapes that ensure protection from both inside and outside.

> For details, see p. 8, 9, 22, 23, 29 and 53



Contents

02 New products

04 Roof membranes

- 04 Roof membranes
- 11 Weldable roof membrane
Ampatop® Seal (GHS)
- 14 Accessories for
Ampatop® Seal (GHS)

18 Wall membranes

- 18 Wall membranes
for closed façade
- 20 Wall membranes
for façade with open joints

24 Vapour checks

- 24 Vapour checks
Ampatex® and Sisalex®
- 28 Moisture-variable vapour checks
- 30 Vapour check for flat roofing

32 Formwork membranes

- 32 Weather-resistant vapour
checks – formwork membranes

34 Self-adhesive vapour check and weather protection

- 34 Self-adhesive vapour check
and weather protection

36 Vapour checks for renovations

- 36 Vapour checks for renovations

40 Vapour and emission barriers

- 40 Vapour and emission barriers,
moisture barriers, radon barrier
and trickle protection

42 Adhesive technology

- 42 Application photos adhesive
technology
- 46 Nail seals
- 47 Liquid adhesives
- 49 Acrylic adhesive tapes
- 54 Sealing patches
- 55 Vapour edge tape
- 55 Butyl-rubber adhesive tapes
- 57 Round cords made from
butyl rubber
- 58 Double-sided adhesive tapes
- 58 Self-adhesive inside and
outside corners
- 59 Primers for adhesive
- 60 Sleeves

64 Window installation products

- 65 Window connection tapes
- 68 Pre-compressed multifunctional joint
sealing strips
- 70 Window installation tapes
- 71 Window installation foam
- 71 Accessories adhesive
technology
- 72 POS-Display

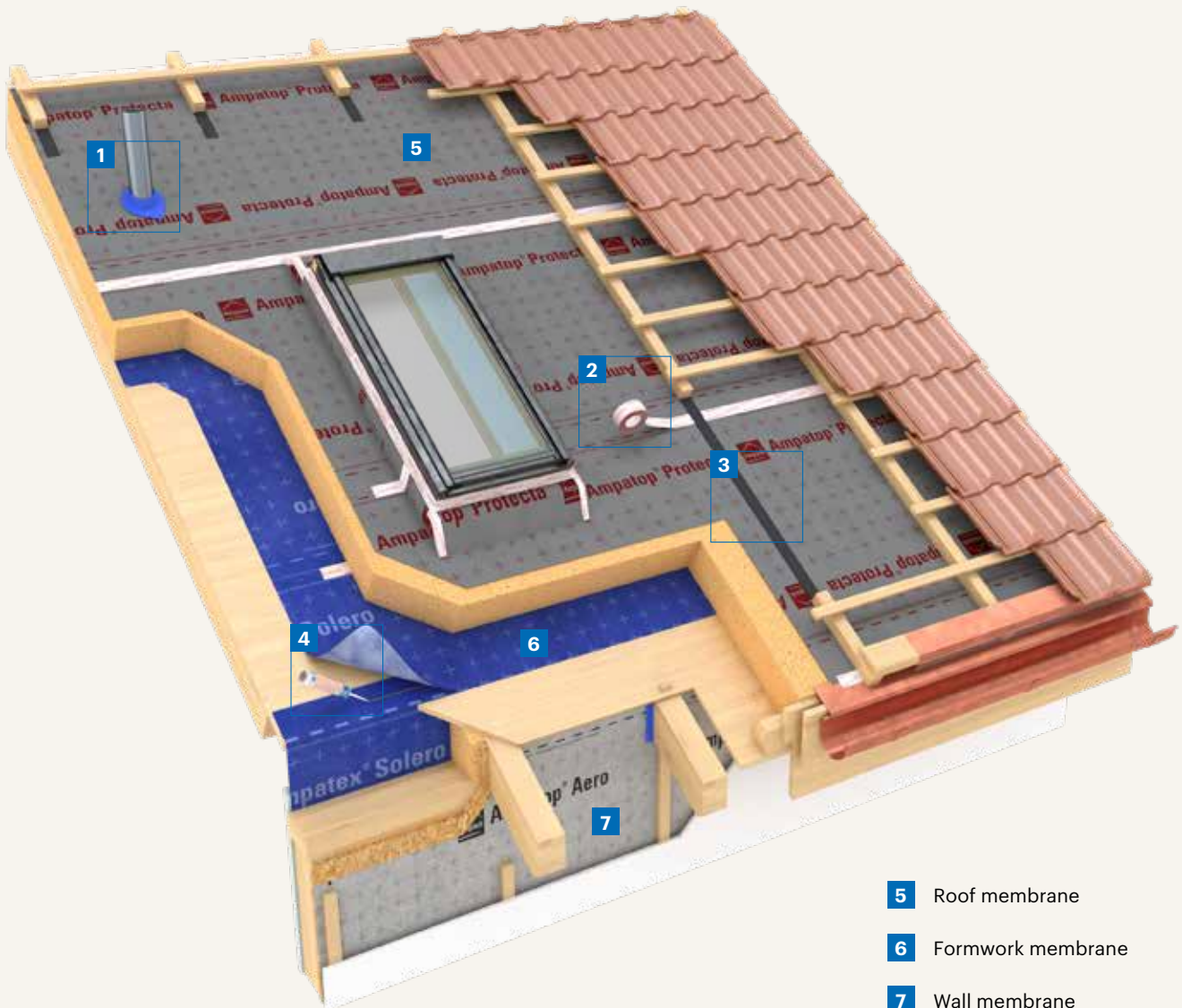
74 Noise protection

- 74 Heavy foils
- 75 Noise protection accessories

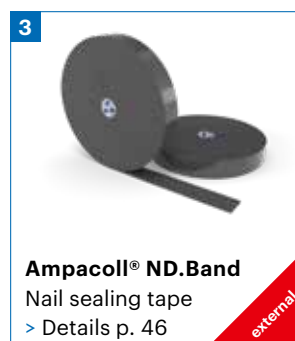
76 Ampack

- 76 The Ampack House
- 78 Ampack warranties
- 80 Adhesive Matrix
- 83 Product catalogue
- 84 The Ampack roof and
airtight system
- 86 General Terms and
Conditions of Business

Roof membranes



- 5 Roof membrane
- 6 Formwork membrane
- 7 Wall membrane



NEW 3D Prefabrication

We also supply **Ampatop® Protecta (plus)** in 3D pre-fabricated form. This offers significant advantages for craftsmen and architects:

- > Simple, efficient installation based on your construction plans
- > Precision-cut pieces for a perfect installation
- > No waste on construction site
- > 3D elements (e.g. dormers) including the correct bonding: controlled and technically proven
- > Huge time savings compared to conventional installation
- > Roof is immediately rainproof

Prefabrication is possible in any case up to a size of 30m in eaves length (right-angled) or 25m in eaves length (special) × max. 26m verge length per piece. Contact us for more information! We'd be happy to advise you on 3D prefabrication!



Video



Guide

Right-angled: Order with specification of "eaves length × verge length" (please indicate ridge position)



Special: Order according to plan (file format DWG, DXF). Illustrations are for reference only. Other shapes are also possible.



3D bonding: Order according to plan (file format DWG, DXF). Illustrations are for reference only. Other shapes are also possible.



— 3D bonding line

Roof area of 250 m² – installed in only 10 minutes!



1



2



3



4

Ampatop® Protecta plus

Roof membrane



Triple layer, highly tear-resistant roof membrane.
Monolithic technology

Technical details

s_d value	0,25 m
Resistance to water penetration	W1
Weight	200 g/m ²
Fire behaviour	E
Outdoor weathering	3 months
Minimum roof slope	10°
Tear resistance	longitudinal 360 N/5 cm transverse 270 N/5 cm
Resistance to further tearing (nail shaft)	longitudinal 210 N transverse 240 N
Temperature resistance	-40 to +80 °C



- > Monolithic technology: Rainproof even in adverse conditions
- > Extra-strong, age-resistant membrane: Lasts a lifetime
- > **Ampatop® Protecta plus:** Integrated tapes on both sides for faster installation
- > Printed cutting aid: Saves time

Article number	Description	Roll dimensions	Content of pallets
7640115533845	Ampatop® Protecta	1,5 m × 50 m = 75 m ²	24 rolls = 1800 m ²
7640115533869	Ampatop® Protecta plus integrated tapes on both sides	1,5 m × 50 m = 75 m ²	24 rolls = 1800 m ²
7640115537645	Ampatop® Protecta plus integrated tapes on both sides	3,0 m × 30 m = 90 m ²	25 rolls = 2250 m ²

NEW

Ampatop® Protecta (plus)

Prefabrication

Article number	Description	Roll dimensions
7640115533869	Ampatop® Protecta plus integrated tapes on both sides	
7640442092268	Ampatop® Protecta (plus) Prefabrication right-angled	Eaves length max. 30 m × max. 26 m verge length per piece Minimum order quantity: 100 m ²
7640442092275	Ampatop® Protecta (plus) Prefabrication special	Eaves length max. 25 m × max. 26 m verge length per piece Minimum order quantity: 100 m ²
7640442092343	Ampatop® Protecta (plus) Prefabrication Marking of the counter battens	
7640442092305	Ampatop® Protecta (plus) Prefabrication Marking cut-outs	
7640442092312	Ampatop® Protecta (plus) Prefabrication Cutting out the cut-outs	
7640442092329	Ampatop® Protecta (plus) Prefabrication Marking the penetrations	
7640442092282	3D bonding	
7640442092299	CAD Drawing	Created based on fully submitted DWG/DXF files. Verification and approval by the customer. Ampack accepts no liability for confirmed dimensions.
7640442092336	Express delivery	

* Conditions for the twenty-year premium warranty include registering the building object and the Ampack products used. In addition, our products must be used as part of a system. For further details, please see our General Warranty Conditions.

Ampatop® Aero (plus)

Roof membrane



Triple layer, highly tear-resistant roof membrane. PP fleece with coating.

Technical details

s_d value	0,04 m
Resistance to water penetration	W1
Weight	145 g/m ²
Fire behaviour	E
Outdoor weathering	3 months
Minimum roof slope	10°
Tear resistance	longitudinal 240N/5cm transverse 180N/5cm
Resistance to further tearing (nail shaft)	longitudinal 145N transverse 185N
Temperature resistance	-40 to +80 °C



- > Diffusion-open yet wind-proof
- > Cutting and orientation aid
- > Also suited as wall membrane
- > **Ampatop® Aero plus:** integrated tapes on both sides

Article number	Description	Roll dimensions	Content of pallets
7640115533821	Ampatop® Aero	1,5 m × 50 m = 75 m ²	28 rolls = 2100 m ²
7640115534798	Ampatop® Aero plus integrated tapes on both sides	1,5 m × 50 m = 75 m ²	28 rolls = 2100 m ²
7640115535542	Ampatop® Aero	3,0 m × 50 m = 150 m ²	28 rolls = 4200 m ²

Ampatop® Secura (plus)

Roof membrane



Double layer, highly tear-resistant roof membrane.

Monolithic TPU technology

Technical details

s_d value	0,15 m
Resistance to water penetration	W1
Weight	220 g/m ²
Fire behaviour	E
Outdoor weathering	3 months
Minimum roof slope	10°
Tear resistance	longitudinal 300N/5cm transverse 350N/5cm
Resistance to further tearing (nail shaft)	longitudinal 225N transverse 225N
Temperature resistance	-40 to +80 °C



- > Diffusion-open yet wind-proof
- > Cutting and orientation aid
- > Monolithic TPU technology
- > **Ampatop® Secura plus:** integrated tapes on both sides

Article number	Description	Roll dimensions	Content of pallets
7640115533920	Ampatop® Secura plus integrated tapes on both sides	1,5 m × 50 m = 75 m ²	24 rolls = 1800 m ²
7640115535580	Ampatop® Secura	3,0 m × 25 m = 75 m ²	35 rolls = 2625 m ²

Ampatop® A black

Non-combustible, diffusion-permeable black membrane for roofs

NEW



- > Fire behaviour: A2-s1,d0
- > Non-combustible: no contribution to fire in the ventilation level (curtain wall)
- > Extremely high tensile strength: fall-resistant in accordance with DIN 4426
- > High temperature resistance: particularly suitable behind energy-generating systems
- > UV-stable
- > Outdoor weathering: 9 months

Non-combustible, diffusion-permeable black membrane behind energy-generating systems (PV, solar) and as a fall-resistant roofing membrane.

Technical details

S _d value		0,06m
Resistance to water penetration		W1
Weight		220g/m²
Fire behaviour		A2-s1, d0
Natural weathering period		9 months (before installation of the façade lining)
Minimum roof slope		10°
Tensile strength	longitudinal transverse	2900N/5 cm 2150N/5 cm
Resistance to further tearing	longitudinal transverse	150N 160N
Temperature resistance		-35 bis + 120°C



CE
13859-1
13859-2

**5000-
hour-test**



Video

Item no.	Product name	Roll size	Pallet contents
7640442092107	Ampatop® A black	1,4m × 50m = 70m ²	36 rolls = 2520m ²

Ampatop® A silver plus

Non-combustible, diffusion-permeable membrane for roofs

NEW


Non-combustible, diffusion-permeable membrane behind energy-generating systems (PV, solar), and as a fall-resistant roofing membrane.

Technical details

S _d value		0,08m
Resistance to water penetration		W1
Weight		430g/m²
Fire behaviour		A2-s1, d0
Natural weathering period		9 months
Minimum roof slope		10°
Tensile strength	longitudinal transverse	3000N/5cm 3200N/5cm
Resistance to further tearing	longitudinal transverse	580N 450N
Temperature resistance		-35 bis +90°C
Emissivity		2%
Reflectivity		98%



5000-
hour-test

- > Fire behaviour: A2-s1, d0
- > Non-combustible: no contribution to fire in the ventilation level (curtain wall)
- > Extremely high tensile strength: fall-resistant in accordance with DIN 4426
- > UV-stable
- > Outdoor weathering: 9 months
- > Surface made of micro-perforated aluminium foil: diffusion-permeable, reflects heat and electromagnetic radiation
- > Suitable behind energy-generating systems

Item no.	Product name	Roll size	Pallet contents
7640442092121	Ampatop® A silver plus with integrated tape	1,2 m × 35 m = 42 m ²	24 rolls = 1008 m ²

Custom-made

Ampatop® Protecta (plus) 3D Prefabrication

> For details, see p. 5



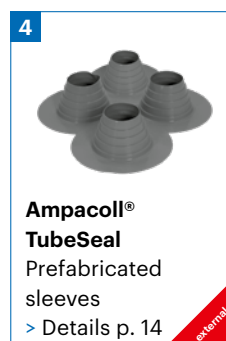
Video

Weldable roof membrane

Ampatop® Seal (GHS)



- 6** Weldable roof membrane
- 7** Nail sealing tape
- 8** Pressure roller
- 9** Eaves membrane



Ampatop® Seal

Weldable roof membrane



Triple layer weldable roof membrane. Overlaps and connections are welded seamlessly and homogenously. The membrane consists of a fleece and an upper and lower layer of TPU. **Monolithic TPU technology**

Technical details

s _d value	0,20m
Resistance to water penetration	W1
Weight	350g/m²
Fire behaviour	E
Outdoor weathering	3 months
Minimum roof slope	5°
Tear resistance	longitudinal 350N/5cm transverse 380N/5cm
Resistance to further tearing (nail shaft)	longitudinal 250N transverse 240N
Temperature resistance	-40 to +100°C
Welding temperature	240 to 280°C



Video

- > Monolithic technology: Rainproof even in adverse conditions
- > Can be hot and cold welded
- > Membrane is foldable without any loss of function
- > Printed cutting aid: Saves time
- > Cold resistant: Membrane does not break
- > Prefabrication possible: For faster installation and more safety
- > Suitable for rooftop PV systems

Article number	Description	Roll dimensions	Content of pallets
7640115534385	Ampatop® Seal	1,5 m × 30 m = 45 m²	30 rolls = 1350 m²
7640115534897	Ampatop® Seal Jumbo*	1,5 m × 400 m = 600 m²	1 roll = 600 m²
7640115535665	Ampatop® Seal	3,0 m × 20 m = 60 m²	30 rolls = 1800 m²
7640115535689	Ampatop® Seal Jumbo	3,0 m × 400 m = 1200 m²	1 roll = 1200 m²

*Delivery time on request



«When you build with Ampack, you build with a guarantee – now even with a 20-year premium guarantee!»

Magnus Vohn
Export Manager

Ampatop® Seal GHS

Weldable roof membrane



Triple layer weldable roof membrane. Overlaps and connections are welded seamlessly and homogenously. The membrane consists of a fleece and an upper and lower layer of TPU. **Monolithic TPU technology**

Technical details

s_d value	0,20 m
Resistance to water penetration	W1+
Weight	350g/m ²
Fire behaviour	E
Outdoor weathering	6 months
Minimum roof slope	3°
Tear resistance	longitudinal 350N/5cm transverse 380N/5cm
Resistance to further tearing (nail shaft)	longitudinal 250N transverse 240N
Temperature resistance	-40 to +100 °C
Welding temperature	240 to 280 °C
Abrasion resistance	passed
Hail resistance	HW 4



Quality seal of the association «Gebäudehülle Schweiz»



CE
13859-1

- > Monolithic technology: Rainproof even in adverse conditions
- > Can be hot and cold welded
- > Cold resistant: Membrane does not break
- > Membrane is foldable without any loss of function
- > Prefabrication possible: For faster installation and more safety
- > For low roof pitches
- > Hail resistant
- > Abrasion resistant: For safe walking during the construction phase
- > Suitable for rooftop PV systems

Article number	Description	Roll dimensions	Content of pallets
7640442090677	Ampatop® Seal GHS	1,5 m × 30 m = 45 m ²	30 rolls = 1350 m ²
7640442090714	Ampatop® Seal GHS Jumbo*	1,5 m × 400 m = 600 m ²	1 roll = 600 m ²
7640442090691	Ampatop® Seal GHS	3,0 m × 20 m = 60 m ²	30 rolls = 1800 m ²
7640442090738	Ampatop® Seal GHS Jumbo	3,0 m × 400 m = 1200 m ²	1 roll = 1200 m ²

*Delivery time on request

Ampatop® Seal (GHS)

Accessories



Ampatop® SealStripe

Ampatop® SealStripe is a strip-shaped blank of **Ampatop® Seal** for use as edging on skylights, chimneys, joints, cap flashing and cover strips on counter battens and for effecting repairs.

Technical details	
s _d value	0,20 m
Weight	350 g/m ²
Fire behaviour	E

Article number	Roll dimensions	Sales unit
7640115535160	37,5 cm × 30 m	1 roll



Ampatop® SealStripe GHS

Ampatop® SealStripe GHS is a strip-shaped blank of **Ampatop® Seal GHS** for use as edging on skylights, chimneys, joints, cap flashing and cover strips on counter battens and for effecting repairs.

Technical details	
s _d value	0,20 m
Weight	350 g/m ²
Fire behaviour	E



Quality seal of the association
«Gebäudehülle Schweiz»

Article number	Roll dimensions	Sales unit
7640442090776	37,5 cm × 30 m	1 roll



Ampacoll® LiquiSeal

Solution welding compound for seamless homogeneous welding of **Ampatop® Seal (GHS)**. No further adhesives, hot air or other consumables required.

Technical details	
Working temperature range	0 to + 70 °C
Consumption	approx. 1 litre for 200 m ² roof membrane

Article number	Content	Sales unit
7640115534446	1,25 l	6 tins
7640115534514	5 l	1 bucket



Ampacoll® LiquiSeal Applicator

Bottle and brush for easy application of **Ampacoll® LiquiSeal** on **Ampatop® Seal (GHS)**.

> Rectangular, non-roll bottle

Article number	Capacity	Sales unit/Set
7640115535313	500 ml	2 bottles & 5 brushes



Ampacoll® TubeSeal

Prefabricated sleeves for quick ceiling of standard pipe entries. Recommended for use for roof pitches up to 25°. **Ampacoll® TubeSeal** can be welded.

Technical details	
For penetrations with diameter of	80 – 120 mm
Maximum roof slope	25°

Article number	Carton content	Sales unit
7640115534866	4 sleeves	1 carton



Video

Ampacoll® Profix

Solvent-free, airtight, windtight, durable elastic liquid adhesive. Ideally suited for bonding TPU sheeting, connecting a membrane to the eaves flashing, lining overlaps on wind seals, and mounting wind seals on metal sections.

- > Permanently elastic and tacky
- > Ideal for TPU products
- > Resistance against condensation and run-off water
- > No primer necessary
- > Repositionable
- > Notched nozzle for a more even bead

Technical details

Storage	frost-free, cool and dry
Working temperature	+5 to +35 °C
Temperature resistance	-40 to +90 °C
Ageing resistance	> 20 years
Setting time	Two to three days
Solvents	solvent-free
Consumption	30–50 ml/m



Article number	Contents	Carton contents	Pallet contents
7640442090417	290 ml/cartridge	12 cartridges	130 cartons



Ampacoll® DoubleSeal

Double-sided adhesive moisture-resistant acrylic tape. The ideal jointing tape for metal sheeting and other flat surfaces.

Technical details

Working temperature range	above -5 °C
Temperature resistance	-30 to +90 °C

Article number	Roll dimensions	Carton content
7640115534941	30 mm × 25 m	8 rolls



Ampatop® SealEdge

Ampatop® SealEdge is a prefabricated eaves membrane with a UV-resistant PVC strip welded to an **Ampatop® Seal** roof membrane. The product is used to seal open eaves with perforated metal to drain water from the roof membrane into the gutters.

Technical details

Welding temperature Ampatop® Seal	240 to 280 °C
Welding temperature PVC strip	300 to 330 °C
UV stability Ampatop® Seal	3 months
UV stability PVC strip	> 10 years

Article number	Roll dimensions
7640115536945	600 mm × 30 m



Ampatop® SealEdge GHS

Ampatop® SealEdge GHS is a prefabricated eaves membrane with a UV-resistant PVC strip welded to an **Ampatop® Seal GHS** roof membrane. The product is used to seal open eaves with perforated metal to drain water from the roof membrane into the gutters.

Technical details

Welding temperature Ampatop® Seal	240 to 280 °C
Welding temperature PVC strip	300 to 330 °C
UV stability Ampatop® Seal	3 months
UV stability PVC strip	> 10 years



Quality seal of the association
«Gebäudehülle Schweiz»

Article number	Roll dimensions
7640442090752	600 mm × 30 m

Ampacoll® SealForm

Stretchable and flexible yet also durable special material for lasting corners, penetrations and connections.

Technical details

Outdoor weathering	6 months
Welding temperature Ampatop® Seal (GHS)	240 to 280 °C



Ampacoll® SealForm 1

Corner – short, 90°

l × w × h: 250 × 250 × 200 mm

- > Can be solvent or heat welded
- > Fits perfectly on **Ampatop® Seal (GHS)**
- > Cutting lines shown
- > Flat edges prevent capillary action
- > Material made from **Ampatop® Seal GHS**



Ampacoll® SealForm 5

Round patch

Ø 200 mm

- > Can be solvent or heat welded
- > Fits perfectly on **Ampatop® Seal (GHS)**
- > Flat edges prevent capillary action
- > Material made from **Ampatop® Seal GHS**



Ampacoll® SealForm 930/945

Penetration – high
30° / 45°

l × w × h: 400 × 400 × 250 mm
Ø 160 mm

- > Can be solvent or heat welded
- > Fits perfectly on **Ampatop® Seal (GHS)**
- > Material made from **Ampatop® Seal GHS**



Ampacoll® SealForm 11

Corner – long variable

l × w × h: 800 × 800 × 200 mm

- > Can be solvent or heat welded
- > Fits perfectly on **Ampatop® Seal (GHS)**
- > Cutting lines shown
- > Flat edges prevent capillary action
- > Material made from **Ampatop® Seal GHS**



Ampacoll® SealForm 20/410

Pipe collar for chimney

l × w × h: 630 × 600 × 275 mm
Ø 410 mm

- > Can be solvent or heat welded
- > Fits perfectly on **Ampatop® Seal (GHS)**
- > Material made from **Ampatop® Seal GHS**
- > Roof slope: 5° - 45°



Ampacoll® SealForm 660

Roof window skirt as U-shape

l × w × h: 755 × 660 × 375 mm

- > Can be solvent or heat welded
- > Fits perfectly on **Ampatop® Seal (GHS)**
- > Material made from **Ampatop® Seal GHS**



Ampacoll® SealForm 780

Roof window skirt as U-shape

l × w × h: 755 x 780 x 375 mm

- > Can be solvent or heat welded
- > Fits perfectly on **Ampatop® Seal (GHS)**
- > Material made from **Ampatop® Seal GHS**



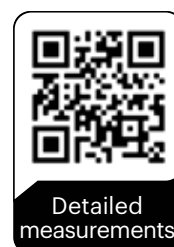
Ampacoll® SealForm 1140

Roof window skirt as U-shape

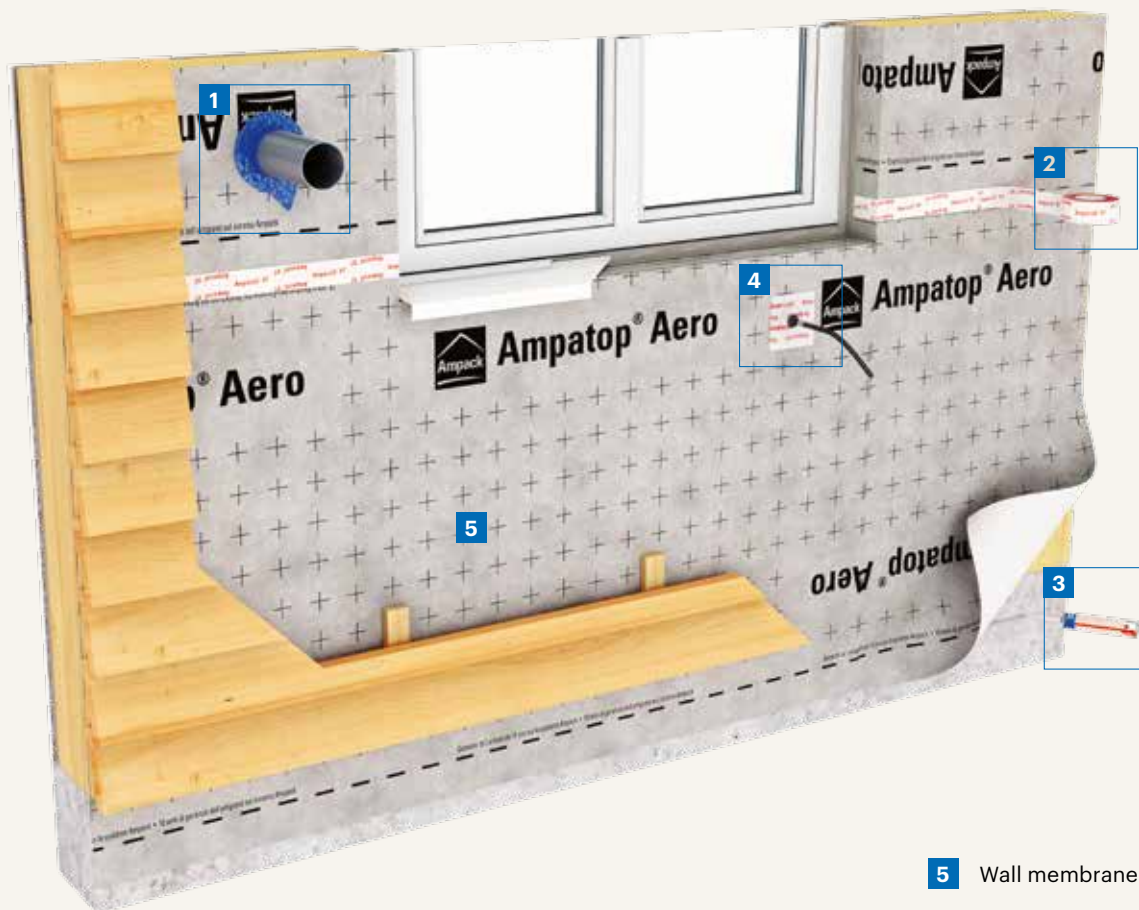
l × w × h: 755 x 1140 x 375 mm

- > Can be solvent or heat welded
- > Fits perfectly on **Ampatop® Seal (GHS)**
- > Material made from **Ampatop® Seal GHS**

Article number	Description	Carton content
7640115537195	Ampacoll® SealForm 1: Corner – short, 90°	4 pieces
7640115537218	Ampacoll® SealForm 5: Round patch	8 pieces
7640115537256	Ampacoll® SealForm 930: Penetration – high 30°	2 pieces
7640115537270	Ampacoll® SealForm 945: Penetration – high 45°	2 pieces
7640115537317	Ampacoll® SealForm 11: Corner – long variable	4 pieces
7640442091889	Ampacoll® SealForm 20/410: Pipe collar for chimney	2 pieces
7640442091919	Ampacoll® SealForm 660: Roof window skirt as U-shape	10 pieces (5 bags of 2 pieces each)
7640442091940	Ampacoll® SealForm 780: Roof window skirt as U-shape	10 pieces (5 bags of 2 pieces each)
7640442091971	Ampacoll® SealForm 1140: Roof window skirt as U-shape	10 pieces (5 bags of 2 pieces each)



Wall membranes for closed façades



5 Wall membrane



Ampatop® Aero (plus) Wall membrane



Triple layer, highly tear-resistant wall membrane. PP fleece with coating.

Technical details

s_d value	0,04m
Resistance to water penetration	W1
Weight	145 g/m ²
Fire behaviour	E
Outdoor weathering	3 months
Tear resistance	longitudinal 240 N/5 cm transverse 180 N/5 cm
Resistance to further tearing (nail shaft)	longitudinal 145 N transverse 185 N
Temperature resistance	-40 to +80 °C



- > Diffusion-open yet wind-proof
- > Cutting and orientation aid
- > **Ampatop® Aero plus:**
integrated tapes on both sides

Article number	Description	Roll dimensions	Content of pallets
7640115533821	Ampatop® Aero	1,5 m × 50 m = 75 m ²	28 rolls = 2100 m ²
7640115534798	Ampatop® Aero plus integrated tapes on both sides	1,5 m × 50 m = 75 m ²	28 rolls = 2100 m ²
7640115535542	Ampatop® Aero	3,0 m × 50 m = 150 m ²	28 rolls = 4200 m ²

Ampatop® Reflecto WS Wall membrane



Triple layer reflective external breathable wall membrane.

Technical details

s_d value	0,08m
Resistance to water penetration	W2
Weight	140 g/m ²
Fire behaviour	E
Outdoor weathering	3 months
Tear resistance	longitudinal 270 N/5 cm transverse 220 N/5 cm
Resistance to further tearing (nail shaft)	longitudinal 160 N transverse 160 N
Temperature resistance	-40 to +80 °C
Emissivity value	≤ 3



- > Reflective foiled membrane increases thermal performance of structure
- > Breathable vapour open wall membrane
- > Cutting and orientation aid
- > Breathable membrane reducing the risk of condensation

Article number	Description	Roll dimensions	Content of pallets
7640115537683	Ampatop® Reflecto WS	2,7 m × 100 m = 270 m ²	15 rolls = 4050 m ²
7640115537669	Ampatop® Reflecto WS	3,0 m × 100 m = 300 m ²	15 rolls = 4500 m ²

Wall membranes for façade with open joints



Ampatop® F black plus

Wall membrane



- > UV-resistant
- > Ten-year product guarantee with a joint width up to 50mm/40%
- > Integrated tape
- > Monolithic TPU technology

Double layer, highly tear-resistant black façade membrane for façades with open joints. According to EN13859-2 for walls with open joints, artificial ageing is carried out with 5000 hours of UV exposure (standard is 336 hours).

Monolithic TPU technology

Technical details			
s _d value			0,09 m
Resistance to water penetration			W1
Weight			220 g/m ²
Fire behaviour			E
Outdoor weathering			3 months (before installation of façade cladding)
UV stability			> 10 years
Tear resistance	longitudinal		300 N/5 cm
	transverse		340 N/5 cm
Resistance to further tearing (nail shaft)	longitudinal		200 N
	transverse		185 N
Temperature resistance			-40 to +80 °C



5000-hour-test

Article number	Description	Roll dimensions	Content of pallets
7640115536075	Ampatop® F black plus integrated tape	1,5 m × 50 m = 75 m ²	28 rolls = 2100 m ²

Ampatop® RF black (plus)

Low-flammable wall membrane



- > UV stable
- > The fleece is made using recycled PET bottles (100%)
- > Ten-year product warranty for joint width up to 50mm/40%
- > Fire behaviour: B-s1, d0
- > **Ampatop® RF black plus:** integrated tape

Two-layer, low-flammable black wind seal for façades with open joints, consisting of a PET fleece with TPU coating. According to EN 13859-2 for walls with open joints, artificial ageing was carried out with 5000 hours of UV exposure (standard is 336 hours).

Technical details			
s _d value			0.15 m
Resistance to water penetration			W1
Weight			225 g/m ²
Fire behaviour			B-s1, d0
Natural weathering period			3 months (prior to installation of façade surfacing)
UV stability			> 10 years
Tensile strength	longitudinal		400 N / 5 cm
	transverse		370 N / 5 cm
Resistance to further tearing	longitudinal		150 N
	transverse		160 N
Temperature resistance			-40 to +80 °C



5000-hour-test

Article Number	Description	Roll dimensions	Content of pallets
7640442091216	Ampatop® RF black	1,5 m × 50 m = 75 m ²	28 rolls = 2100 m ²
7640442091230	Ampatop® RF black plus integrated tape	1,5 m × 50 m = 75 m ²	28 rolls = 2100 m ²
7640442091254	Ampatop® RF black	3,0 m × 30 m = 90 m ²	28 rolls = 2520 m ²

Ampatop® RF Color plus

Wall membrane



- > The fleece is made using recycled PET bottles (100%)
- > Long-term UV protection and age-resistant
- > Diffusion permeable yet watertight
- > Fire behaviour: B-s1,d0
- > Special colours available on request for quantities of at least 500m²
- > With a maximum percentage of opening of up to 80mm/50%

Two-layer, highly tear-resistant façade membranes with a coloured, monolithic TPU coating for all curtain-type ventilated façades. Available in 3 standard colours and numerous special colours. **Ampatop® RF Color plus** is suitable for partially open and open façade surfacing in wood, expanded metal or perforated plate.

Monolithic TPU technology

Technical details			
s _d value			0,4m
Resistance to water penetration			W1
Weight			230g/m²
Fire behaviour			B-s1, d0
Outdoor weathering			3 months (before installation of façade cladding)
Resistant to UV-light			> 10 years
Tear-proof qualities	longitudinal		370N/5cm
	transverse		370N/5cm
Resistance against further tearing (nail shaft)	longitudinal		180N
	transverse		180N
Resistance to temperature			-40 to +80°C



5000-hour-test

Article number	Description	Roll dimensions	Content of pallets
7640442091612	Ampatop® RF Color plus white	1,5m × 50m = 75m²	24 rolls = 1800m²
7640442091414	Ampatop® RF Color plus black	1,5m × 50m = 75m²	24 rolls = 1800m²
7640442091636	Ampatop® RF Color plus red	1,5m × 50m = 75m²	24 rolls = 1800m²

Ampatop® A black

Non-combustible, diffusion-permeable black membrane for façades

NEW



- > Fire behaviour: A2-s1,d0
- > Non-combustible: no contribution to fire in the ventilation level (curtain wall)
- > Extremely high tensile strength: fall-resistant in accordance with DIN 4426
- > High temperature resistance: particularly suitable for ventilated façades on multi-storey buildings and behind energy-generating systems
- > UV-stable
- > For open façades with joint widths of up to 50 mm/50%
- > Outdoor weathering: 9 months

Non-combustible, diffusion-permeable black membrane for ventilated façades with open joints behind energy-generating systems (PV, solar) and as a fall-resistant roofing membrane.

Technical details			
S _d value			0,06m
Resistance to water penetration			W1
Weight			220g/m²
Fire behaviour			A2-s1, d0
Natural weathering period			9 months (before installation of the façade lining)
Minimum roof slope			10°
Tensile strength	longitudinal		2900N/5cm 2150N/5cm
	transverse		
Resistance to further tearing	longitudinal		150N 160N
	transverse		
Temperature resistance			-35 bis +120°C



5000-hour-test



Video

Item no.	Product name	Roll size	Pallet contents
7640442092107	Ampatop® A black	1,4m × 50m = 70m²	36 rolls = 2520m²

Ampatop® A silver plus

Non-combustible, diffusion-permeable reflective membrane for façades

NEW



Non-combustible, diffusion-permeable reflective membrane for ventilated, closed façades or façades with open joints behind energy-generating systems (PV, solar), and as a fall-resistant roofing membrane.

Technical details

S _d value		0,08m
Resistance to water penetration		W1
Weight		430g/m²
Fire behaviour		A2-s1, d0
Natural weathering period		9 months
Minimum roof slope		10°
Tensile strength	longitudinal transverse	3000N/5cm 3200N/5cm
Resistance to further tearing	longitudinal transverse	580N 450N
Temperature resistance		-35 bis +90°C
Emissivity		2%
Reflectivity		98%



CE
13859-1
13859-2

**5000-
hour-test**

- > Fire behaviour: A2-s1, d0
- > Non-combustible: no contribution to fire in the ventilation level (curtain wall)
- > Extremely high tensile strength: fall-resistant in accordance with DIN 4426
- > UV-stable
- > For open façades with joint widths of up to 50mm/50%
- > Surface made of micro-perforated aluminium foil: diffusion-permeable, reflects heat and electromagnetic radiation
- > Particularly suitable for ventilated façades on multi-storey buildings and behind energy-generating systems

Item no.	Product name	Roll size	Pallet contents
7640442092121	Ampatop® A silver plus with integrated tape	1,2m × 35m = 42m ²	24 rolls = 1008m ²

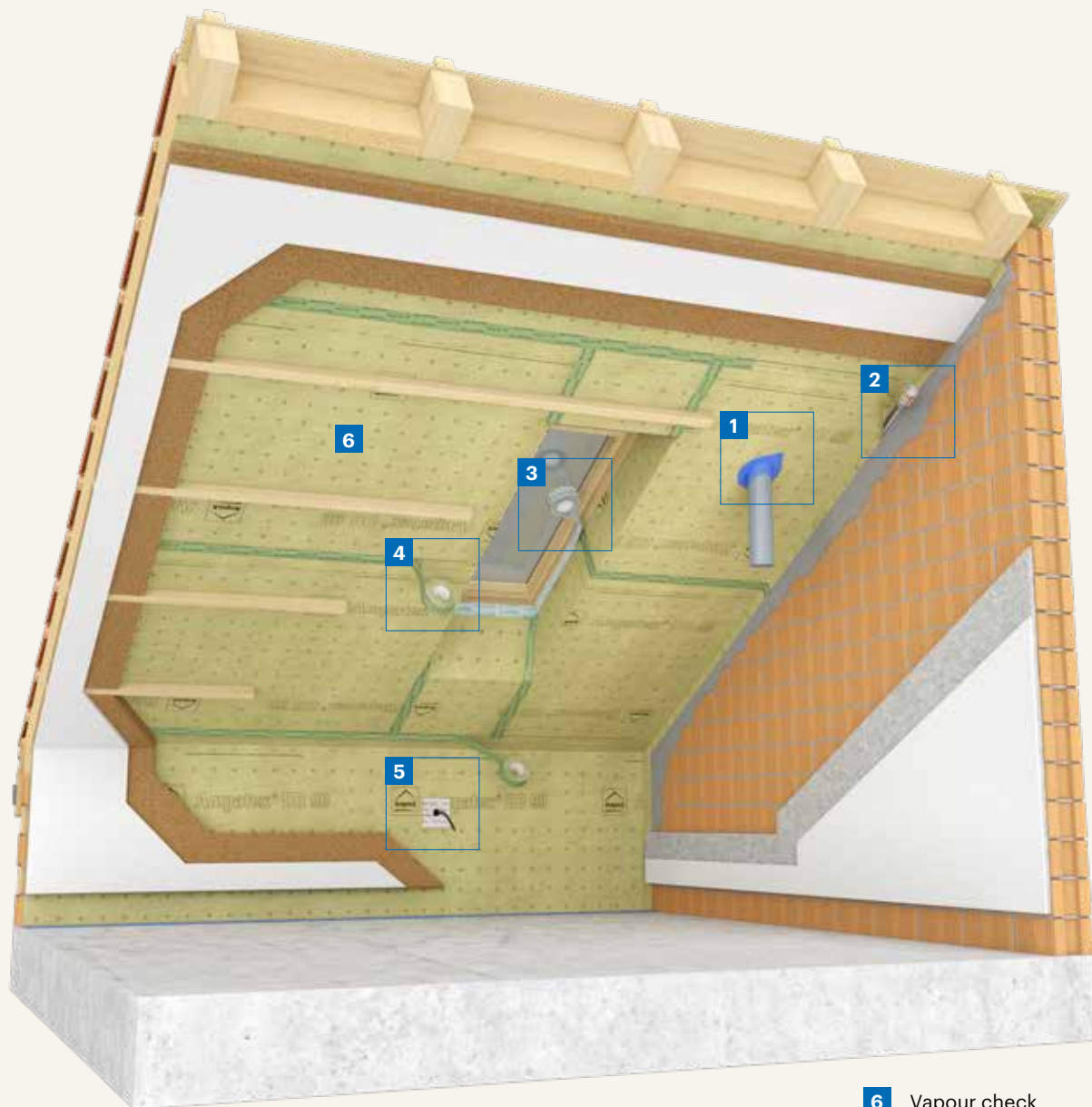


«Even the best thermal insulation is only partially functional without a good wall membrane.»

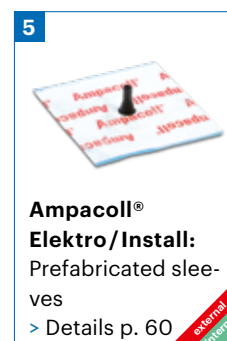
[Adrian Schwarz](#)
Junior Sales Manager Export

Vapour checks

Ampatex® and Sisalex®



6 Vapour check



Ampatex® DB 90

Vapour check



- > 20m s_d value: Suitable for most verification-free constructions
- > High anti-tear values: Ideal for blow-in insulation
- > Dimensionally stable, does not stretch or shrink: No tension in the airtight layer
- > 100% recyclable
- > Translucent: Construction below and markings remain visible

Double layer, tear-resistant vapour check and airtight layer made of thermoset continuous fibres with PP fill layer (100% polypropylene). The membrane is made of high-quality PP and contains no plasticisers. The standard moisture barrier for all roof and wall construction. Also suitable for cellulose insulation.

Technical details

s _d value		20m
Weight		90g/m ²
Fire behaviour		E
Tear resistance	longitudinal	160N/5cm
	transverse	160N/5cm
Resistance to further tearing (nail shaft)	longitudinal	200N
	transverse	200N
Airtightness		airtight



Vapour checks

Article number	Description	Roll dimensions	Content of pallets
7640115535092	Ampatex® DB 90	1,5m × 50m = 75m ²	40 rolls = 3000m ²
7640115530783	Ampatex® DB 90	1,5m × 100m = 150m ²	28 rolls = 4200m ²
7640115533630	Ampatex® DB 90 with 120m of Ampacoll® INT	1,5m × 100m = 150m ²	28 rolls = 4200m ²
7640115535917	Ampatex® DB 90 short roll with 30m of Ampacoll® INT	1,5m × 25m = 37,5m ²	60 rolls = 2250m ²
7640115535443	Ampatex® DB 90	3,0m × 50m = 150m ²	40 rolls = 6000m ²
7640115535894	Ampatex® DB 90 with 60m of Ampacoll® INT	3,0m × 50m = 150m ²	40 rolls = 6000m ²

Ampatex® DB 90

Purlin Connection Strip

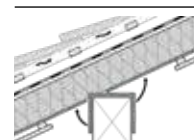


- > Ideal for prefabrication in the workshop
- > Easier connection at high roof pitches
- > Protects central and ridge purlins against weather

75cm-wide strip of **Ampatex® DB 90** vapour check, two-layer. Ideal as a purlin connection strip. Also suitable for beam connections and assembly transitions.

Technical details

s _d value		20m
Weight		90g/m ²
Fire behaviour		E
Tear resistance	longitudinal	160N/5cm
	transverse	160N/5cm
Resistance to further tearing (nail shaft)	longitudinal	200N
	transverse	200N
Airtightness		airtight



Article number	Description	Roll dimensions	Sales unit
7640115535269	Ampatex® DB 90 purlin connection strip	75cm × 100m	1 roll

Ampatex® Eco 5 extra

Sustainable vapour check and airtight layer, lattice-reinforced

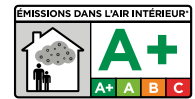


- > Lattice-reinforced: ideal for injection insulation
- > Soft material, easy to process
- > Easy to apply
- > ISCC-compliant: made with sustainable raw materials (62%) or PCR (Post-Consumer-Recycling)

Sustainable, lattice-reinforced, three-layer vapour check and airtight-layer. Suitable for roofs, walls, floors and ceilings for constructions that are diffusion-permeable externally. Ideal for blow-in insulation thanks to high tear values.

Technische Daten

s _d value	5,0 m
Weight	107g/m ²
Fire behaviour	E
Tear resistance	longitudinal transverse
	210N/5cm 160N/5cm
Resistance to further tearing (nail shaft)	longitudinal transverse
	160N 180N
Airtightness	airtight



Article number	Description	Roll dimensions	Content of pallets
7640442091308	Ampatex® Eco 5 extra	1,5m × 50m = 75m ²	40 rolls = 3000m ²



«Our environment is important to us. That's why we are constantly developing more sustainable products for you.»

Magnus Vohn
Export Manager

Ampatex® Cento

Vapour check



- > High stability and tear strength
- > Does not stretch or shrink
- > Translucent – substructure remains visible
- > Does not contain plasticisers

Double layer vapour check and airtight layer with high s_d value for wood structures with impermeable layers on the outside, such as bonded thermal insulation façades in conjunction with moisture-tight insulation materials. Also suitable for internal insulation in older masonry structures. Also suitable for cellulose insulation. Fleece underlay made of polypropylene (PP) with a special membrane made of polyolefin.

Technical details

s _d value		100m
Weight		170g/m ²
Fire behaviour		E
Tear resistance	longitudinal	160N/5cm
	transverse	130N/5cm
Resistance to further tearing (nail shaft)	longitudinal	120N
	transverse	130N
Airtightness		airtight



Vapour checks

Article number	Description	Roll dimensions	Content of pallets
7640115534255	Ampatex® Cento	1,5m × 50m = 75m ²	32 rolls = 2400m ²
7640115534835	Ampatex® Cento with 60m Ampacoll® INT	1,5m × 50m = 75m ²	32 rolls = 2400m ²

Sisalex® 303

Vapour check



- > Eco-friendly product: all elements are of natural origin
- > Stable and tear-resistant grid out of glass fibres
- > Does not contain fungicides

Triple layer paper vapour check and airtight layer. Compound made of two kraft papers and a glass fibre inlay. Also suitable for cellulose insulation.

Technical details

s _d value		5m
Weight		180g/m ²
Fire behaviour		E
Tear resistance	longitudinal	850N/5cm
	transverse	800N/5cm
Resistance to further tearing (nail shaft)	longitudinal	75 N
	transverse	65 N
Airtightness		airtight



Article number	Description	Roll dimensions	Content of pallets
7640115530707	Sisalex® 303	1,5m × 50m = 75m ²	40 rolls = 3000m ²
7640115535726	Sisalex® 303	3,0m × 50m = 150m ²	30 rolls = 4500m ²

Ampatex® Variano 3

Moisture-variable vapour check



- > Adhesive-friendly surface: Adhesive tapes adhere very well
- > Printed cutting aid: Saves time
- > 2,45m s_d value at 70% air humidity: Ideal for winter shell construction
- > Ideal for the fully insulated flat roof in timber construction

Two-layer moisture-variable vapour check and airtight layer made of polyamide and polypropylene. Perfectly suited for flat roofs in timber construction; also for renovating pitched roofs with a dense outer skin. The membrane offers special protection when used on bare brickwork in winter.

Technical details

s _d value	0,8–60m
Weight	90g/m ²
Fire behaviour	E
Outdoor weathering	to cover immediately
Tear resistance	longitudinal 180N/5cm transverse 125N/5cm
Resistance to further tearing (nail shaft)	longitudinal 125N 110N transverse



Article number	Description	Roll dimensions	Content of pallets
7640115537041	Ampatex® Variano 3 with 60m Ampacoll® INT	1,5m × 50m = 75m ²	40 rolls = 3000m ²
7640115536815	Ampatex® Variano 3	1,5m × 50m = 75m ²	40 rolls = 3000m ²

Ampatex® Variano 3 extra

Moisture-variable vapour check, lattice-reinforced



- > High anti-tear values: Ideal for blow-in insulation
- > Adhesive-friendly surface: Adhesive tapes adhere very well
- > Printed cutting aid: Saves time
- > 2,45 m s_d value at 70% air humidity: Ideal for winter shell construction
- > Ideal for roof renovation from the outside thanks to high tensile strength and impact resistance
- > Ideal for the fully insulated flat roof in timber construction

Lattice-reinforced, three-layer moisture-variable vapour check and airtight-layer made of polyamide and polypropylene. Perfectly suited for flat roofs in timber construction; also for renovating pitched roofs with a dense outer skin. The membrane offers special protection when used on bare brickwork in winter. Ideal for injection insulation due to its high tear resistance.

Technical details

s _d value	0,8–60m
Weight	110g/m ²
Fire behaviour	E
Outdoor weathering	to cover immediately
Tear resistance	longitudinal 300N/5cm transverse 250N/5cm
Resistance to further tearing (nail shaft)	longitudinal 200N 220N transverse



Article number	Description	Roll dimensions	Content of pallets
7640442090578	Ampatex® Variano 3 extra with 60m Ampacoll® INT	1,5m × 50m = 75m ²	40 rolls = 3000m ²
7640442090431	Ampatex® Variano 3 extra	1,5m × 50m = 75m ²	40 rolls = 3000m ²

Ampatex® A primo plus

Non-combustible reflective vapour check

NEW



- > s_d value 50m: vapour check
- > Fire behaviour: A2-s1,d0
- > Non-combustible: no contribution to fire, low smoke development
- > Extremely high tensile strength: holds insulating material securely in place
- > Surface made of micro-perforated aluminium foil: reflects heat and electromagnetic radiation

Used as a vapour check, airtight membrane and electromagnetic shielding barrier on the warm side of the thermal insulation in roofs, walls, floors and ceilings in externally diffusion-permeable constructions. Ideal for blow-in thermal insulation, thanks to extremely high tear values.

Technical details

s _d value		50m
Weight		420g/m ²
Fire behaviour		A2-s1, d0
Tear resistance	longitudinal transverse	2750N/5cm 2280N/5cm
Resistance to further tearing (nail shaft)	longitudinal transverse	500N 500N
Emissivity		2%
Reflectivity		98%



Article number	Description	Roll dimensions	Content of pallets
7640442092145	Ampatex® A primo plus with integrated tape	1,2m × 35m = 42m ²	24 rolls = 1008m ²

Ampatex® Reflecto VCL

Vapour check



- > Reflective foiled membrane increases thermal performance of structure
- > Air-tight seal and vapour check membrane
- > Cutting and orientation aid

Triple layer reflective vapour control layer.

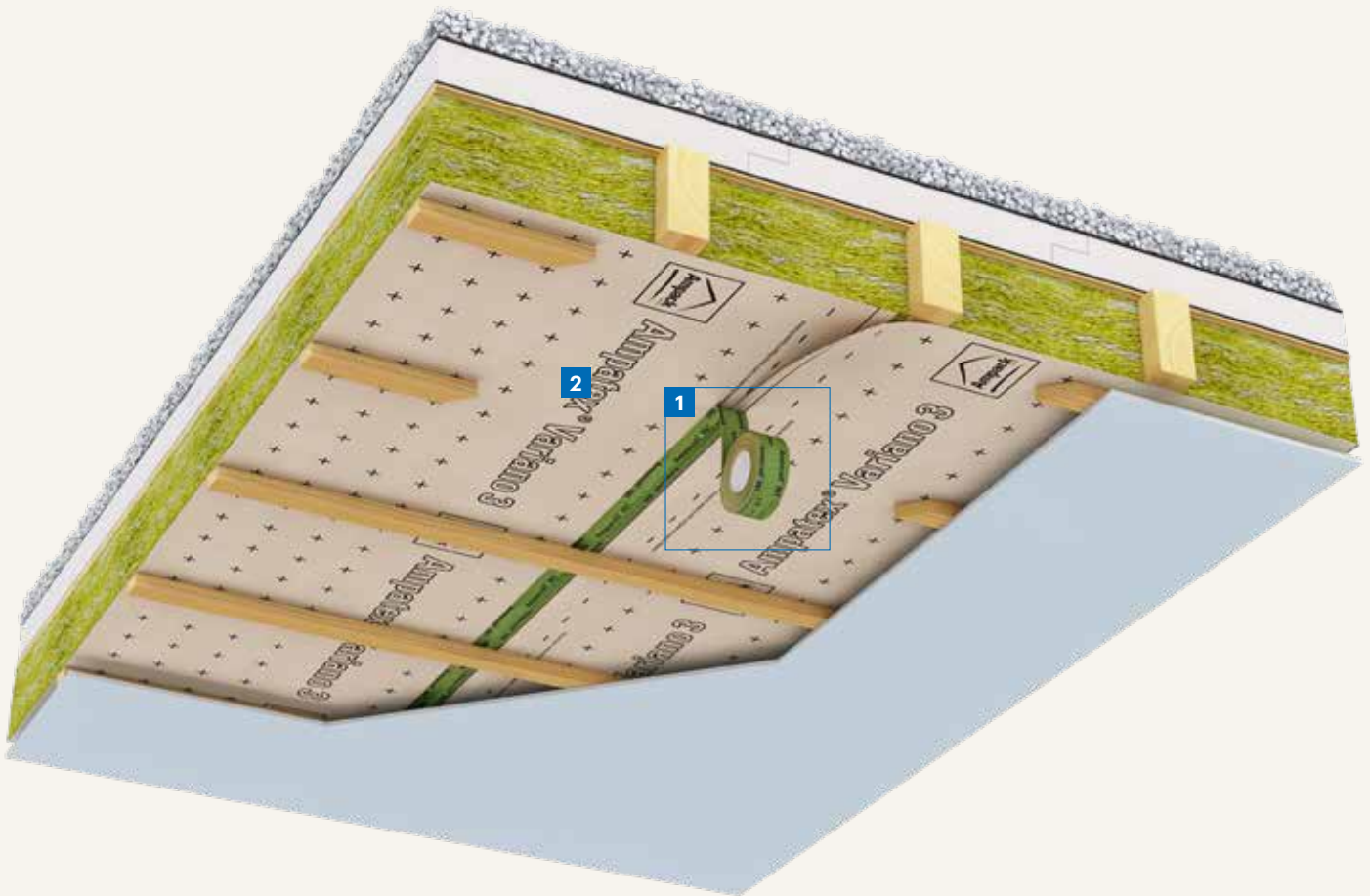
Technical details

s _d value		≥ 100m
Weight		140g/m ²
Fire behaviour		E
Outdoor weathering		to cover immediately
Tear resistance	longitudinal transverse	300N/5cm 250N/5cm
Resistance to further tearing (nail shaft)	longitudinal transverse	160N 160N
Temperature resistance		-40 to +80°C
Emissivity value		≤ 3



Article number	Description	Roll dimensions	Content of pallets
7640115537720	Ampatex Reflecto VCL	2,7m × 100m = 270m ²	15 rolls = 4050m ²
7640115537706	Ampatex Reflecto VCL	3,0m × 100m = 300m ²	15 rolls = 4500m ²

Vapour check for flat roofing in timber constructions



- 2** Moisture-variable vapour check



Ampatex® Variano 3

Moisture-variable vapour check



- > Adhesive-friendly surface: Adhesive tapes adhere very well
- > Printed cutting aid: Saves time
- > 2,45m s_d value at 70% air humidity: Ideal for winter shell construction
- > Ideal for the fully insulated flat roof in timber construction

Two-layer moisture-variable vapour check and airtight layer made of polyamide and polypropylene. Perfectly suited for flat roofs in timber construction; also for renovating pitched roofs with a dense outer skin. The membrane offers special protection when used on bare brickwork in winter.

Technical details

s _d value	0,8–60m
Weight	90g/m ²
Fire behaviour	E
Outdoor weathering	to cover immediately
Tear resistance	longitudinal 180N/5cm transverse 125N/5cm
Resistance to further tearing (nail shaft)	longitudinal 125N 110N transverse



Article number	Description	Roll dimensions	Content of pallets
7640115537041	Ampatex® Variano 3 with 60m Ampacoll® INT	1,5m × 50m = 75m ²	40 rolls = 3000m ²
7640115536815	Ampatex® Variano 3	1,5m × 50m = 75m ²	40 rolls = 3000m ²

Ampatex® Variano 3 extra

Moisture-variable vapour check, lattice-reinforced



- > High anti-tear values: Ideal for blow-in insulation
- > Adhesive-friendly surface: Adhesive tapes adhere very well
- > Printed cutting aid: Saves time
- > 2,45 m s_d value at 70% air humidity: Ideal for winter shell construction
- > Ideal for roof renovation from the outside thanks to high tensile strength and impact resistance
- > Ideal for the fully insulated flat roof in timber construction

Lattice-reinforced, three-layer moisture-variable vapour check and airtight-layer made of polyamide and polypropylene. Perfectly suited for flat roofs in timber construction; also for renovating pitched roofs with a dense outer skin. The membrane offers special protection when used on bare brickwork in winter. Ideal for injection insulation due to its high tear resistance.

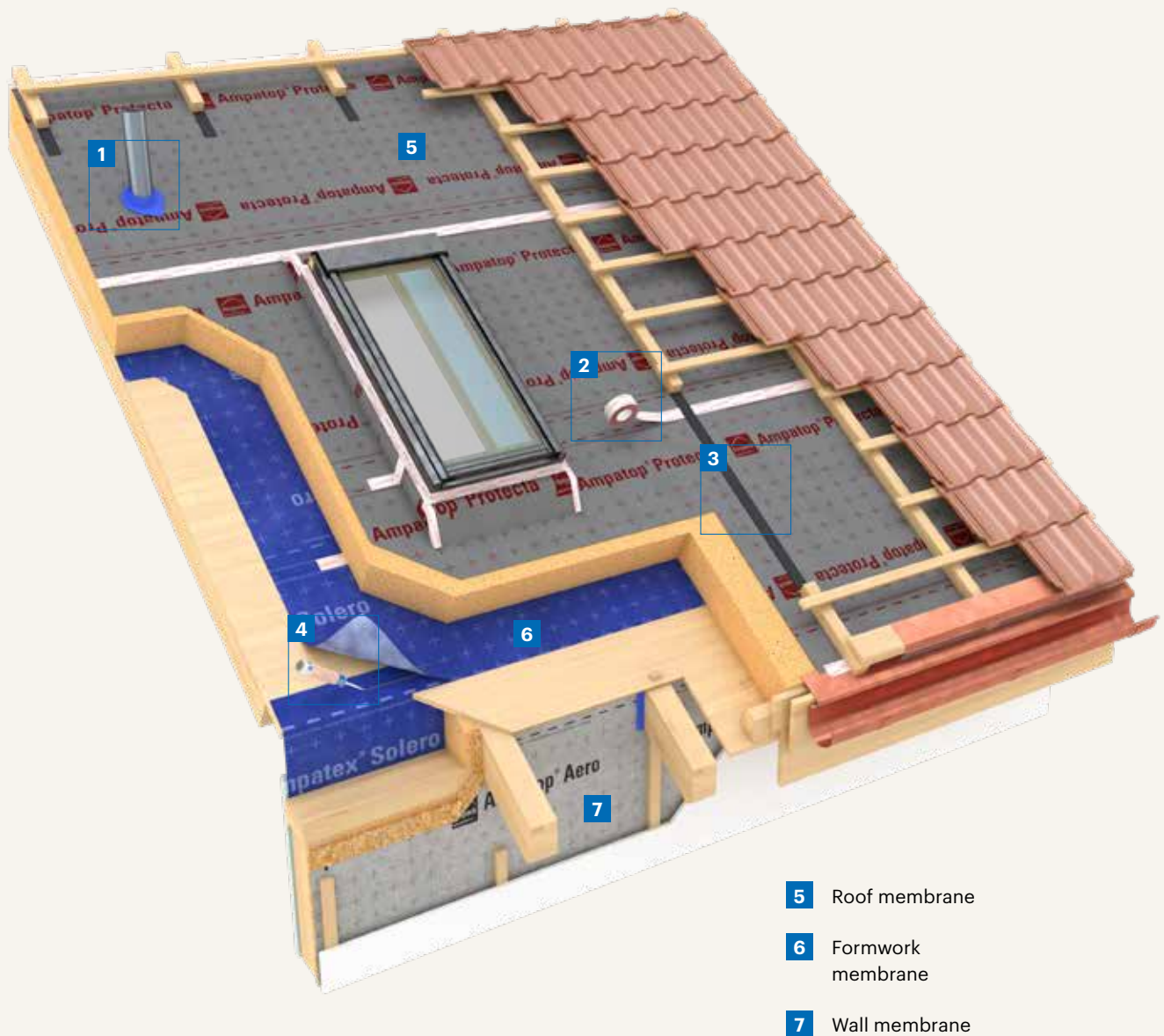
Technical details

s _d value	0,8–60m
Weight	110g/m ²
Fire behaviour	E
Outdoor weathering	to cover immediately
Tear resistance	longitudinal 300N/5cm transverse 250N/5cm
Resistance to further tearing (nail shaft)	longitudinal 200N 220N transverse



Article number	Description	Roll dimensions	Content of pallets
7640442090578	Ampatex® Variano 3 extra with 60m Ampacoll® INT	1,5m × 50m = 75m ²	40 rolls = 3000m ²
7640442090431	Ampatex® Variano 3 extra	1,5m × 50m = 75m ²	40 rolls = 3000m ²

Formwork membranes



Ampatex® Solero plus

Formwork membrane



- > Integrated tapes on both sides
- > Three months weather resistance
- > Dense, soft and easy to install

Triple layer weather-resistant vapour check, airtight layer and formwork membrane. Dense, soft, non-slip and weather-resistant. Ideal for rafter insulation.

Technical details

s_d value		5 m
Weight		145 g/m ²
Fire behaviour		E
Tear resistance	longitudinal	240N/5 cm
	transverse	180N/5 cm
Resistance to further tearing (nail shaft)	longitudinal	110N
	transverse	120N
Outdoor weathering		3 months
Airtightness		airtight
Watertightness		passed at 2kPa
Minimum roof slope		10°



Article number	Description	Roll dimensions	Content of pallets
7640115535214	Ampatex® Solero plus integrated tapes on both sides	1,5 m × 50 m = 75 m ²	28 Rolls = 2100 m ²

Ampatex® SB 130 (plus)

Formwork membrane



- > Ampatex® SB 130 plus: integrated tapes on both sides
- > Three months' weather resistance
- > Translucent – the substructure remains visible
- > Very robust and suitable for harsh site conditions

Double layer weather-resistant vapour check, airtight layer and formwork membrane made of thermoset continuous polypropylene fibres with PP filler (100% polypropylene). Weather-resistant. Ideal for rafter insulation.

Technical details

s_d value		40 m
Weight		135 g/m ²
Fire behaviour		E
Tear resistance	longitudinal	220N/5 cm
	transverse	220N/5 cm
Resistance to further tearing (nail shaft)	longitudinal	230N
	transverse	210N
Outdoor weathering		3 months
Airtightness		airtight
Watertightness		passed at 2kPa
Minimum roof slope		10° (5°–9° with additional measures)



Article number	Description	Roll dimensions	Content of pallets
7640442090790	Ampatex® SB 130 plus integrated tapes on both sides	1,5 m × 50 m = 75 m ²	40 rolls = 3000 m ²
7640115535382	Ampatex® SB 130	3,0 m × 50 m = 150 m ²	40 rolls = 6000 m ²

Self-adhesive vapour check and weather protection



3 Ampatex® Ombrello
Self-adhesive vapour check and weather protection



Ampatex® Ombrello

Self-adhesive vapour check and weather protection



- > Transparent: furring, chalklines, penetrations, etc. remain visible
- > Adhesive made of UV acrylate: moisture does not affect the adhesive
- > Natural weathering period of 3 months: sufficient time for construction phase
- > Easy to install and non-slip: for faster work and safe walking during the construction phase

Transparent, full-surface adhesive vapour check and weather protection membrane. Used, for example, to temporarily cover wooden ceilings during the transport, assembly and construction phase or to ensure airtightness on wooden materials and other substrates.

Technical details

s _d value		5 m
Weight		160 g/m ²
Fire performance		E
Tear resistance	longitudinal	110 N/5 cm
	transverse	100 N/5 cm
Resistance to further tearing (nail shaft)	longitudinal	80 N
	transverse	80 N
Outdoor weathering		3 months (safe/permanent drainage, protection against mechanical damage)
Width of overlap		≥ 10 cm
Temperature resistance		-40 to +80 °C



Formwork membranes

Article number	Description	Roll dimensions	Content of pallets
7640442091384	Ampatex® Ombrello	1,5 m × 50 m = 75 m ² Liner division: 25 cm, 125 cm	28 rolls = 2100 m ²
7640442091599	Ampatex® Ombrello	375 mm x 50 m = 18,75 m ²	112 rolls = 5600 m
7640442091575	Ampatex® Ombrello	750 mm x 50 m = 37,50 m ²	56 rolls = 2800 m



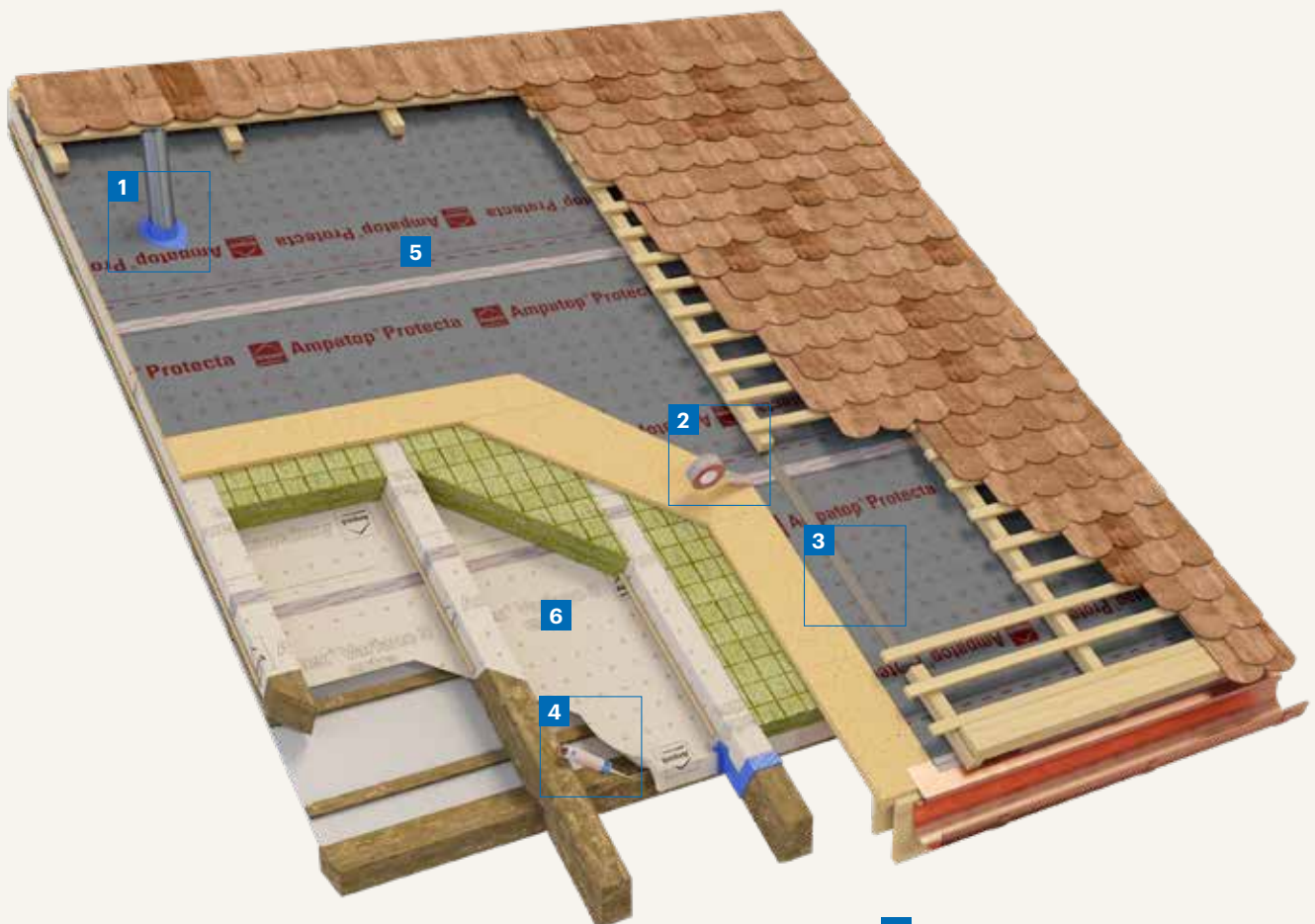
«Protect your wooden ceiling during transportation and construction. **Ampatex® Ombrello** impresses in several ways. Its transparency makes it easier to install, yet the construction is still very robust: several coatings and a UV acrylate adhesive ensure that no one but the craftsman is left out in the rain.»

Adrian Schwarz
Junior Sales Manager Export

Vapour checks for renovation

Roof renovation

Roof renovation from outside with removal of existing insulation



5 Roof membrane

6 Moisture-variable vapour check



Ampatex® Variano 3 extra

Moisture-variable vapour check, lattice-reinforced



Lattice-reinforced, three-layer moisture-variable vapour check and airtight-layer made of polyamide and polypropylene. Perfectly suited for flat roofs in timber construction; also for renovating pitched roofs with a dense outer skin. The membrane offers special protection when used on bare brickwork in winter. Ideal for injection insulation due to its high tear resistance.

Technical details

s _d value	0,8–60 m
Weight	110 g/m ²
Fire behaviour	E
Outdoor weathering	to cover immediately
Tear resistance	longitudinal 300 N/5 cm transverse 250 N/5 cm
Resistance to further tearing (nail shaft)	longitudinal 200 N 220 N transverse

- > High anti-tear values: Ideal for blow-in insulation
- > Adhesive-friendly surface: Adhesive tapes adhere very well
- > Printed cutting aid: Saves time
- > 2,45 m s_d value at 70 % air humidity: Ideal for winter shell construction
- > Ideal for roof renovation from the outside thanks to high tensile strength and impact resistance
- > Ideal for the fully insulated flat roof in timber construction

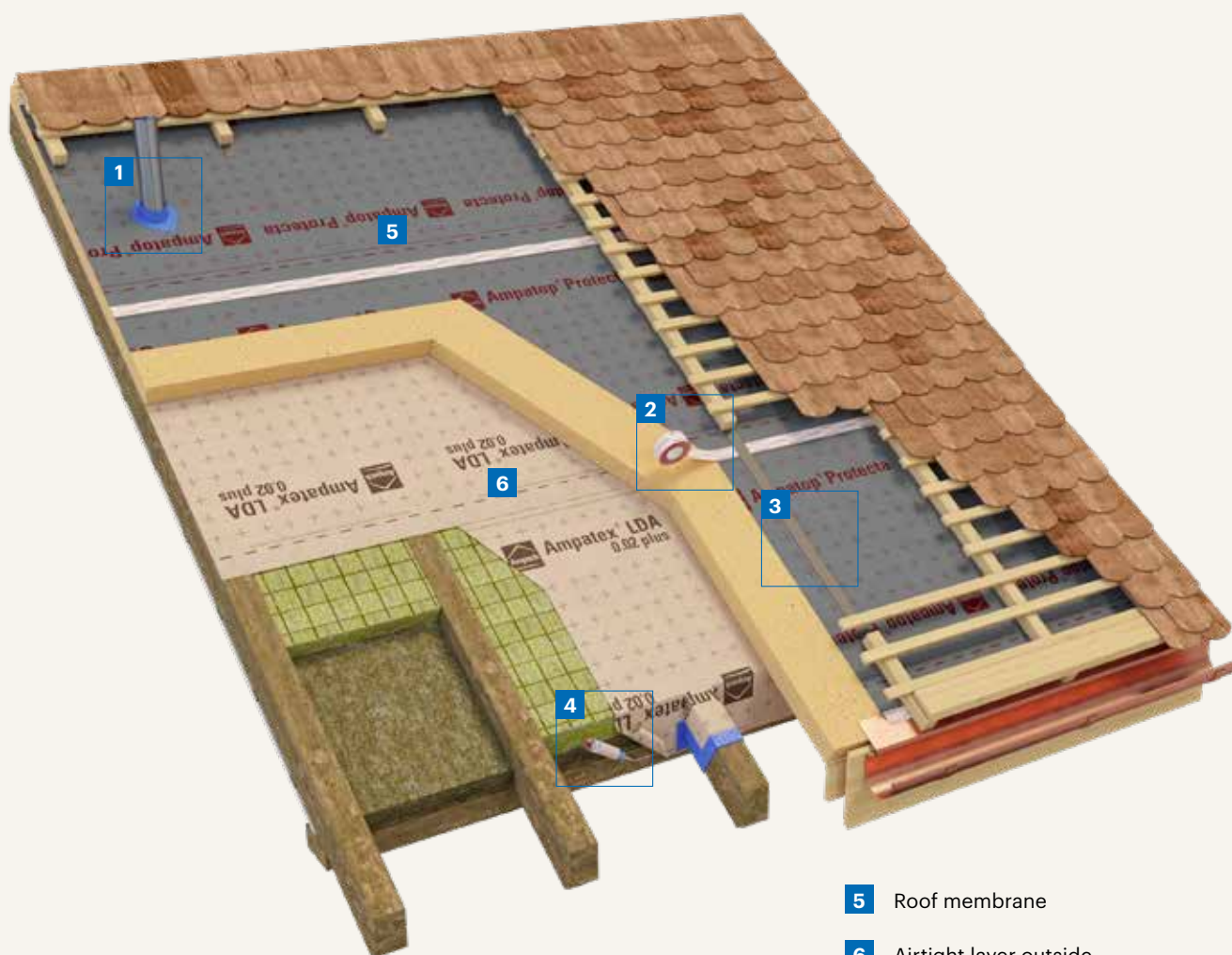


Article number	Description	Roll dimensions	Content of pallets
7640442090578	Ampatex® Variano 3 extra with 60m Ampacoll® INT	1,5m × 50m = 75m ²	40 rolls = 3000m ²
7640442090431	Ampatex® Variano 3 extra	1,5m × 50m = 75m ²	40 rolls = 3000m ²

Vapour checks for renovation

Roof renovation

Roof renovation from the outside without removal of existing insulation



- 5** Roof membrane
- 6** Airtight layer outside



Ampatex® LDA 0.02 plus

Vapour check for renovation



- > Integrated tape on both side
- > Saves time during installation
- > Cutting and orientation aid
- > Does not tear or snag on nails

Highly permeable airtight three-layer membrane for roof renovation over the support structure. This membrane is highly permeable (s_d value 0,025 m) yet airtight (a value: 0,004).

Technical details

s_d value	0,025 m
a value	0,004 m ³ / (h × m ²)
Weight	190 g/m ²
Fire behaviour	E
Tear resistance	longitudinal 375 N/5 cm transverse 305 N/5 cm
Resistance to further tearing (nail shaft)	longitudinal 250 N transverse 300 N
Outdoor weathering	2 weeks (with mechanical fixation)
Resistance to water penetration	W1



Article number	Description	Roll dimensions	Content of pallets
7640115535603	Ampatex® LDA 0.02 plus integrated tapes on both sides	1,5m × 50m = 75 m ²	24 rolls = 1800 m ²



«It is particularly difficult to insert an airtight layer during a renovation. Ask us – we will help you.»

Magnus Vohn
Export Manager

Vapour and emission barriers

Sisalex® 514

Vapour and electrical smog barrier

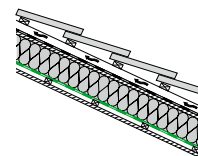


- > Reinforced robust vapour barrier
- > High s_d value, more than 1500 m = absolutely airtight

Four-layer vapour and electrical smog barrier made of two craft papers with a flame-retardant paraffin middle layer and glass fibre inlay. Aluminium backing on one side. Also suitable for cellulose insulation.

Technical details

s_d value		> 1500 m
Weight		225 g/m ²
Fire behaviour		E
Tear resistance	longitudinal	950 N/5 cm
	transverse	450 N/5 cm
Resistance to further tearing (nail shaft)	longitudinal	50 N
	transverse	80 N
Airtightness		airtight



Article number	Description	Roll dimensions	Content of pallets
7640115530967	Sisalex® 514	1,5 m × 50 m = 75 m ²	40 rolls = 3000 m ²

Sisalex® 518

Vapour and moisture barrier

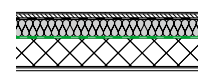


- > High s_d value, more than 1500 m = absolutely airtight
- > Moisture-resistant, well-suited for e.g. swimming pools
- > PE backing makes the membrane alkali-resistant
- > Increased resistance to tears by nails
- > Can be laid directly on cement-based building materials

Four-layer barrier against damp and moisture consisting of an aluminium and PE layer and a reinforcement consisting of heat-treated continuous filaments with a PP filling layer (100% polypropylene). Suitable for exhaust insulation.

Technical details

s_d value		> 1500 m
Weight		175 g/m ²
Fire behaviour		E
Tear resistance	longitudinal	180 N/5 cm
	transverse	160 N/5 cm
Resistance to further tearing (nail shaft)	longitudinal	180 N
	transverse	180 N
Airtightness		airtight



Article number	Description	Roll dimensions	Content of pallets
7640115536457	Sisalex® 518	1,5 m × 50 m = 75 m ²	40 rolls = 3000 m ²

Sisalex® 871

Radon barrier



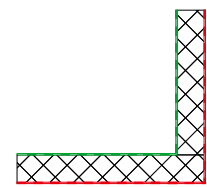
- > Membrane, bonded overlap and penetrations tested for radon tightness
- > Protection against radon gas, methane and humidity
- > Extremely stable and tear-resistant
- > Alkali-resistant
- > Also tested as a sill membrane
- > Also tested as a rising damp seal on floor slabs

Four-layer radon barrier consisting of two layers of PE film, a polyester fibre inlay and a 0,008 mm thick aluminium layer.

Technical details

s_d value	> 1500m
Weight	350g/m ²
Fire behaviour	E
Tear resistance	longitudinal 360 N/5 cm transverse 375 N/5 cm
Resistance to further tearing	longitudinal > 280 N transverse > 280 N
Permeability to methane	$4,3 \times 10^{-14}$ kg m/s
Radon diffusion coefficient	$1,4 \times 10^{-13}$ m ² /s

Radon-proof bonding by means of two strips of **Ampacoll® BK 530**, 20mm, mechanical security of the overlap with **Ampacoll® XT**. Seal penetrations with **Ampacol® Radon**.



Externally tested

Article number	Description	Roll dimensions	Content of pallets
7640115531001	Sisalex® 871	2,0m × 50m = 100m ²	25 rolls = 2500m ²

Sisalex® 30

Trickle protection

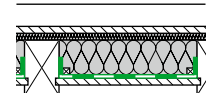


- > Resists ageing very well
- > Dust-proof

Single layer craft paper as trickle protection on closed, level intermediate floors, sliding floors, etc. Not applicable for use with sharp-edged bulk materials!

Technical details

s_d value	0,04m
Weight	80g/m ²
Fire behaviour	E



Article number	Description	Roll dimensions	Content of pallets
7640115530660	Sisalex® 30	1,25m × 50m = 62,5m ²	85 rolls = 5312,5m ²

Vapour and
emission barriers

Ampacoll®

System adhesive technology



Ampacoll® ND Duo

> For details, see p. 46



Ampacoll® ND.Band

> For details, see p. 46



Ampacoll® ND

> For details, see p. 46



Ampacoll® Superfix

> For details, see p. 47



Ampacoll® RA

> For details, see p. 47



Ampacoll® Profix

> For details, see p. 48



Ampacoll® XT 60

> For details, see p. 49



Ampacoll® XT 75

> For details, see p. 49



Ampacoll® XT 100

> For details, see p. 49



Ampacoll® XT 150

> For details, see p. 49



Ampacoll® XT 200

> For details, see p. 49



Ampacoll® XT 250

> For details, see p. 49



Ampacoll® XT dsl

> For details, see p.50



Ampacoll® XT FO

> For details, see p.50



Ampacoll® Flexx pro

> For details, see p.51



Ampacoll® Reflecto Tape

> For details, see p.52



Ampacoll® UV

> For details, see p.52



Ampacoll® UV flexx

> For details, see p.52



Ampacoll® A Tape black

> For details, see p.53



Ampacoll® A Tape silver

> For details, see p.53



Ampacoll® INT

> For details, see p.54



Ampacoll® Easy

> For details, see p.54



Ampacoll® Easyfix

> For details, see p.54



Ampacoll® Fenax 40/60

> For details, see p.55/65

Ampacoll®

System adhesive technology



Ampacoll® BK 530, 15 mm

> For details, see p.55



Ampacoll® BK 530, 20 mm

> For details, see p.55



Ampacoll® BK 535, KR

> For details, see p.56



Ampacoll® BK 535, 50 mm

> For details, see p.56



Ampacoll® BK 535, 80 mm

> For details, see p.56



Ampacoll® BK 535, 120 mm

> For details, see p.56



Ampacoll® RS, 4 mm

> For details, see p.57



Ampacoll® RS, 6 mm

> For details, see p.57



Ampacoll® RS, 10 mm

> For details, see p.57



Ampacoll® DT

> For details, see p.58



Ampacoll® DoubleSeal

> For details, see p.58



Ampacoll® Cornerfix

> For details, see p.58



Ampacoll® Primax

> For details, see p.59



Ampacoll® Airmax

> For details, see p.59



Ampacoll® Elektro/Install

> For details, see p.60



Ampacoll® Radon

> For details, see p.62



Ampacoll® Fenax

> For details, see p.65



Ampacoll® Fenax DS

> For details, see p.66



Ampacoll® Fenax FO

> For details, see p.67



Ampacoll® Komprimax M/K

> For details, see p.68/69



Ampacoll® Sillskin black

> For details, see p.70



Ampacoll® FE

> For details, see p.70



Ampacoll® Maxiflex

> For details, see p.71

Ampacoll® ND Duo Nail sealing tape



Double-sided adhesive nail sealing tape for roof and formwork membranes. Prevents moisture from getting into the construction. Particularly well-suited to prefabrication situations.

- > Double-sided adhesive for easy pre-assembly, fast fitting on the roof and a secure, permanent seal
- > Seal tightness certified by Holzforschung Austria (HFA)!
- > Closed-cell foam – absorbs no water

Technical details

Storage conditions	cool and dry
Temperature resistance	– 25 to + 75 °C
Outdoor weathering	3 months
Durability	> 20 years



Article number	Roll dimensions	Carton content	Content of pallets
7640115533951	30 m × 60 mm × 3 mm	8 rolls = 240 m	18 cartons

Ampacoll® ND.Band Nail sealing tape



Single-sided adhesive nail sealing tape for roof and formwork membranes. Prevents moisture from getting into the construction.

- > Seal tightness certified by Holzforschung Austria (HFA)!
- > No paper liner – no waste
- > Closed-cell foam – absorbs no water
- > For over 10 years successfully in use

Technical details

Storage conditions	cool and dry
Temperature resistance	– 30 to + 80 °C
Outdoor weathering	3 months
Durability	> 20 years



Article number	Roll dimensions	Carton content	Content of pallets
7640115530202	30 m × 60 mm × 3 mm	8 rolls = 240 m	18 cartons
7640115536389	30 m × 80 mm × 3 mm	6 rolls = 180 m	18 cartons

Ampacoll® ND Nail seals



Adhesive nail seals for roof and formwork membranes. Prevents moisture from getting into the construction.

- > Seal tightness certified by Holzforschung Austria (HFA)!
- > No paper liner – no waste
- > Closed-cell foam – absorbs no water

Technical details

Storage conditions	cool and dry
Temperature resistance	– 25 to + 75 °C
Outdoor weathering	3 months
Durability	> 20 years



Article number	Roll dimensions	Carton content	Content of pallets
7640115530110	60 mm × 40 mm × 5 mm 500 pieces/roll	5 rolls = 100 m	30 cartons
7640115536228	80 mm × 60 mm × 5 mm 300 pieces/roll	4 rolls = 72 m	30 cartons

Ampacoll® Superfix

Liquid adhesive



Liquid adhesive based on synthetic rubber, used to bond overlaps and edge connections of roof membranes and weather-resistant vapour checks. Can also be used at extremely low temperatures.

- > Can even be used to bond wet materials
- > Workable to -20°C
- > Primer not necessary
- > Adheres to most surfaces
- > Always easy to squeeze out
- > Notched nozzle for a more even bead

Technical details

Base material	Styrene-butadiene rubber
Storage conditions	cool and dry
Working temperature range	-20 to +50°C
Temperature resistance	-40 to +80°C
Durability	> 20 Years
Setting time	30 bis 60 minutes
Outdoor weathering	many Years
Solvent	Toluene
Consumption	30-50ml/m



Article number	Content	Carton content	Content of pallets
7640115530028	310ml/cartridge	12 cartridges	150 cartons
7640115530059	600ml/tube	10 tubes	60 cartons

Ampacoll® RA

Liquid adhesive



Solvent-free, airtight and durable elastic edge connection adhesive. Perfect for use with vapour checks and barriers.

- > Odourless – no solvent
- > Primer not necessary
- > Adheres to most surfaces
- > Always easy to squeeze out
- > Notched nozzle for a more even bead

Technical details

Base material	Acrylate copolymer
Storage conditions	frost-free, cool and dry
Working temperature range	0 to +50°C
Temperature resistance	-20 to +80°C
Durability	> 20 years
Setting time	2 to 3 days
Solvent	none
Consumption	30-50ml/m



Article number	Content	Carton content	Content of pallets
7640115530141	310ml/cartridge	12 cartridges	125 cartons
7640115530172	600ml/tube	10 tubes	60 cartons

Ampacoll® Profix

Liquid adhesive

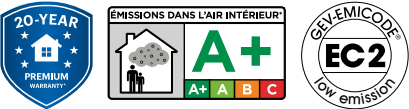


Solvent-free, airtight, windtight, durable elastic liquid adhesive. Ideally suited for bonding TPU sheeting, connecting a membrane to the eaves flashing, lining overlaps on wind seals, and mounting wind seals on metal sections.

- > Permanently elastic and tacky
- > Ideal for TPU products
- > Resistance against condensation and run-off water
- > No primer necessary
- > Repositionable
- > Notched nozzle for a more even bead



Technical details	
Storage	frost-free, cool and dry
Working temperature	+5 to +35°C
Temperature resistance	– 40 to +90 °C
Ageing resistance	> 20 years
Setting time	Two to three days
Solvents	solvent-free
Consumption	30–50ml/m



Article number	Contents	Box contents	Pallet contents
7640442090417	290ml/cartridge	12 cartridges	130 boxes

Ampacoll® XT

Acrylic adhesive tape



Tear-resistant adhesive tape system **in six widths**. The universal adhesive tape for internal and external use with a genuine long-term history. This tape is specially optimised for outdoor application.

- > Tyvek carrier: Does not rot, tearproof, waterproof, does not absorb water
- > Six different widths: The right solution for every challenge
- > Can be torn by hand: No knife necessary
- > Can be processed from -5°C , so it can also be used in winter
- > Used successfully and relied on by our customers since 1995

Technical details

Storage conditions	cool and dry
Working temperature range	above -5°C
Temperature resistance	-40 to $+100^{\circ}\text{C}$
Durability	> 20 years
Outdoor weathering	4 months (without mechanical stress)



Ampacoll® XT 60

Universal adhesive tape, used to tape overlaps in roof and façade membranes or panels – optimised for external use.



Ampacoll® XT 75

Universal adhesive tape, used to tape face and corner joints in wood-based panels. Ideal for bridging over small gaps between components.



Ampacoll® XT 100 single slit

Universal adhesive tape, used to tape overlaps between components. Ideal for bridging over large gaps between components.



Ampacoll® XT 150 single slit

Universal adhesive tape, used to tape panels at ridges, edges and channels.



Ampacoll® XT 200 single slit

For an air and wind tight-taping of injection holes, sills and damaged spots indoor and outdoor.



Ampacoll® XT 250 single slit

For air and wind tight sealing of wide components and reveals. Also suitable as sub-sills in timber-frame construction.

Article number	Description	Roll dimensions	Carton content	Content of pallets
7640115531728	Ampacoll® XT 60	25 m × 60 mm × 0,3mm	10 rolls = 250m	42 cartons
7640115531759	Ampacoll® XT 75	25 m × 75 mm × 0,3mm	6 rolls = 150m	84 cartons
7640442091025	Ampacoll® XT 100, single slit	25 m × 100 mm × 0,3mm Slit: 50mm	6 rolls = 150m	70 cartons
7640115531810	Ampacoll® XT 150, single slit	25 m × 150 mm × 0,3mm Slit: 75mm	4 rolls = 100m	70 cartons
7640115535245	Ampacoll® XT 200, single slit	25 m × 200 mm × 0,3mm Slit: 100mm	2 rolls = 50m	84 cartons
7640115535948	Ampacoll® XT 250, single slit	25 m × 250 mm × 0,3mm Slit: 125mm	2 rolls = 50m	42 cartons

Ampacoll® XT

Acrylic adhesive tape, double-slit



For air and wind-proof taping of rafters and corner connections and for external window bonds.

- > Tyvek carrier: Does not rot, tearproof, waterproof, does not absorb water
- > Can be torn by hand: No knife necessary
- > Can be processed from -5°C, so it can also be used in winter
- > Used successfully and relied on by our customers since 1995

Technical details

Storage conditions	cool and dry
Working temperature	ab -5°C
Temperature resistance	-40 to +100°C
Durability	> 20 years
Outdoor weathering	4 months (without mechanical stress)



Article number	Description	Roll dimensions	Carton content	Content of pallets
7640115533807	Ampacoll® XT 60	25 m × 60 mm × 0,3 mm Slit: 12 mm, 30 mm	10 rolls = 250 m	70 cartons
7640115535979	Ampacoll® XT 100	25 m × 100 mm × 0,3 mm Slit: 12 mm, 50 mm	4 rolls = 100 m	42 cartons
7640115536006	Ampacoll® XT 150	25 m × 150 mm × 0,3 mm Slit: 12 mm, 75 mm	4 rolls = 100 m	42 cartons

Ampacoll® XT FO

Acrylic adhesive tape, pre-folded



Tear-resistant adhesive tape system in two pre-folded versions on the roll. For airtight and windproof taping, for example of rafter and corner connections or window bonding in outdoor areas. The universal adhesive tape for internal and external use with a genuine long-term history. This tape is specially optimised for outdoor application.

- > Pre-folded
- > Diffusion-permeable carriers
- > Keeps its shape thanks to tear-resistant carrier
- > Maximum adhesive power at temperatures from as low as -5°C
- > Extremely robust and durable
- > Tyvek®-carrier is watertight and will not rot

Technische Daten

Storage	cool and dry
Working temperature	from -5°C
Temperature resistance	-40 bis +100°C
Ageing resistance	> 20 years
Outdoor weathering	4 months (without mechanical stress)



Article number	Description	Roll dimensions	Carton content	Content of pallets
7640442092039	Ampacoll® XT 12/48 FO	25 m × 60 mm pre-folded 12 mm	4 rolls = 100 m	144 cartons
7640442092008	Ampacoll® XT 30/30 FO	25 m × 60 mm pre-folded 30 mm	6 rolls = 150 m	144 cartons

Ampacoll® Flexx pro

Flexible acrylic adhesive tape



Tearproof yet flexible system adhesive tape for internal and external use. Ideal for airtight and windtight lining of component joints and masking boards on ridges, hips and grooves.

- > Optimum crosswise flexibility
- > Serrated - easy to tear off by hand
- > Soft and adaptable; absorbs component movements



Technical details	
Storage	cool and dry
Working temperature	from -5°C
Temperature resistance	-40 to +100°C
Ageing resistance	> 20 years
Natural weathering period	4 months (without mechanical stress)

Article number	Roll size	Box contents	Pallet contents
7640442090998	40 m × 60 mm	10 rolls = 400m	48 cartons
7640442090622	25 m × 100 mm Slit: 50 mm, 50 mm	6 rolls = 150m	70 cartons
7640442090653	25 m × 150 mm Slit: 75 mm, 75 mm	4 rolls = 100m	70 cartons

Ampacoll® Reflecto Tape Acrylic adhesive tape



Reflective tape for use with Ampatop Reflecto WS and Ampatex Reflecto VCL

- > For internal and external use
- > System accessories for Ampatop Reflecto WS and Ampatex Reflecto VCL
- > Serrated – easy to tear off by hand

Technical details

Storage conditions	cool and dry
Working temperature	from 0°C
Temperature resistance	– 20 to + 80°C
Durability	> 20 years
Outdoor weathering	3 months (without mechanical stress)



Article number	Roll size	Carton content	Content of pallets
7640115537874	50 m × 60 mm	10 rolls = 500 m	49 cartons

Ampacoll® UV Acrylic adhesive tape



Single-sided adhesive tape with applied solvent-free, modified acrylate adhesive and diagonal inlay. Pull-off liner made of silicon paper. Optimum solution for taping **Ampatop® F black plus** and **Ampatop® RF black**.

- > Withstands UV
- > Moisture-resistant, for outdoor use
- > Dimensionally stable
- > Completely black – no overprint

Technical details

Storage conditions	cool and dry
Working temperature range	above –5°C
Temperature resistance	–40 to + 80°C
Durability	> 20 years
Outdoor weathering	3 months (before installation of façade cladding)
UV-stability	> 10 years



Article number	Roll dimensions	Carton content	Content of pallets
7640115533586	25 m × 60 mm × 0,33 mm	10 rolls = 250 m	48 cartons

Ampacoll® UV flexx UV-stable, expandable adhesive tape



UV-stable, tear-resistant but at the same time expandable adhesive tape. Ideal for windtight bonding of **Ampatop® F black plus** and **Ampatop® RF black**.

- > UV-stable
- > Optimum crosswise expandability
- > Moisture resistant, for outdoor use
- > Soft and adaptable, absorbs component movements
- > Completely black, no imprint

Technical details

Storage conditions	cool and dry
Working temperature range	ab –5°C
Temperature resistance	–40 to + 100°C
Durability	> 20 years
Outdoor weathering	3 months (prior installation of façade surfacing)
UV-stability	> 10 years



Article number	Roll dimensions	Carton content	Content of pallets
7640442091339	40 m × 60 mm	10 rolls = 400 m	48 cartons

Ampacoll® A Tape black Non-combustible adhesive tape



UV-stable, repositionable adhesive tape with a low-combustion-load special adhesive and glass-fibre mesh. Removable silicon paper liner. System adhesive tape for bonding the non-combustible, diffusion-permeable black membrane **Ampatop® A black** for ventilated façades and roofs.

- > Fire behaviour: A2-s1, d0
- > UV-stable
- > Moisture resistant, for exterior use
- > Glass-fibre-reinforced, dimensionally stable
- > Completely black – without overprinting
- > Easily repositionable

Technical details

Storage conditions	cool and dry
Working temperature	from 5 °C
Temperature resistance	–30 to +90 °C
Durability	> 20 years
Outdoor weathering	9 months (before installation of the façade surfacing)
UV stability	> 10 years



Article number	Roll size	Carton content	Content of pallets
7640442092176	25 m × 75 mm	6 rolls = 150m	80 cartons

Ampacoll® A Tape silver Non-combustible aluminium adhesive tape



Tearproof, fabric-reinforced adhesive tape with low-combustion-load special adhesive for interior and exterior use. Removable silicon paper liner. System adhesive tape for installing the non-combustible membranes **Ampatop® A silver plus** and **Ampatex® A primo plus**.

- > Fire behaviour: A2-s1, d0
- > UV-stable
- > Moisture resistant, for exterior use
- > Fabric-reinforced, dimensionally stable
- > Reflective surface made of aluminium foil
- > Hand-tearable

Technical details

Storage conditions	cool and dry
Working temperature	from 5 °C
Temperature resistance	–40 to +90 °C
Ageing resistance	> 20 years
Emissivity	2%
Reflectivity	98%
Outdoor weathering	9 months (before installation of the façade surfacing)



Article number	Roll size	Carton content	Content of pallets
7640442092206	25 m × 75 mm	6 rolls = 150m	96 cartons

Ampacoll® INT

Acrylic adhesive tape



Acrylic adhesive for airtight sealing of overlaps and/or edge connections on strips and panel construction materials, or for airtight taping of penetrations of any kind, in each case with smooth surfaces in internal work.

- > Multiple applications: For joints, overlaps and penetrations. Less storage
- > Serrated: Can be torn by hand, no knife necessary. Reduces the amount of adhesive wasted at edges
- > Flexible: Tape is flexible enough to compensate material and component movements
- > Smooth, hand-friendly surface, tape can be rubbed on very well

Technical details

Storage conditions	cool and dry
Working temperature	above -5°C
Temperature resistance	-40 to +100°C
Durability	> 20 years



Article number	Roll dimensions	Carton content	Content of pallets
7640115530080	40m x 60mm x 0,25 mm	10 rolls = 400m	48 cartons

Ampacoll® Easy

Linerless adhesive tape made of special paper



Paper-based acrylic adhesive tape for airtight sealing of overlaps and joints on smooth surfaces when working dry indoors with membranes or panel-like building materials. Thanks to the special membrane, it can be applied directly from the roll without having to peel off a liner.

- > Linerless, even in production: no waste
- > Fast to apply
- > Highly adhesive
- > No waste: lower risk of accidents
- > Can be torn by hand: no knife necessary

Technical details

Storage conditions	cool and dry
Working temperature	above +5°C
Temperature resistance	-40 to +100°C
Durability	> 20 years



Video



Article number	Roll dimensions	Carton content	Content of pallets
7640442091490	40m x 60mm	10 rolls = 400 m	60 boxes

Ampacoll® Easyfix

Linerless sealing patches made of special paper



Paper-based acrylic sealing patches for quick sealing of larger openings such as blow-in openings on smooth surfaces when working dry indoors with membranes or panel-like building materials. Thanks to the special membrane, it can be applied directly from the roll without having to peel off a liner.

- > Linerless, even in production: no waste
- > Fast to apply
- > Highly adhesive
- > Easy to tear thanks to ideal perforation

Technical details

Storage	cool and dry
Working temperature	from +5°C
Temperature resistance	-40 to +100°C
Ageing resistance	> 20 years



Video



Article number	Roll dimensions	Carton content	Content of pallets
7640442091551	180mm x 180mm 220 pieces/roll	2 rolls = 440 pieces	72 boxes

Ampacoll® Fenax 40/60 Vapour edge tape



Vapour edge tape to professionally join vapour checks or wood materials to bare brickwork or concrete. The airtight layer is created by plastering over the tape.

- > Can be plastered over
- > Fully adhesive on one side
- > Extremely adhesive
- > Split finger lift liner
- > No primer required on dry surfaces
- > For indoor and outdoor use
- > Can be left exposed to the weather for 12 months

Technical details

Storage conditions	cool and dry
Working temperature	-5 to +40°C
Temperature resistance	-40 to +100°C
Outdoor weathering	12 months (Central Europe)
Elongation at break	longitudinal 100% transverse 140%



Article number	Roll dimensions	Carton content
7640115536921	100mm × 25m Liner split: 40mm, 60mm	4 rolls = 100m

Ampacoll® BK 530 Butyl-rubber adhesive tape

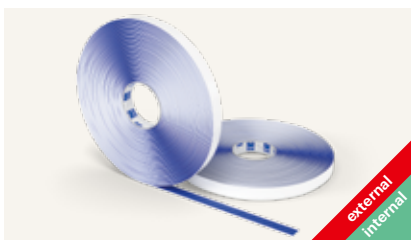


Double-sided butyl-rubber strip to tape wall membranes, vapour checks and vapour barriers. Also, almost any connections on wood, masonry, concrete, metal, etc. are easy to carry out and durable. Use a primer if necessary!

- > Vapour-barrier properties
- > High-quality butyl
- > > 300% elasticity
- > Smoothes uneven surfaces
- > Chlorine-resistant
- > Permanently elastic, does not become brittle

Technical details

Storage conditions	cool and dry
Working temperature	above 0°C
Temperature resistance	-40 to +90°C
Durability	> 20 years
Outdoor weathering	3 months



Ampacoll® BK 530 15 mm

Use to tape overlapping joints indoors and outdoors.



Ampacoll® BK 530 20 mm

Use for edge connections and to tape overlapping joints indoors and outdoors.

Article number	Description	Roll dimensions	Carton content	Content of pallets
7640115532954	Ampacoll® BK 530, 15mm	25m × 15mm × 1mm	8 rolls = 200m	60 cartons
7640115532985	Ampacoll® BK 530, 20mm	25m × 20mm × 2mm	8 rolls = 200m	32 cartons

Ampacoll® BK 535

Butyl-rubber adhesive tape



Sleeve formed by hand. Adhesive on one side of highly flexible butyl-rubber strip for durable, simple sealing of wood-based panels and penetrations through vapour checks and barriers, as well as rafters, purlins, vapour pipes, etc. Use a primer if necessary!

- > Split finger-lift liner
- > Vapour-barrier properties
- > Highly flexible – follows component movement
- > Easy to use – shape by hand
- > High-quality butyl
- > > 300% elasticity
- > Smoothes uneven surfaces
- > Chlorine-resistant
- > Permanently elastic, does not become brittle

Technical details

Storage conditions	cool and dry
Working temperature	above 0°C
Temperature resistance	-40 to +90°C
Durability	> 20 years
Elasticity	> 300%
Outdoor weathering	3 months



Ampacoll® BK 535
short roll, 50 mm



Ampacoll® BK 535
50 mm



Ampacoll® BK 535
80 mm

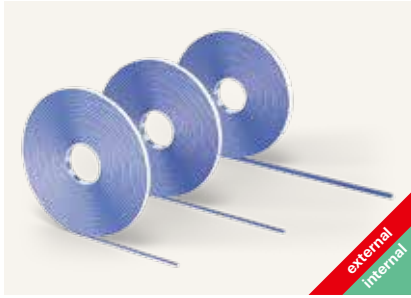


Ampacoll® BK 535
120 mm

Article number	Description	Roll dimensions	Carton content	Content of pallets
7640115533043	Ampacoll® BK 535, short roll, 50 mm	5 m × 50 mm × 2 mm	12 rolls = 60 m	40 cartons
7640115533012	Ampacoll® BK 535, 50 mm	25 m × 50 mm × 2 mm	4 rolls = 100 m	32 cartons
7640115533074	Ampacoll® BK 535, 80 mm	25 m × 80 mm × 2 mm	2 rolls = 50 m	40 cartons
7640115533104	Ampacoll® BK 535, 120 mm	30 m × 120 mm × 1,5 mm	2 rolls = 60 m	24 cartons

Ampacoll® RS

Round cord made from butyl rubber

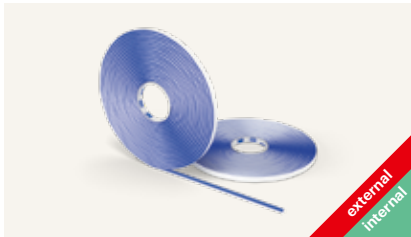


Self-adhesive round cord made from high-quality butyl rubber.

- > Vapour-barrier properties
- > For component connections on uneven surfaces
- > For connections on structured substrates
- > Ideal in joist areas
- > > 300% elasticity
- > Permanently elastic

Technical details

Storage conditions	cool and dry
Working temperature	above 0°C
Temperature resistance	-40 to +90°C
Durability	> 20 years
Outdoor weathering	3 months



Ampacoll® RS

4 mm

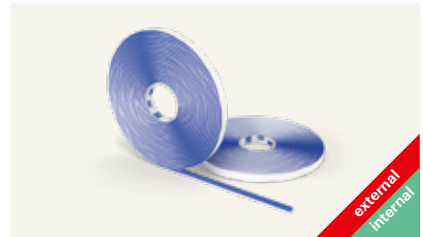
Air tight jointing of precisely-fitted wooden construction components with planed surfaces – e.g. window frames in unit components.



Ampacoll® RS

6 mm

Air tight jointing of precisely-fitted wall elements in wood-framed buildings, or edge connections between vapour checks and plaster.



Ampacoll® RS

10 mm

Air tight jointing of pre-produced concrete elements or precise building components, with a gap width up to 7mm.

Article number	Description	Roll dimensions	Carton content	Content of pallets
7640115533135	Ampacoll® RS, 4 mm	12 m × 4 mm	10 rolls = 120 m	32 cartons
7640115533166	Ampacoll® RS, 6 mm	8 m × 6 mm	10 rolls = 80 m	32 cartons
7640115533197	Ampacoll® RS, 10 mm	4,75 m × 10 mm	10 rolls = 47,5 m	32 cartons

Ampacoll® DT Installation tape



Double-sided adhesive tape for fast and durable fixing of vapour checks and metallic profiles in dry-wall constructions.

- > Robust and durable – excellent adhesive qualities
- > No chewing-gum effect, thanks to stable fibre inlay
- > Double-sided adhesive – for fast, staple-less installation

Technical details

Storage conditions	cool and dry
Working temperature	above -5°C
Temperature resistance	-40 to +80°C
Durability	> 20 years



Article number	Roll dimensions	Carton content	Content of pallets
7640115531667	50m × 20mm × 0,3mm	12 rolls = 600m	60 cartons

Ampacoll® DoubleSeal Double-sided adhesive



Double-sided adhesive moisture-resistant acrylic tape. The ideal jointing tape for metal sheeting and other flat surfaces.

- > Robust and durable – excellent adhesive qualities
- > No chewing-gum effect, thanks to stable fibre inlay
- > Double-sided adhesive – for fast, staple-less installation

Technical details

Working temperature range	above -5°C
Temperature resistance	-30 to +90°C



Article number	Roll dimensions	Carton content
7640115534941	30mm × 25m	8 rolls

Ampacoll® Cornerfix Self-adhesive inside and outside corners



Pre-fabricated, self-adhesive inside and outside corner for quick and easy creation of a permanently windtight or airtight and flexible joint, e.g. for windows, doors, etc. UV stable non-woven backing for external use.

- > Quick and clean connection of e.g. windows and doors: saves time
- > Dimensionally stable
- > Airtight, rainproof and windproof
- > Moisture resistant, for outdoor use
- > UV stable

Technical details

Storage	cool and dry
Working temperature	+5 to +30°C
Temperature resistance	-30 to +80°C
Ageing resistance	> 20 years
Outdoor weathering	3 months (prior to installation of façade surfacing)



Article number	Adhesive area	Carton content	Application
7640442091858	200 × 200 × 75 mm	20 pieces	Outside corner
7640442091827	75 × 75 × 75 mm	20 pieces	Inside corner

Ampacoll® Primax Primer for adhesive



Ampacoll® Primax is a solvent-free primer for Ampacoll butyl and acrylic adhesive strips on porous surfaces, such as masonry, plaster, concrete, bare wood, soft wood fibre board, etc.

- > Quick dry
- > Innovative non-stick screw cap
- > Handy square bottle that cannot roll away
- > Highly resistant even in unfavourable conditions (moisture, cold)
- > Solvent-free and odourless

Technical details

Storage conditions	+5 to +25 °C (keep out of direct sunlight.)
Working temperature	-10 to +45 °C (Surroundings and surface)
Temperature resistance	-40 to +90 °C
Drying time on dry surfaces:	+20 °C approx. 15 min. +5 °C approx. 30 min. 0 °C approx. 45 min.
Consumption	65-85 m (at 60 mm width, depending on surface)
Colour	transparent



Article number	Content	Carton content	Content of pallets
7640115536433	1000 ml	6 bottles	100 cartons

Ampacoll® Airmax Primer for adhesive



NEW FORMULATION:
also suitable for indoor use

Primer for Ampacoll adhesive strips on porous surfaces, such as masonry, plaster, concrete, bare wood, soft wood fibre board, etc. Suitable for use in difficult conditions (cold, damp)

- > Sprayable, faster than with a brush
- > Short drying time
- > Permanently tacky
- > Makes overhead and vertical work easier



Technical details

Storage conditions	+5 to +25 °C (keep out of direct sunlight.)
Working temperature	-5 to +35 °C (Surroundings and surface)
Temperature resistance	-20 bis +80 °C
Drying time on a dry background at:	+20 °C approx. 10 min. +5 °C approx. 20 min. 0 °C approx. 30 min. -5 °C approx. 40 min.
Productiveness	30-70 m at 60 mm width, depending on surface
Colour	transparent
Solvent	yes



Article number	Content	Carton content	Content of pallets
7640115536273	500 ml	12 bottles	75 cartons

Ampacoll® Elektro/Install Sleeves



Adhesive collar made of **Tyvek®** with an acrylic adhesive. Flexible, tear-resistant and age-resistant EPDM. Stays sealed even when moved or subjected to tensile loading.

Technical details	
Storage conditions	cool and dry
Working temperature range	above -5°C
Temperature resistance	-30 to +130°C
short-term up to	+160°C
Durability	> 20 years
Outdoor weathering	3 months



Ampacoll® Elektro 8
8–11 mm

Fields of application

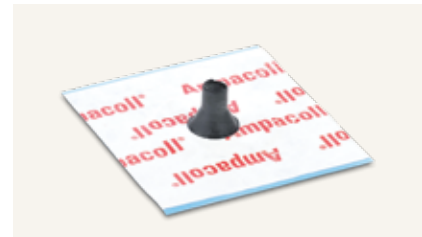
- > Data cable
- > Electrical cable
- > Electrical ductwork



Ampacoll® Elektro 8 duo
2 × 8–11 mm

Fields of application

- > Data cable
- > Electrical cable / Electrical ductwork
- > For double feed-through



Ampacoll® Elektro 15
15–22 mm

Fields of application

- > Heating pipes
- > Electrical ductwork



Ampacoll® Elektro 25
25–32 mm

Fields of application

- > Solar pipes
- > Water pipes



Ampacoll® Install 42
42–55 mm

Fields of application

- > Waste water pipes
- > Solar pipes
- > Water pipes



Ampacoll® Install 50
50–72 mm

Fields of application

- > Waste water pipes
- > Solar pipes
- > Water pipes



Ampacoll® Install 70
72–90 mm

Fields of application

- > Waste water pipes
- > Exhaust gas pipes
- > Water pipes
- > Ventilation pipes



Ampacoll® Install 90
90–100 mm

Fields of application

- > Waste water pipes
- > Exhaust gas pipes
- > Water pipes
- > Ventilation pipes



Ampacoll® Install 100
100–110 mm

Fields of application

- > Waste water pipes
- > Exhaust gas pipes
- > Ventilation pipes



Ampacoll® Install 100 flex 100–130 mm

Fields of application

- > Waste water pipes
- > Exhaust gas pipes
- > Ventilation pipes
- > Where a flexible feed-through is required

Article number	Description	Adhesive area	Sales unit
7640115533999	Ampacoll® Elektro 8 8–11 mm	150 × 150 mm	3 cartons with 10 pieces each
7640115533982	Ampacoll® Elektro 8 8–11 mm	150 × 150 mm	1 carton with 10 pieces each
7640115534033	Ampacoll® Elektro 8 duo 2 × 8–11 mm	150 × 150 mm	3 cartons with 10 pieces each
7640115534026	Ampacoll® Elektro 8 duo 2 × 8–11 mm	150 × 150 mm	1 carton with 10 pieces each
7640115534071	Ampacoll® Elektro 15 15–22 mm	150 × 150 mm	3 cartons with 10 pieces each
7640115534064	Ampacoll® Elektro 15 15–22 mm	150 × 150 mm	1 carton with 10 pieces each
7640115534118	Ampacoll® Elektro 25 25–32 mm	150 × 150 mm	3 cartons with 10 pieces each
7640115534101	Ampacoll® Elektro 25 25–32 mm	150 × 150 mm	1 carton with 10 pieces each
7640115534149	Ampacoll® Install 42 42–55 mm	230 × 230 mm	1 carton with 4 pieces each
7640115534156	Ampacoll® Install 42 42–55 mm	230 × 230 mm	3 cartons with 4 pieces each
7640115537072	Ampacoll® Install 50 50–72 mm	230 × 230 mm	1 carton with 4 pieces each
7640115537119	Ampacoll® Install 72 72–90 mm	230 × 230 mm	1 carton with 4 pieces each
7640115537157	Ampacoll® Install 90 90–100 mm	230 × 230 mm	1 carton with 4 pieces each
7640115534194	Ampacoll® Install 100 100–110 mm	320 × 320 mm	3 cartons with 4 pieces each
7640115534187	Ampacoll® Install 100 100–110 mm	320 × 320 mm	1 carton with 4 pieces each
7640115534231	Ampacoll® Install 100 flex 100–130 mm	320 × 320 mm	3 cartons with 4 pieces each
7640115534224	Ampacoll® Install 100 flex 100–130 mm	320 × 320 mm	1 carton with 4 pieces each

Ampacoll® Radon Sleeves



Sleeves for radon-tight sealing of round penetrations. For indoor and outdoor use in construction (must be additionally secured with a hose clamp). The sleeves consist of an EPDM moulded part embedded in an aluminium flange with an adhesive surface made of butyl.

- > Certified radon-tight
- > Remains impermeable even if exposed to movements or tensile force
- > Easy-peel silicon paper
- > Long EPDM moulded part – sticks tightly to the penetration

Technical details

Storage	cool and dry
Application temperature	from 0°C
Temperature resistance	-40 to +100°C
Durability	> 20 years
Outdoor weathering	3 months



Ampacoll® Radon 8
8 – 12 mm



Ampacoll® Radon 15
15 – 22 mm



Ampacoll® Radon 25
25 – 32 mm



Ampacoll® Radon 70
70 – 92 mm



Ampacoll® Radon 100
100 – 110 mm



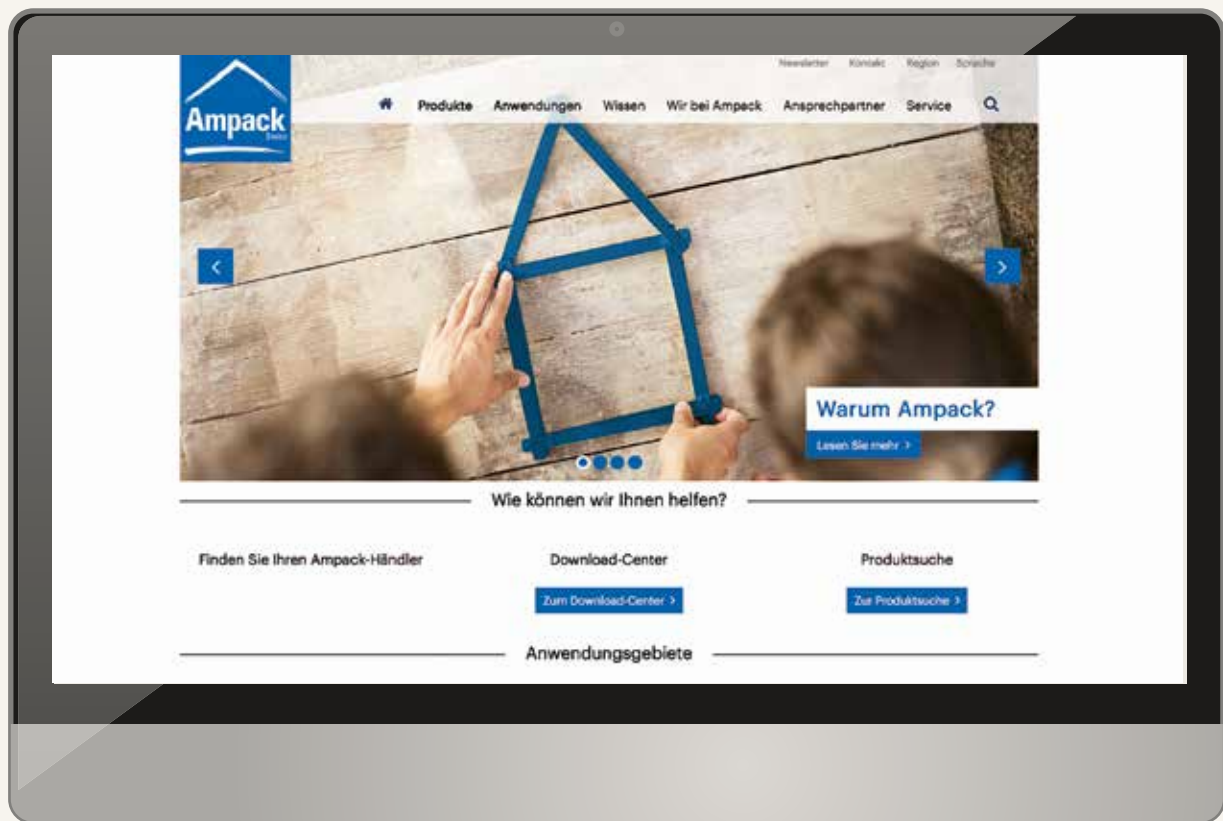
Ampacoll® Radon 125
125 – 135 mm



Ampacoll® Radon 150
150 – 165 mm

Article number	Description	Adhesive area	Carton content
7640115538505	Ampacoll® Radon 8 8 – 12 mm	150 × 150 mm	10 pieces
7640115538536	Ampacoll® Radon 15 15 – 22 mm	150 × 150 mm	10 pieces
7640115538567	Ampacoll® Radon 25 25 – 32 mm	150 × 150 mm	10 pieces
7640115538598	Ampacoll® Radon 70 70 – 92 mm	230 × 230 mm	4 pieces
7640115538628	Ampacoll® Radon 100 100 – 110 mm	320 × 320 mm	4 pieces
7640115538659	Ampacoll® Radon 125 125 – 135 mm	320 × 320 mm	4 pieces
7640115538680	Ampacoll® Radon 150 150 – 165 mm	350 × 350 mm	4 pieces

Our 2000-page catalogue at the click of a mouse: www.ampack.biz



Daily updated product data

- > Membranes
- > Adhesive technology
- > Noise protection



Ampack Download-Center

- > Application photos
- > Declarations of performance
- > Insert sheets
- > etc.



Construction drawings

- > Find all technical drawings easily and quickly



Konstruktionszeichnungen

- > Finden Sie schnell und einfach alle Aufbauzeichnungen



Be the first to hear about new products

- > Discover news and events

Ampacoll® Fenax



fenax.ampack.biz



Ampacoll® Fenax
Window connection
tape
> Details p. 65

external
internal



Ampacoll® Komprimax M & K
Joint sealing tapes
> Details p. 68

external
internal



Ampacoll® Sillskin black
For covering
parapets
> Details p. 70

external
internal



Ampacoll® Maxiflex
Flexible PU foam
> Details p. 71

external
internal

Ampacoll® Fenax Window connection tape



Fully adhesive on one side with and without split liner. This window connection tape is ideal for creating tight connections of windows or doors **after** installation.

- > Extremely adhesive even at low temperatures
- > Adhesive all over
- > Moisture variable
- > Same tape for both inside and outside use The «tighter inside than outside» requirement is met
- > Easy-peel liner
- > Safe to plaster over
- > No primer required on dry surfaces
- > Weather resistant for 12 months



Technical details	
Operating temperature	-5 to +40 °C
Temperature resistance	-40 to +100 °C
UV stability	12 months (Central Europe)
Tear resistance	
lengthways	220 N
crossways	280 N
Elongation at break	
lengthways	100 %
crossways	140 %
S _d value	1,5-16,5 m



Item no.	Identification	Roll size	Box contents	Pallet contents
7640442092053	Ampacoll® Fenax 15/60	25 m × 75 mm Liner split: 15 mm, 60 mm	8 rolls = 200 m	60 boxes
7640442092091	Ampacoll® Fenax 75	25 m × 75 mm	8 rolls = 200 m	60 boxes
7640115537362	Ampacoll® Fenax 15/85	25 m × 100 mm Liner split: 15 mm, 85 mm	4 rolls = 100 m	84 boxes
7640115536921	Ampacoll® Fenax 40/60	25 m × 100 mm Liner split: 40 mm, 60 mm	4 rolls = 100 m	84 boxes
7640442092060	Ampacoll® Fenax 15/135	25 m × 150 mm Liner split: 15 mm, 135 mm	4 rolls = 100 m	60 boxes
7640442091469	Ampacoll® Fenax 15/185	25 m × 200 mm Liner split: 15 mm, 185 mm	2 rolls = 50 m	84 boxes

*Joint properties in accordance with ift Guideline MO-01/1:
2007 – section 5 18-002878-PR03 (PB-E03-020310-de)

Adhesive zones

Ampacoll® Fenax



 Fleece
 Adhesive

Ampacoll® Fenax DS

Window connection tape, double-sided



One side is fully adhesive, the other has a fleece layer with a 30 mm wide adhesive strip attached to it. This window connection tape is ideal for creating tight connections of windows or doors **before** installation.

- > Extremely adhesive even at low temperatures
- > Adhesive all over
- > Moisture variable
- > Same tape for both inside and outside use The «tighter inside than outside» requirement is met
- > Easy-peel liner
- > Safe to plaster over
- > No primer required on dry surfaces
- > Weather resistant for 12 months



Technical details

Operating temperature	-5 to +40 °C
Temperature resistance	-40 to +100 °C
UV stability	12 months (Central Europe)
Tear resistance	
lengthways	220 N
crossways	280 N
Elongation at break	
lengthways	100 %
crossways	140 %
s _d value	1,5–16,5 m

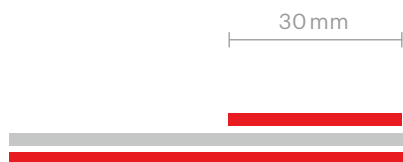


Item no.	Identification	Roll size	Box contents	Pallet contents
7640442092084	Ampacoll® Fenax 30/45 DS	25 m × 75 mm Liner split: 30 mm, 45 mm	8 rolls = 200 m	60 boxes
7640115537546	Ampacoll® Fenax 30/70 DS	25 m × 100 mm Liner split: 30 mm, 70 mm	4 rolls = 100 m	84 boxes
7640115537607	Ampacoll® Fenax 30/170 DS	25 m × 200 mm Liner split: 30 mm, 170 mm	2 rolls = 50 m	84 boxes

* Joint properties in accordance with ift Guideline MO-01/1:
2007 – section 5 18-002878-PR03 (PB-E03-020310-de)

Adhesive zones

Ampacoll® Fenax DS



— Fleece
— Adhesive

Ampacoll® Fenax FO

Window connection tape, pre-folded



Fully adhesive on one side and prefolded. This window connection tape is ideal for creating tight connections of windows or doors **after** installation.

- > Extremely adhesive even at low temperatures
- > Adhesive all over
- > Moisture variable
- > Same tape for both inside and outside use The «tighter inside than outside» requirement is met
- > Easy-peel liner
- > Safe to plaster over
- > No primer required on dry surfaces
- > Weather resistant for 12 months



Technical details

Operating temperature	-5 to +40 °C
Temperature resistance	-40 to +100 °C
UV stability	12 months (Central Europe)
Tear resistance	
lengthways	220 N
crossways	280 N
Elongation at break	
lengthways	100 %
crossways	140 %
s _d value	1,5–16,5 m



Item no.	Identification	Roll size	Box contents	Pallet contents
7640442092077	Ampacoll® Fenax 15/60 FO	25 m × 75 mm Liner division: 15 mm	8 rolls = 200m	42 boxes
7640115537454	Ampacoll® Fenax 15/85 FO	25 m × 100 mm Liner division: 15 mm	6 rolls = 150m	42 boxes
7640115537485	Ampacoll® Fenax 15/135 FO	25 m × 150 mm Liner division: 15 mm	4 rolls = 100m	42 boxes

* Joint properties as per ift guideline MO01/1:
2007 – Section 5 18-002878-PR03 (PB-E03-020310-de)

Adhesive zones

Ampacoll® Fenax FO



— Fleece
— Adhesive

Ampacoll® Komprimax M Multifunctional tapes



Sealed connection of doors and windows in solid, wood and metal constructions.

- > Stress group MF 1
- > Airtight in accordance with DIN 18542 BGR
- > Each roll is shrink-wrapped and marked
- > No variation in tape thickness over the entire roll
- > Re-usable seal prevents swelling when stored



Technical details

Stress group	MF 1 (in accordance with DIN 18542)
Storage time	12 months
Unit weight	approx. 85 kg/m³
Driving rain impermeability	≥ 1050 Pa
Temperature resistance	-20 to +80°C
Operating temperature	from -5°C
Building material class	B1 (in accordance with DIN 4102)



Item no.	Identification	Joint width	Color	Box contents
7640115538055	Ampacoll® Komprimax M 60/6-15	6 – 15 mm	anthracite	12 rolls, each 53 mm × 8 m = 96 m
7640115538086	Ampacoll® Komprimax M 60/10-20	10 – 20 mm	anthracite	12 rolls, each 53 mm × 6 m = 72 m
7640115538116	Ampacoll® Komprimax M 70/6-15	6 – 15 mm	anthracite	10 rolls, each 63 mm × 8 m = 80 m
7640115538147	Ampacoll® Komprimax M 70/10-20	10 – 20 mm	anthracite	10 rolls, each 63 mm × 6 m = 60 m
7640115538178	Ampacoll® Komprimax M 70/15-30*	15 – 30 mm	anthracite	10 rolls, each 63 mm × 4 m = 40 m
7640115538208	Ampacoll® Komprimax M 80/6-15	6 – 15 mm	anthracite	8 rolls, each 73 mm × 8 m = 64 m
7640115538239	Ampacoll® Komprimax M 80/10-20	10 – 20 mm	anthracite	8 rolls, each 73 mm × 6 m = 48 m
7640115538260	Ampacoll® Komprimax M 80/15-30*	15 – 30 mm	anthracite	8 rolls, each 73 mm × 4 m = 32 m
7640115538291	Ampacoll® Komprimax M 90/6-15	6 – 15 mm	anthracite	8 rolls, each 83 mm × 8 m = 64 m
7640115538321	Ampacoll® Komprimax M 90/10-20	10 – 20 mm	anthracite	8 rolls, each 83 mm × 6 m = 48 m
7640115538352	Ampacoll® Komprimax M 90/15-30*	15 – 30 mm	anthracite	8 rolls, each 83 mm × 4 m = 32 m
7640115538383	Ampacoll® Komprimax M 100/10-20*	10 – 20 mm	anthracite	6 rolls, each 93 mm × 6 m = 36 m

*Delivery time and MOQ on request



«A window is only as good as its connection.»

Adrian Schwarz
Junior Sales Manager Export

Ampacoll® Komprimax K Joint sealing tapes



Sealing of joints and connections in window, solid, wood and metal constructions even under conditions of driving rain.

- > Stress group 1 (BG 1)
- > Each roll is shrink-wrapped and marked
- > With delay effect
- > No variation in tape thickness over the entire roll
- > Re-usable seal prevents swelling when stored



Technical details

Stress group	BG 1 (in accordance with DIN 18542)
Storage time	12 months
Unit weight	approx. 85 kg/m³
Driving rain impermeability	≥ 750 Pa
Temperature resistance	-20 to +80 °C
Operating temperature	from -5 °C
Building material class	B1 (in accordance with DIN 4102)



Item no.	Identification	Joint width	Color	Box contents
7640115537904	Ampacoll® Komprimax K 10/2-6	2 – 6 mm	anthracite	36 rolls, each 10 mm × 12 m = 432 m
7640115538710	Ampacoll® Komprimax K 10/2-6*	2 – 6 mm	grey	36 rolls, each 10 mm × 12 m = 432 m
7640115537935	Ampacoll® Komprimax K 15/2-6	2 – 6 mm	anthracite	24 rolls, each 15 mm × 12 m = 288 m
7640115538741	Ampacoll® Komprimax K 15/2-6	2 – 6 mm	grey	24 rolls, each 15 mm × 12 m = 288 m
7640115537966	Ampacoll® Komprimax K 15/5-12	5 – 12 mm	anthracite	24 rolls, each 15 mm × 8 m = 192 m
7640115538772	Ampacoll® Komprimax K 15/5-12	5 – 12 mm	grey	24 rolls, each 15 mm × 8 m = 192 m
7640115537997	Ampacoll® Komprimax K 20/2-6*	2 – 6 mm	anthracite	18 rolls, each 20 mm × 12 m = 216 m
7640115538802	Ampacoll® Komprimax K 20/2-6*	2 – 6 mm	grey	18 rolls, each 20 mm × 12 m = 216 m
7640115538024	Ampacoll® Komprimax K 20/5-12	5 – 12 mm	anthracite	18 rolls, each 20 mm × 8 m = 144 m
7640115538833	Ampacoll® Komprimax K 20/5-12	5 – 12 mm	grey	18 rolls, each 20 mm × 8 m = 144 m
7640115538901	Ampacoll® Komprimax K 20/10-20	10 – 20 mm	anthracite	18 rolls, each 20 mm × 4 m = 72 m
7640115539892	Ampacoll® Komprimax K 20/10-20	10 – 20 mm	grey	18 rolls, each 20 mm × 4 m = 72 m
7640115539953	Ampacoll® Komprimax K 25/10-20*	10 – 20 mm	anthracite	14 rolls, each 25 mm × 4 m = 56 m
7640115539922	Ampacoll® Komprimax K 25/10-20*	10 – 20 mm	grey	14 rolls, each 25 mm × 4 m = 56 m
7640442090264	Ampacoll® Komprimax K 30/8-15*	8 – 15 mm	grey	12 rolls, each 30 mm × 5 m = 60 m
7640442090295	Ampacoll® Komprimax K 40/13-24*	13 – 24 mm	anthracite	8 rolls, each 40 mm × 3 m = 24 m
7640442090325	Ampacoll® Komprimax K 40/13-24*	13 – 24 mm	grey	8 rolls, each 40 mm × 3 m = 24 m
7640442090356	Ampacoll® Komprimax K 40/25-35*	25 – 35 mm	anthracite	8 rolls, each 40 mm × 2 m = 16 m
7640442090387	Ampacoll® Komprimax K 40/25-35*	25 – 35 mm	grey	8 rolls, each 40 mm × 2 m = 16 m

*Delivery time and MOQ on request

Ampacoll® Sillskin black Window sill covering



Highly elastic butyl rubber strip for covering parapets in timber construction. Serves as protection before windows are installed or as a seal on window sill.

- > Stretchable
- > Split liner for easier window installation
- > Easy unrolling from a sturdy carton
- > Tested for tightness against stagnant water by IFT Rosenheim



Technical details

Storage	Cool and dry
Operating temperature	from 0°C
Temperature resistance	-40 to +90°C
Resistance to ageing	> 20 years
Natural weathering period	3 month



Item no.	Roll size	Box contents
7640442092350	20m × 150mm × 1mm	1 box
7640442092374	20m × 200mm × 1mm	1 box
7640442092398	20m × 300mm × 1mm	1 box

Ampacoll® FE Window installation tape



Modified acrylic adhesive with thread inlay on synthetic fibre paper. Adhesive tape with adhesive-free intermediate space and sectioned pull-off liner made of tear-resistant PE film. The ideal adhesive tape for airtight taping of window joints, corner connections and panel butts.

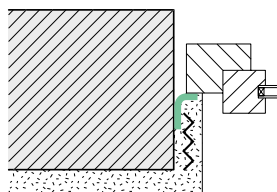
- > Vapour-dampening zone
- > Adhesive-free zone: accommodates movement
- > System product for external window bonding: **Ampacoll® XT** 60mm, double-slit

Technical details

Storage conditions	cool and dry
Working temperature	above -5°C
Temperature resistance	-30 to +90°C
Durability	> 20 years



Article number	Roll dimensions	Carton content	Content of pallets
7640115533425	25m × 60mm × 0,3mm	10 rolls = 250m	68 cartons



Ampacoll® Maxiflex

Flexible PU foam



Moisture-curing, flexible PU pistol foam. For filling window joints and a wide variety of other joints, cavities and penetrations. Especially handy for narrow sealing areas (e.g. renovation work). For sealing, damping and insulating.

- > Also suitable for low temperatures
- > No embrittlement
- > For mounting, sticking, damping and filling



Technical details

Can temperature	+5 to +30°C
Working temperature	-10 to +35°C
Temperature resistance	-40 to +80°C
Cuttable after (Ø 20 mm, temperature-dependent)	0.5 to 6 h
Curing (temperature-dependent)	1-8 h
Noise protection value	≥ 62 dB
Foam yield	38 liters
Building material class	B2 (in accordance with DIN 4102)



Item no.	Product name	Can size	Box contents	Content of pallets
7640442090844	Ampacoll® Maxiflex	750ml	12 cans	70 cartons

Zubehör

Adhesive technology



Caulking gun

- > Suitable for tubular bags up to 620 ml
- > Ideal for **Ampacoll® Superfix** and **Ampacoll® RA**
- > Extremely robust
- > Strong non-slip aluminium tube
- > Thrust ratio 17:1
- > Smooth, consistent application thanks to two sliding bearings

Article number
7640115533326



Pressure rollers

- > Roll material: silicone
- > Ball bearings
- > Single arm with wood handle

Article number	Roll width
7640115535740	45 mm
7640115535641	90 mm



Ampacoll® Pressly

Pressing aid

Article number	Sales unit
7640115536846	carton with 150 pieces each



Milwaukee® FASTBACK

universal folding knife

Article number	Sales unit
7640442091407	carton with 1 piece each

Ampack

Point of Sale Display



Structure:

Left: One main body incl. 1 insert for 4 membrane rolls, Ø ~17 cm

Right: Four shelves incl. one insert for 30 cartridges, Ø ~5.3 cm

Branded permanent display made of robust plywood, for professional presentation of your Ampack products (membranes as well as adhesive technology). Inserts with milled holes ensure stability for the products, while two brochure holders allow you to offer your customers a range of information material. Product labels can be ordered in addition.

- > Quick to assemble
- > Strong material
- > Reducible in height thanks to removable topper
- > Insert with milled holes to keep the products stable
- > Two A4 brochure holders on the left and right

Technical details	
Height	150–180 cm (removable 30cm topper)
Width	97,5 cm
Depth	45 cm
Material	Plywood, digitally printed
Material thickness	6 mm
Packaging	Single, flat
Delivery	On pallet
Assembly time	~20–30 minutes

Item no.	Product name	Dimensions
7640442091049	Complete POS display	150–180×97,5×45 cm
7640442090813	Adhesive technology POS display	150–180×50,5×45 cm



Fire? I stay calm.

Non-combustible assortment

> 8, 9, 22, 23, 29 and 53

**Ampatop®
A silver plus**
Roof membrane

**Ampatop®
A black**
Wall membrane

Adhesive technology/
Window installation



Information brochure

**Ampatex®
A primo plus**
Vapour check

World's First



Noise protection

Idikell® M 4021/05 Heavy foil



Massive improvement in noise protection – depending on construction. Visco-elastic heavy foil with adhesive coating for use in construction, ventilation ducts, façade components, ceiling constructions, sinks, lightweight walls, doors, roller-fronted cupboards, baths, etc.*

- > Excellent noise reduction
- > Reduces droning

Technical details

Fire behaviour	E
Weight	approx. 10 kg/m²
Working-temperature	+15 to +20°C
Temperature resistance	-10 to +80°C
Storage conditions	dry, 10 to 25°C
μ value	2,02 × 10⁴
Thickness	approx. 5 mm

Article number	Sheet dimensions	Content of pallets
7640115535153	1000 × 500 mm × 5 mm**	90 pcs. = 45 m²
7640131990912	1000 × 500 mm × 5 mm**	180 pcs. = 90 m²

*Note: Avoid direct contact between Idikell® M 4021/05 with materials that contain softeners or solvents.

**Dimensional tolerances of ± 3 mm in width and length are possible.



Construction of a broadcasting studio with Idikell® heavy foils

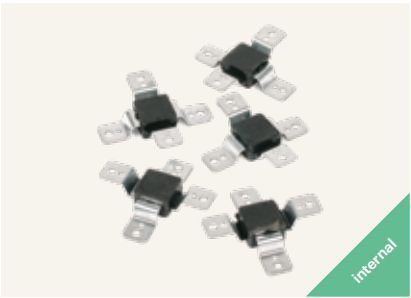


«Is your noise problem a burden for you and your environment? With **Idikell®** the noise stays outside!»

Magnus Vohn
Export Manager

Accessories

Noise protection



Ampaphon® Z 600

These acoustic-oscillation elements provide a clear separation between structural shells and pliable decorative shells. The transmission of structure-borne vibration is effectively repressed by a special rubber in the crossover area. The oscillation elements can be used for ceilings and walls.

Technical details	
Tensile loading	max. 28 kg
Special features	no shear stress
Number of elements m²	approx. 3 to 4 items

> System accessory for **Idikell®**

Article number	Sales unit
7640131992183	100 pieces



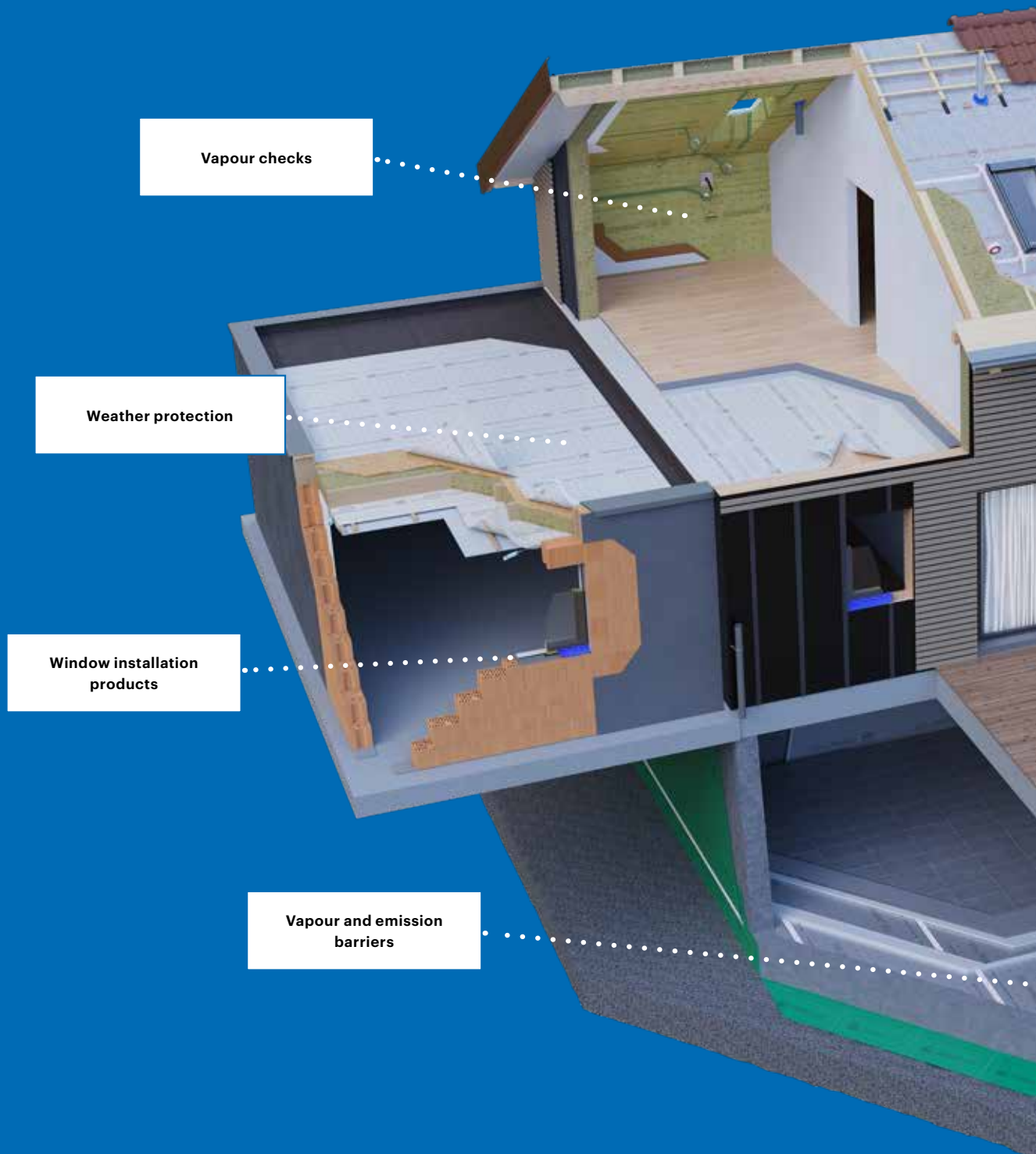
Ampaphon® Z 101/05

Self-adhesive felt tape as an accessory for Idikell®. Placement strips for float-laying heavy foils.

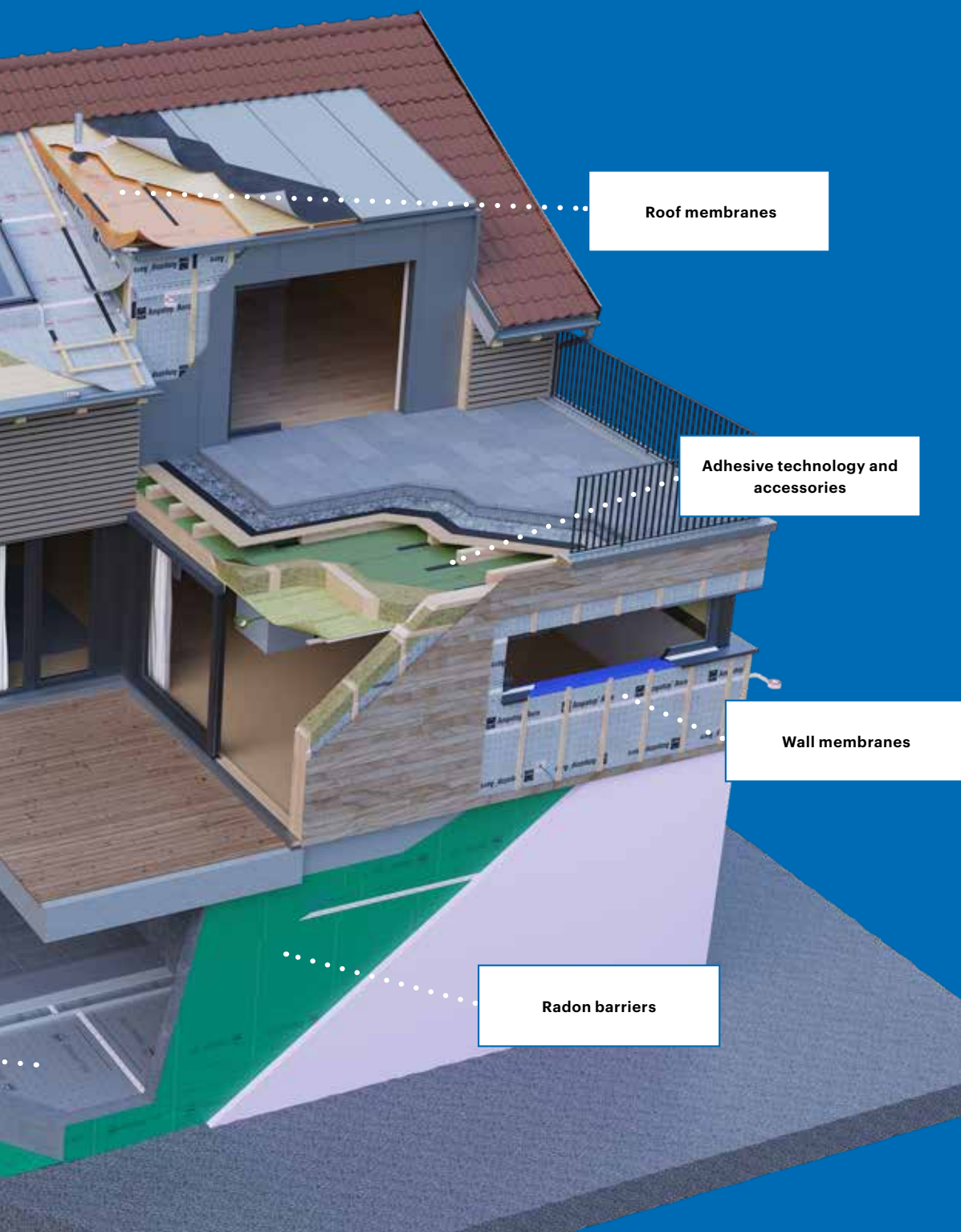
Technical details	
Storage conditions	cool and dry
Durability	> 20 years

Article number	Roll dimensions	Carton content
7640131992046	10m × 40mm × 5mm	5 rolls = 50m
7640131992077	10m × 60mm × 5mm	5 rolls = 50m

The building shell experts. Since 1946.



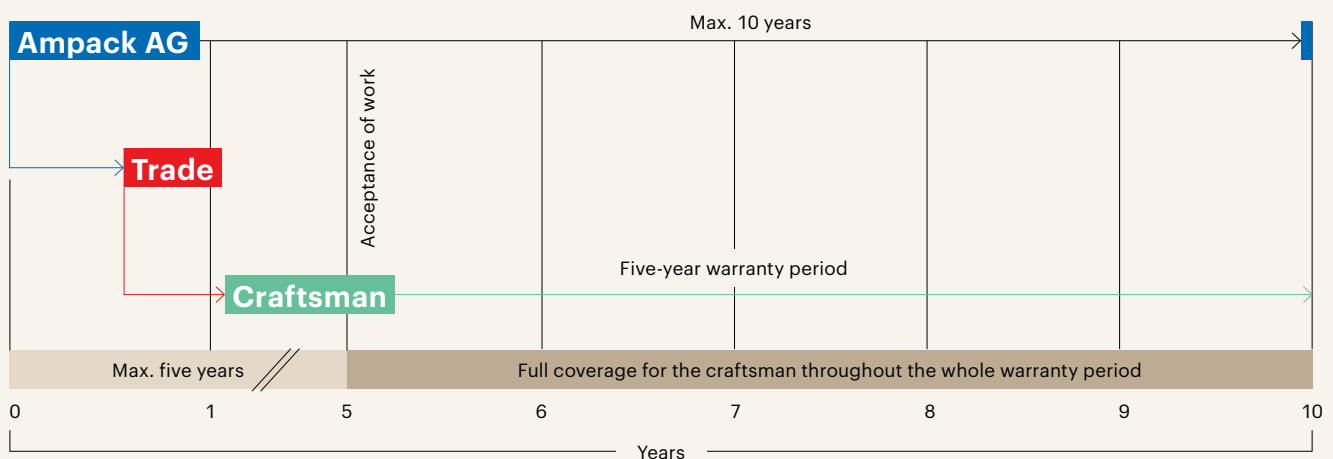
ampack.biz



Ampack warranties



The ten-year craftsman's warranty*



Occasionally a product falls below its guaranteed specifications, which impairs its functionality. Naturally the craftsman is dealt the worst hand in this case, as they have to defend the quality of the work they have carried out.

Ampack's extra-contractual warranty on behalf of the craftsman covers the entire warranty period that the worker has vis-à-vis the client.

The fabricator can make a claim under the full warranty at any time up to 10 years after the products have been delivered by Ampack, even if it takes up to five years for the work to be accepted after Ampack has delivered the material.

Ampack AG's ten-year skilled manual worker warranty covers:

- > Replacement of materials
- > Conversion costs
- > Installation costs

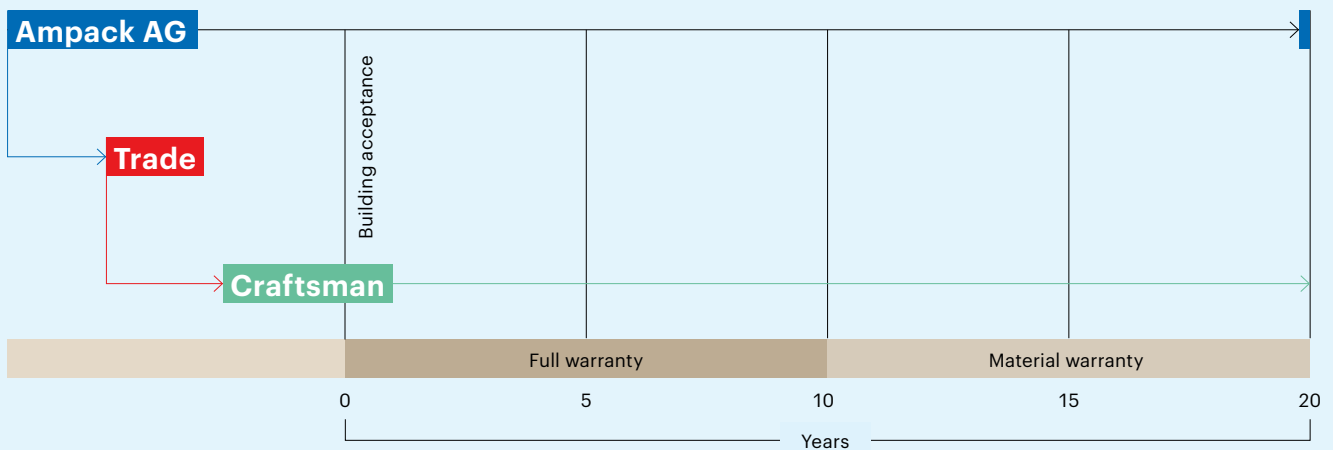


Our warranty conditions and the property registration form can be found on our website **ampack.biz**.

*valid within Europe



The 20-year premium warranty*



Ampack's extended warranty comes in handy when the craftsman wants to give their customers added peace of mind. It is **property-specific** and insures the utilised Ampack products¹ for more than 20 years. This offers much greater protection at no additional cost: Ten-year full warranty, plus 10-year material warranty.

Ampack AG's 20-year premium warranty covers:

- ★ **Replacement of materials:** for 20 years after acceptance of the work
- ★ **Conversion costs:** for 10 years after acceptance of the work
- ★ **Installation costs:** for 10 years after acceptance of the work



Conditions for the 20-year premium warranty

- > The selected products are used correctly. Corresponding information is provided in the sales programme for each product.
- > The applicable standards, construction best practices and Ampack application guidelines are adhered to.
- > The products are used within 2 years of purchase and are stored correctly, and any expiry dates are observed.
- > The property registration form is filled in, signed and submitted.

*valid within Europe

¹A list of products excluded from the 20-year warranty can be found in the warranty conditions.

Adhesive Matrix

Key

- 1 One side of material must be open diffusion
- 2 Film must not exude any separating agents or lubricants
- 3 Only as aid to assembly
- 4 Only for edge connections

▲ For external use

▲ For internal use

■ Use primer

* Overlaps are welded.

Other suitable accessories can be found from page 14.

Adhesive Matrix

This information constitutes recommendations for optimum work results. Please ensure that you take note of the relevant product data sheets. Ampack will be happy to answer any questions you might have. Based on our experience and the recommendations given in the standards, mechanical protection should be used in the connection area. In many cases this facilitates the application of the interior lining. In order to ensure the optimum adhesion to guarantee the long-term wind and airtightness of the

[illegible]

layers, the surfaces to be bonded must be clean, dry and free from any dust, ice or grease. For production reasons, release agents are used on certain surfaces (e.g. ready-mixed and monolithic concrete, OSB panels, galvanised metal, etc.). In cases of doubt use a primer or undertake your own adhesion tests. Ongoing natural weathering or permanent moisture can damage the adhesive or make it unusable.

When nature proves its strength



Ampatex® Eco 5 extra

Sustainable vapour check and airtight layer,
lattice-reinforced

> Page 26



eco.ampack.biz

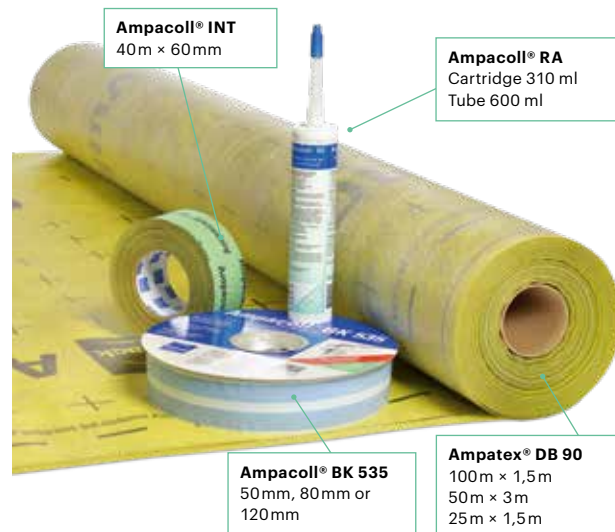
Product catalogue

Ampacoll® A Tape black.....	53	Ampatex® A primo plus.....	29
Ampacoll® A Tape silver.....	53	Ampatex® Cento.....	27
Ampacoll® Airmax.....	59	Ampatex® DB 90.....	25
Ampacoll® BK 530.....	55	Ampatex® Eco 5 extra.....	26
Ampacoll® BK 535.....	56	Ampatex® LDA 0.02 plus.....	39
Ampacoll® Cornerfix.....	58	Ampatex® Ombrello.....	35
Ampacoll® DoubleSeal.....	15/58	Ampatex® Reflecto VCL.....	52
Ampacoll® DT.....	58	Ampatex® SB 130 (plus).....	33
Ampacoll® Easy.....	54	Ampatex® Solero plus.....	33
Ampacoll® Easyfix.....	54	Ampatex® Variano 3.....	28/31
Ampacoll® Elektro / Install.....	60	Ampatex® Variano 3 extra.....	28/31/37
Ampacoll® FE.....	70		
Ampacoll® Fenax 40/60.....	55	Ampatop® A black.....	8/22
Ampacoll® Fenax, window connection tapes.....	65	Ampatop® A silver plus.....	9/23
Ampacoll® Flexx pro.....	51	Ampatop® Aero (plus).....	7/19
Ampacoll® INT.....	54	Ampatop® F black plus.....	21
Ampacoll® Komprimax M.....	68	Ampatop® Protecta (plus).....	5
Ampacoll® Komprimax K.....	69	Ampatop® Reflecto WS.....	19
Ampacoll® LiquiSeal.....	14	Ampatop® RF black (plus).....	21
Ampacoll® LiquiSeal Applicator.....	14	Ampatop® RF Color plus.....	22
Ampacoll® Maxiflex.....	71	Ampatop® Seal.....	12
Ampacoll® ND.....	46	Ampatop® Seal GHS.....	13
Ampacoll® ND.Band.....	46	Ampatop® SealEdge.....	15
Ampacoll® ND Duo.....	46	Ampatop® SealEdge GHS.....	15
Ampacoll® Pressly.....	71	Ampatop® SealStripe.....	14
Ampacoll® Primax.....	59	Ampatop® SealStripe GHS.....	14
Ampacoll® Profix.....	15/48	Ampatop® Secura (plus).....	7
Ampacoll® RA.....	47		
Ampacoll® Radon.....	62	Idikell® M 4021/05.....	74
Ampacoll® Reflecto Tape.....	52		
Ampacoll® RS.....	57	Sisalex® 30.....	41
Ampacoll® SealForm.....	16	Sisalex® 303.....	27
Ampacoll® Sillskin black.....	70	Sisalex® 514.....	40
Ampacoll® Superfix.....	47	Sisalex® 518.....	40
Ampacoll® TubeSeal.....	14	Sisalex® 871.....	41
Ampacoll® UV.....	52		
Ampacoll® UV flexx.....	52	Caulking gun.....	71
Ampacoll® XT.....	49	Milwaukee® FASTBACK™.....	71
Ampacoll® XT FO.....	50	Point of Sale Display.....	72
		Pressure rollers.....	71
Ampaphon® Z 101/ 05.....	75		
Ampaphon® Z 600.....	75		

Our roof system. Security in any weather!



Our airtight system. Benefit from the advantages!



Ampatop® Aero

- > Diffusion-open yet wind-proof
- > Cutting and orientation aid
- > **Ampatop® Aero plus:** integrated tapes on both sides
- > Also suited as wall membrane

Ampacoll® XT 60 mm

- > Carrier open to diffusion
- > Dimensionally stable thanks to tear-resistant backing
- > Extremely robust and durable
- > Highest bond strength from as low as -5°C
- > Can be plastered over Four months' natural weathering period

Ampacoll® Superfix

- > Adheres to almost all sub-surfaces
- > Even damp building materials can be bonded
- > Workable down to -20°C
- > No primers necessary
- > Always easy to squeeze out

Ampacoll® BK 535

- > Extremely flexible and can be shaped in three dimensions
 - > Always the right sleeve
- > Highly flexible, follows movements of the component and evens out rough substrates
 - > 2mm thick, unlike cheaper products
- > Vapour seal for use indoors and outdoors

Ampacoll® BK 535

Ampatex® DB 90

- > Standard in roof and wall construction
- > s_d value 20m – for universal application
- > Compatible with all standard heat insulation materials
- > Dimensionally stable, tear-resistant and supple
- > Also available as a purlin connection strip 75cm wide

Ampacoll® INT

- > Adhesive tape system for two applications:
 - overlaps and
 - penetrations
- > Robust, flexible and can be torn by hand
- > Translucent

Ampacoll® RA

- > Odourless – free from solvents
- > No primers necessary
- > Bonds to almost all sub-surfaces
- > Cartridge always easy to squeeze out

Your benefits

More security in the roof and the façade with the complete system from a single source.

Ampatop® Aero (plus) is a three-layer, high tensile roofing and wall membrane. More on www.ampack.biz.

external

Your benefits

Complete airtight system from a single source. Verifiable airtightness thanks to the perfectly matched, high-quality components. You can find even more systems on www.ampack.biz.

internal

So that only you sit in the rain.



Ampatex® Ombrello

Self-adhesive vapour check
and weather protection

> Details p. 35



ombrello.ampack.biz

General Terms and Conditions of Business, Ampack AG

1. General

- a) The quotations, deliveries and services of Ampack AG are provided exclusively on the basis of these Terms and Conditions of Business. It will be assumed that these Terms and Conditions of Business have been accepted when an order is placed. Any deviating Terms and Conditions imposed by the customer will be rejected, unless otherwise agreed in writing. Ampack AG's General Terms and Conditions of Business apply to dealers and other customers who are not tradespeople.
- b) Written confirmation will be required in each case for any deletion or revision to the General Terms and Conditions of Business.
- c) Verbal assurances from Ampack AG will only become valid when they are confirmed in writing and undersigned.
- d) Quotations are non-binding and subject to confirmation. The contract between Ampack AG and the customer only comes into force when the order is accepted by Ampack AG. Ampack AG will either accept the order by issuing an order confirmation or by delivering the ordered goods.

2. Designs and technical documents

Brochures and catalogues are non-binding. Information given in designs and technical documents are only binding if they have been expressly guaranteed. Ampack AG retains all rights to the designs and technical documents it has provided. If no order is awarded, the designs relating to the quotation must be returned to Ampack AG immediately. We provide calculations free of charge. They represent no commitment in the form of a legally binding planning service. Calculations should be checked by the planning service and the implementing company.

3. Prices

- a) The prices are quoted net, in Euro, ex-works, unpacked, excluding Value added Tax (VAT) and other duties, unless otherwise agreed in writing. Packaging, freight, carriage and any further costs will be invoiced separately.

4. Payment terms

- a) The purchase price must be paid net upon separate agreement.
- b) The agreed payment dates must be met by the customer, even if transport, delivery, installation or acceptance has been delayed or prevented for reasons that are not the responsibility of Ampack AG, or if unimportant parts are missing, or if it becomes clear that additional work is necessary, as long as this does make it impossible to use the delivered goods. The customer does not have the right to unilaterally curtail, offset or hold back payments as a result of complaints, claims or un-recognised counter-claims. This also applies in particular if it becomes clear that additional work is required on the delivered goods.
- c) If the customer is in arrears with an agreed payment, Ampack AG has the right to cease carrying out the contract, or to retain goods that are ready for delivery, without any restriction of its statutory rights and without the customer having the right to demand compensation.
- d) If the customer does not adhere to the agreed payment dates, he must, without notice being given, pay interest from the time the payment is due, at a rate of 4% over the rate charged by the St.Gallen Cantonal Bank for 1st new mortgages on residential properties. The customer must also pay the costs of advice and collection. The right to compensation for damages is retained. In addition, Ampack AG also has the right to withdraw from contracts already confirmed, without the customer having the right to claim compensation. If the customer is longer than two weeks late with a payment or provision of an agreed security, all the remaining amount will then become payable.

5. Delivery

- a) Delivery will be made on the date requested by the customer whenever possible. Delivery periods and dates notified/agreed will be maintained whenever possible, but are not binding unless Ampack AG has provided assurance to the contrary in writing. Delays in delivery do not provide reasons for withdrawal or compensation for the customer.
- b) The delivery period begins as soon as the contract has been concluded, the necessary technical documentation from the customer has arrived at Ampack AG, the agreed payments and securities have been provided and the necessary official permits have been awarded. The delivery period has been maintained if the goods have arrived with the customer before the end of the period. The delivery period will be extended accordingly if the delivery period is not maintained due to circumstances such as epidemics, natural events, mobilisation, war, insurrection, employment conflicts, boycotts, accidents, significant interruptions to operations or official measures. The delivery period will also be extended if the customer makes changes to the order after it has been awarded, or is late carrying out his statutory obligations, particularly if he does not deliver the necessary documents in good time, does not provide the agreed payments or securities or is late carrying out work that he must undertake.
- c) If there is a delay in acceptance, the customer has a duty to compensate Ampack AG for any resulting damages. In such cases, Ampack AG has the right to deposit the purchased item at the cost and risk of the customer or to withdraw from the contract, with compensation from the customer for the damages thus suffered by Ampack AG. In particular, delay in acceptance applies if the customer unlawfully refuses to accept the purchased item because of delays in delivery.

6. Packaging

The packaging will not be taken back.

7. Unpaid advice

Any unpaid technical advice is provided to the best of our knowledge, but excludes any pre-contract or contractual obligations. Ampack AG does not accept any responsibility for this advice, particularly for the correctness of the content of the advice.

8. Transfer of risk and insurance

The risk is transferred to the customer at the time of delivery at the latest. This also applies in the case of partial deliveries, or if Ampack AG has taken responsibility for other costs, e.g. despatch costs, or carriage and installation.

9. Place of fulfilment

The place of fulfilment for all the contractual services is Rorschacherberg/Switzerland, unless otherwise agreed.

10. Acceptance

The customer must check the goods and the associated delivery papers immediately upon receipt. Any claims regarding uncorrected defects (differences of quantity/damage) will only be accepted within 24 hours, or within 6 days in the case of hidden defects.

11. Claims for defects/Guarantee

- a) The guarantee period lasts for 6 months from delivery to the customer. The guarantee from Ampack AG depends on the fulfilment by the customer of the agreed payment conditions by the agreed times.
- b) Ampack AG has a duty to correct or replace, at its own decision and as quickly as possible, the delivery or any part of the delivery that is proven to be damaged or unusable as a result of defective material or implementation, at the written request of the customer. The right to cancellation or reduction of the sale is excluded. If a delivery is still affected by defects, despite replacement delivery or corrective work, Ampack AG can withdraw the defective delivery and repay the payments received. Material that has been replaced will remain the property of Ampack AG. The guarantee period (Clause 11 above) will not be extended as a result of individual correction work or replacement deliveries.
- c) The guarantee and liability provisions exclude damages that cannot be proved to be the result of poor material from Ampack AG or defective workmanship, but might for example be the result of normal wear and tear, defective maintenance, neglect of the instructions for use, excessive stress, unsuitable operational methods, construction or installation work not carried out by Ampack AG or other reasons for which Ampack AG is not responsible.
- d) The only guaranteed characteristics are those specified as such in the specifications.

12. Consequential damages

The entitlements of the customer to the guarantee and liability provisions are definitively regulated by these Terms and Conditions. Subject to the obligatory statutory provisions, the customer has no contractual or non-contractual entitlements to compensation for damages such as loss of production, loss of benefits, loss of contracts, loss of earnings or other direct or indirect damages.

13. Retention of ownership

- a) The purchased goods will remain the property of Ampack AG until full payment of the purchase price, including interest and any other costs has been made, and Ampack AG will be empowered by the customer to register retention of ownership in accordance with Art. 715 ZGB (the Swiss Civil Code).
- b) The customer may not sell or pledge, lend or hire out the purchased goods until full payment of the purchase price, including interest and any other costs has been made. In addition, the customer has a duty not to remove the purchase goods from his warehouse and/or his national territory without the express written permission of Ampack AG. If any pledge, retention or arrest should occur, the customer must refer to the retention of the right of ownership and advise Ampack AG immediately.
- c) The customer has a duty to collaborate at his own cost with any necessary measures to protect the property of Ampack AG.
- d) During the period of retention of ownership, Ampack AG has the right to conclude an insurance policy for its own benefit, at the cost of the customer, to cover all the risks that come into consideration.

14. Declaration of consent under data protection law

Ampack AG processes data on the customer (incl. company name, address, personal details of the contacts within the company and other business-related data) and data on the customer's activities (incl. orders and complaints) in the context of the business relationship and for marketing purposes. Data processing includes the collection, storage, use, transmission, disclosure and deletion of data. These are performed with all due care and in accordance with Swiss data protection rules. By placing an order, the customer agrees that the customer data obtained by Ampack AG may be used directly and/or indirectly in the context of the business relationship and for marketing purposes, and may be transmitted and disclosed to business partners of Ampack AG (e.g. suppliers) for the same purposes. The customer expressly agrees that the data will also be transmitted to and processed in countries where laws regarding the processing of personal information may be less stringent than those of Switzerland. The customer's consent is given voluntarily and the customer has the right to revoke the consent to receive advertising at any time. The remaining data is required to be processed for business purposes within the context of the business relationship (including disclosure to third parties).

15. Place of jurisdiction / Applicable law

- a) The sole place of jurisdiction for any disputes arising from the relationship between the relevant parties is Rorschacherberg/Switzerland. At its own wish, Ampack AG is also entitled to lodge claims against the customer at the customer's headquarters.
- b) The legal relationship is subject to Swiss law. The validity of the United Nations Convention on Contracts for the International Sale of Goods dated 1st April 1980 (the Vienna Sale of Goods law) is excluded. In the event of any matter of interpretation or any other disagreement, the German language version of these Terms and Conditions are definitive.

CH-Rorschacherberg, December 2025

® Ampatex, Ampatop, Ampacoll, Sisalex, Ampaphon and Idikell are registered trademarks of Ampack AG. The General Terms and Conditions of Business of Ampack AG will apply. All the information provided is based on the current status of technology. Any reproduction or re-print replaces the information provided in this brochure. Obtain information about the specific technological status at the time you place your order.

© Ampack AG, Rorschacherberg, 12.2025

The building shell experts. Since 1946.

Ampack AG

Seebleichstrasse 50
CH-9404 Rorschacherberg
T +41 71 858 38 00
ampack@ampack.ch
www.ampack.biz



@ampacken

