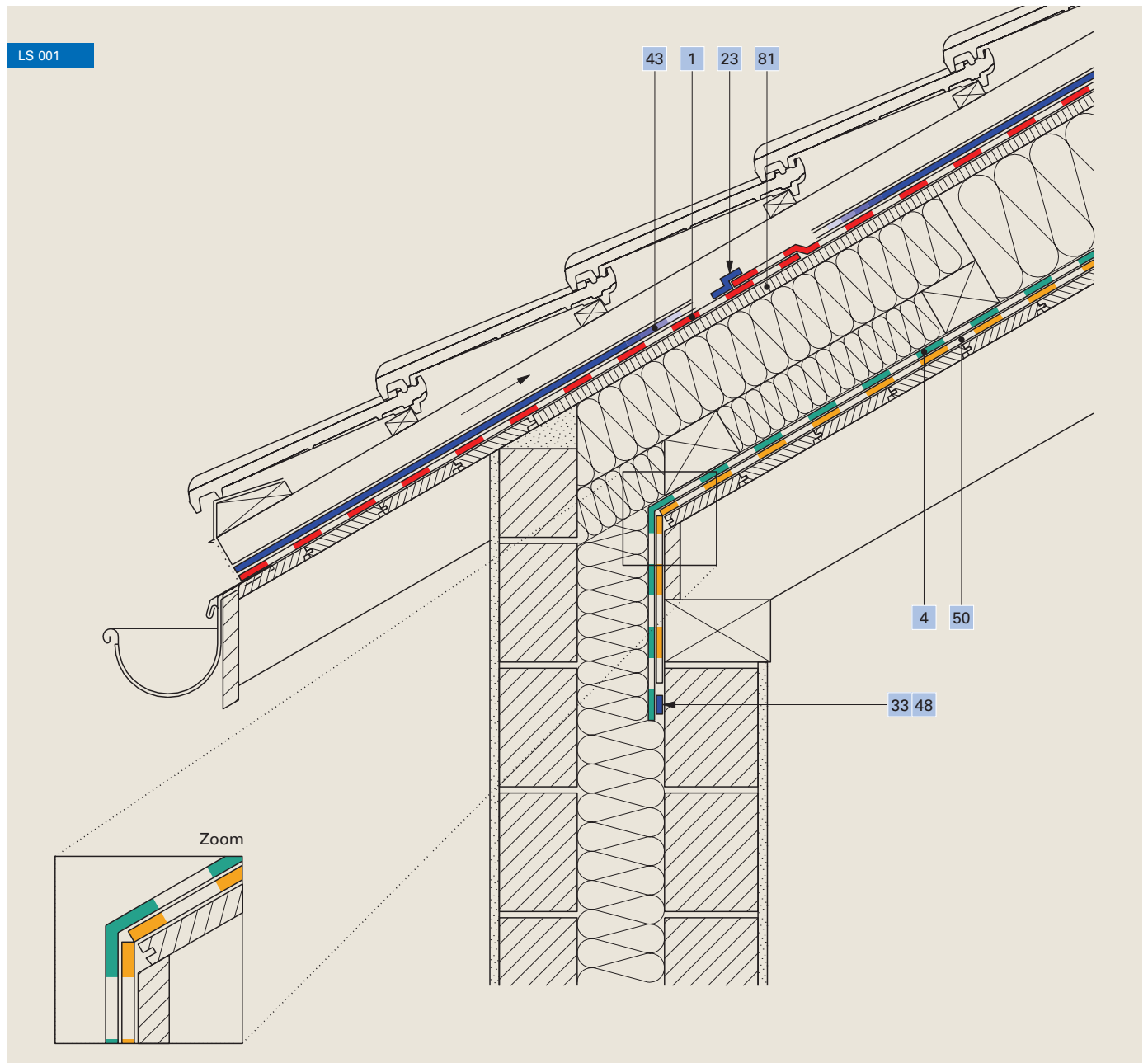


Noise protection, roof

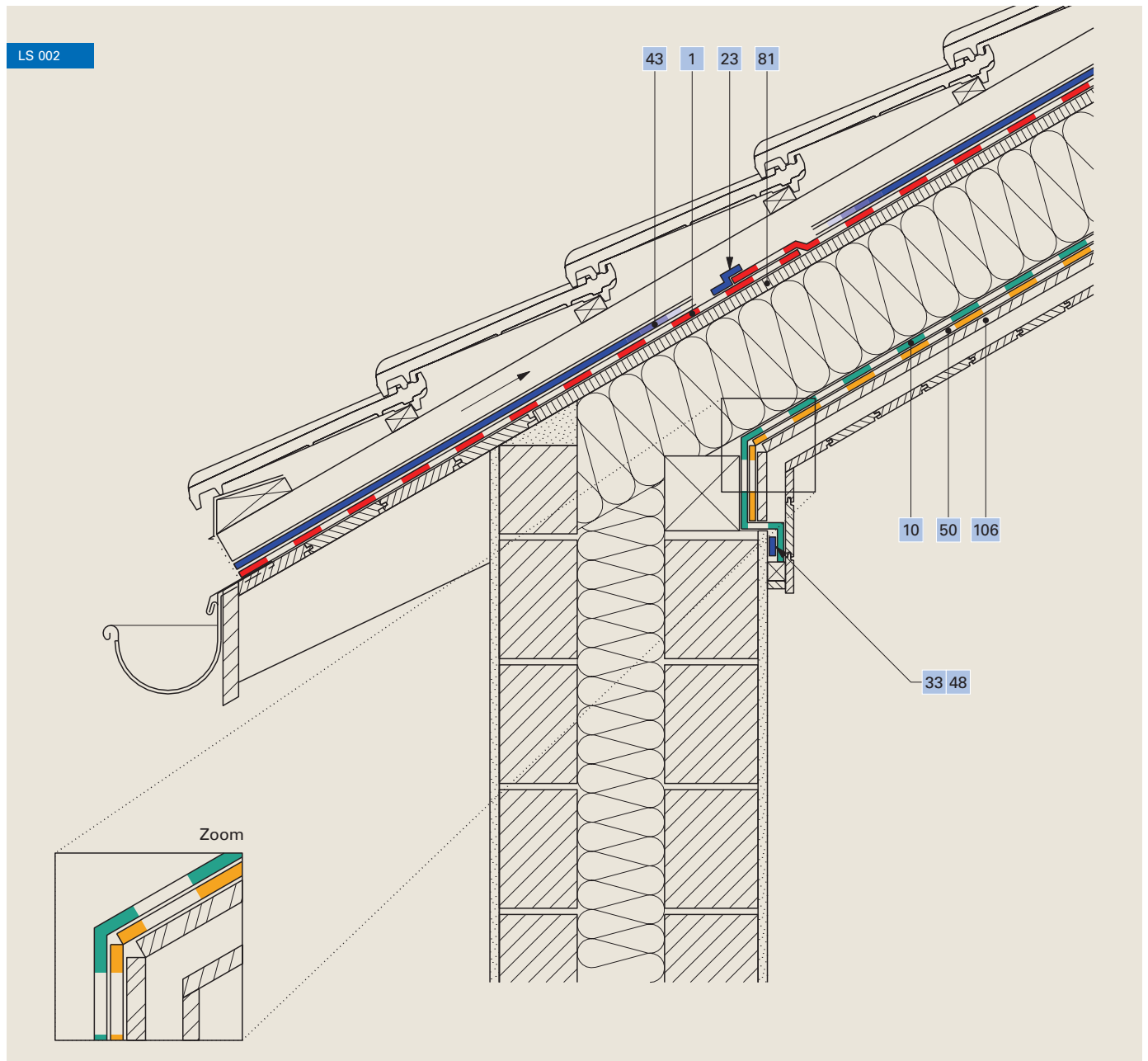
Against external noise, rafter-mounted insulation



1	Roof membrane Ampatop® Protecta (plus)	43	Nail sealing tape Ampacoll® ND.Band
4	Formwork membrane Ampatex® Solero	50	Heavy foil Idikell® M 4021/05
23	Adhesive tape Ampacoll® XT, 60 mm	81	Soft fibreboard
33 48	Adhesive tape Ampacoll® BK 530, 15 mm / Ampacoll® Primax		

Noise protection, roof

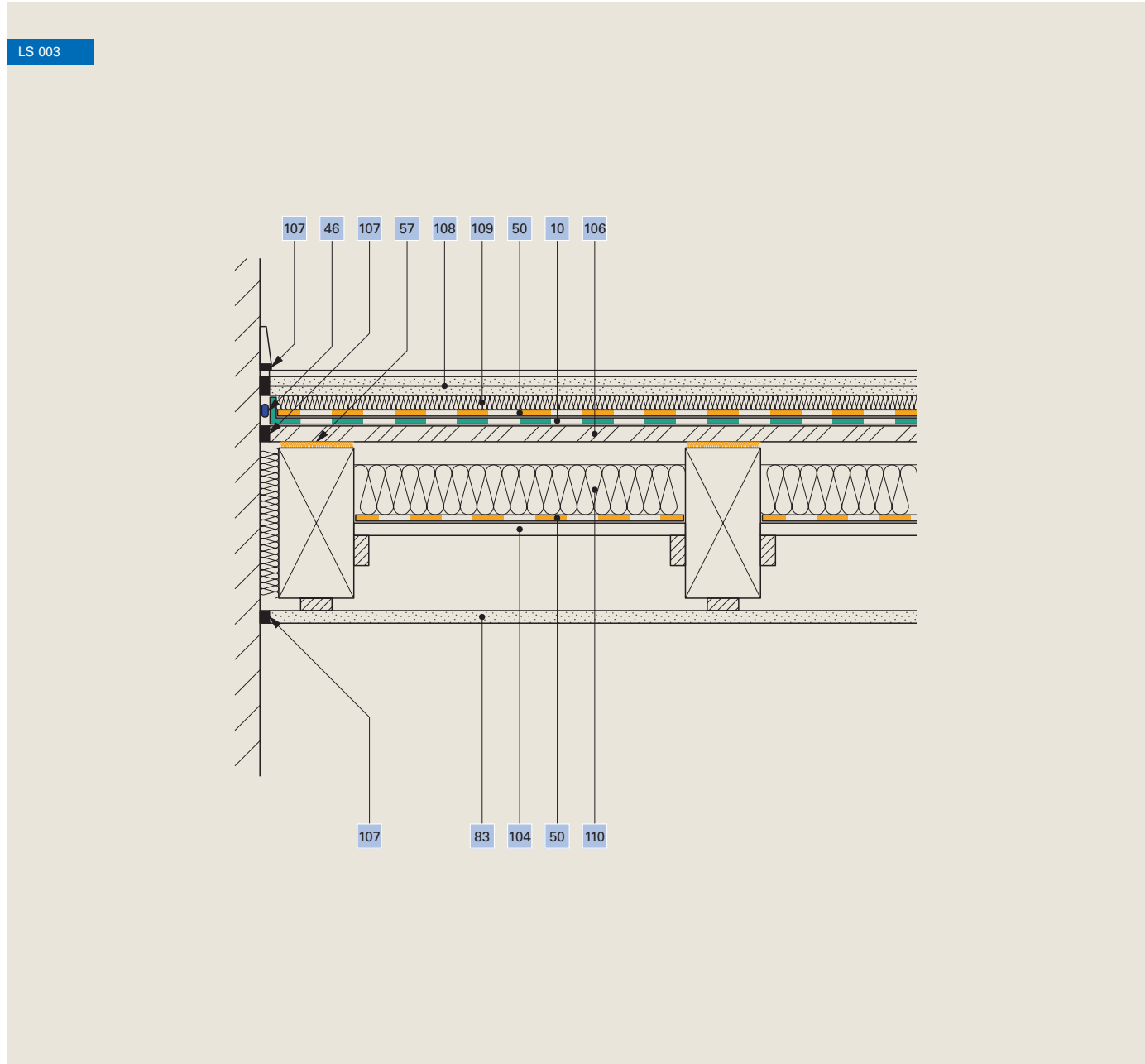
Against external noise, insulation mounted between rafters



1	Roof membrane Ampatop® Protecta (plus)	43	Nail sealing tape Ampacoll® ND.Band
10	Vapour check Ampatex® DB 90	50	Heavy foil Idikell® M 4021/05
23	Adhesive tape Ampacoll® XT, 60 mm	81	Soft fibreboard
33 48	Adhesive tape Ampacoll® BK 530, 15 mm / Ampacoll® Primax	106	Chipboard

Noise protection, ceiling

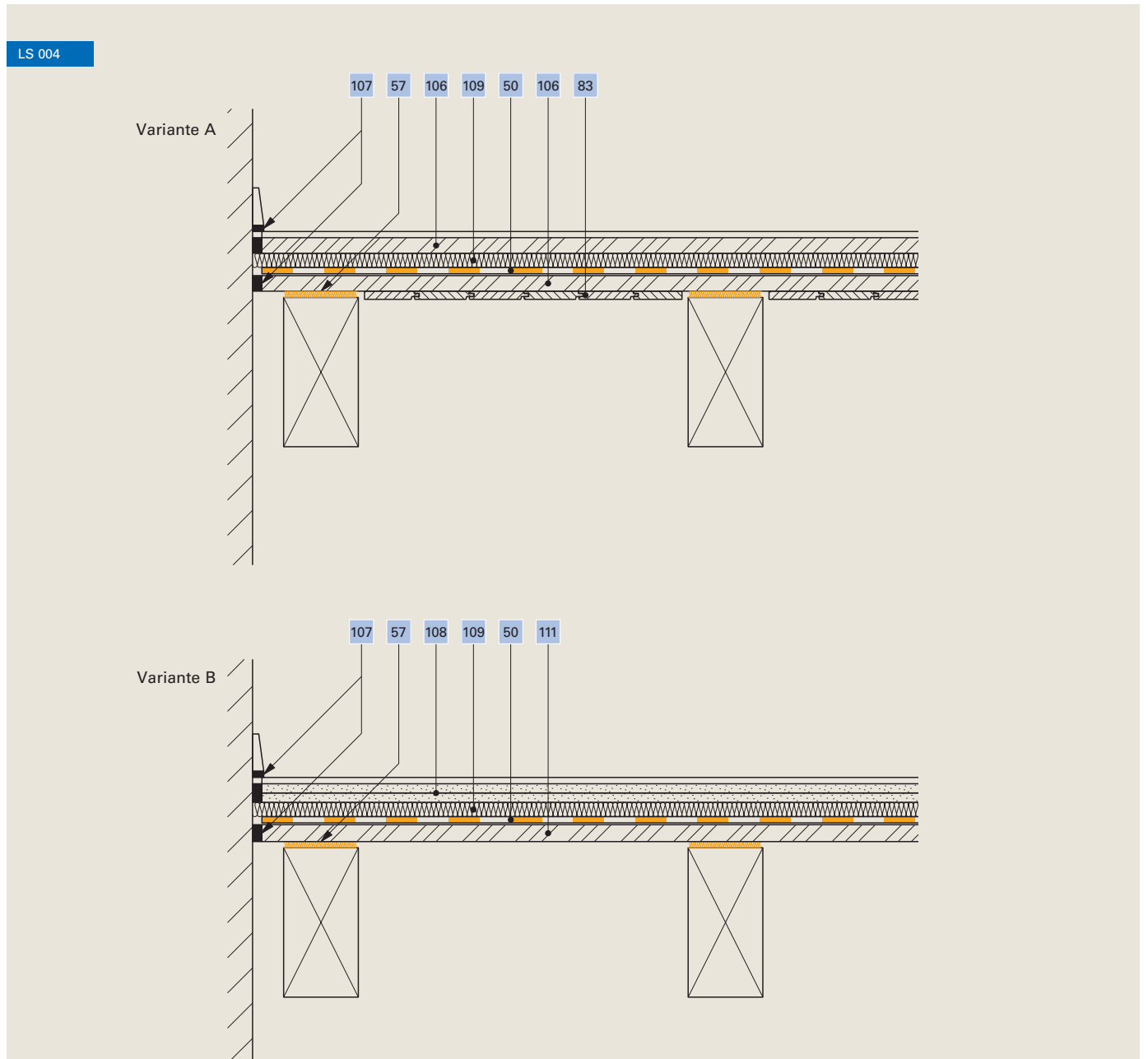
Beam location with added false ceiling



10	Airtight layer Ampatex® DB 90	106	Chipboard
46	Edge connection adhesive Ampacoll® RA	107	Permanently-elastic cemented joint
50	Heavy foil Idikell® M 4021/05	108	2-layer plasterboard
57	Felt strip 5 mm Ampaphon® Z 101/05 , 60 mm	109	Impact noise insulation
83	Inner cladding	110	Cavity insulation
104	Sliding floor		

Noise protection, ceiling

Beam location visible

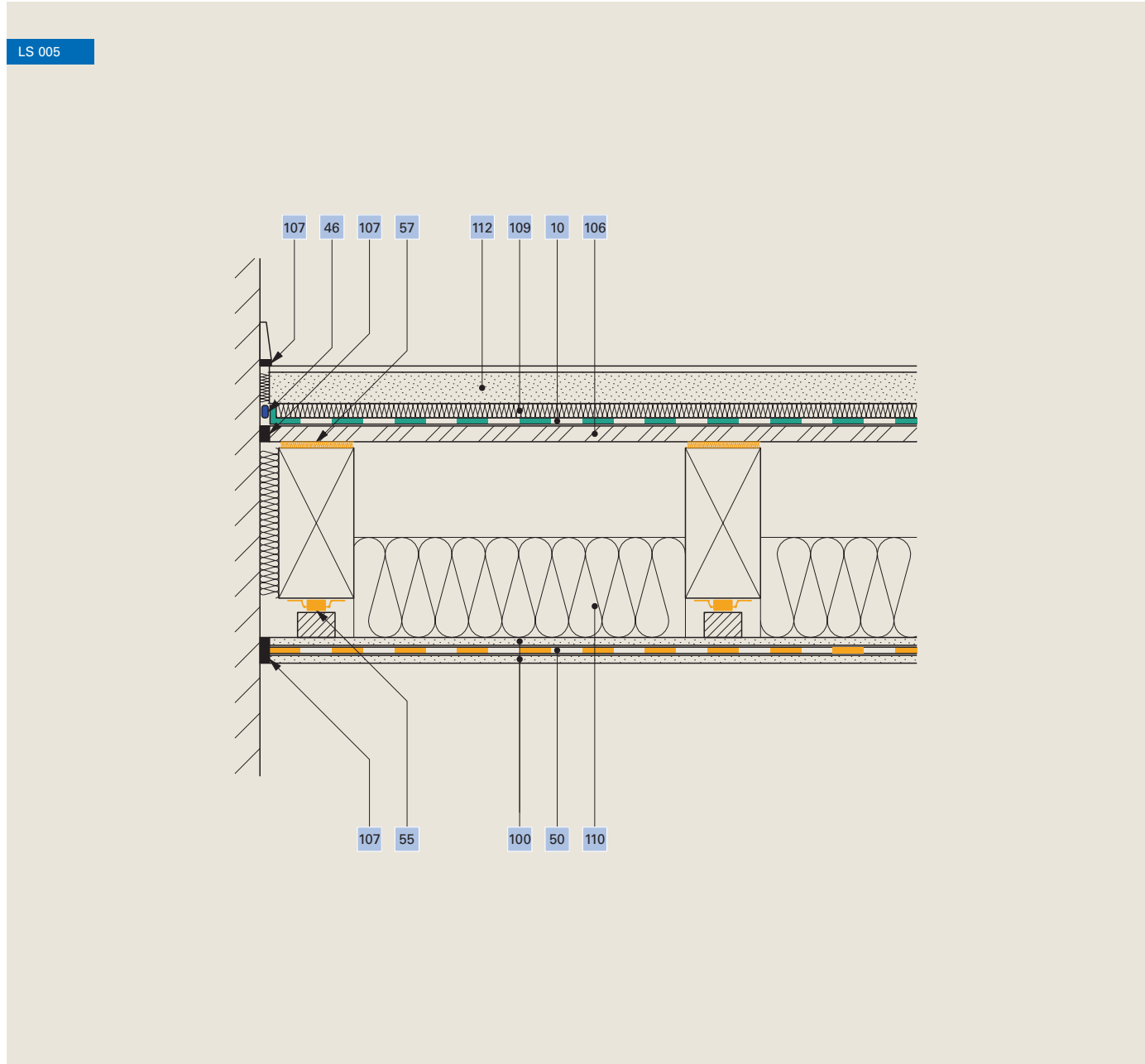


50	Heavy foil Idikell® M 4021/05	107	Permanently-elastic cemented joint
57	Felt strip 5 mm Ampaphon® Z 101/05 , 60 mm	108	2-layer plasterboard
83	Inner cladding	109	Impact noise insulation
106	Chipboard	111	3-layer panel

Notice: Wall rafter has no contact with wall

Noise protection, ceiling

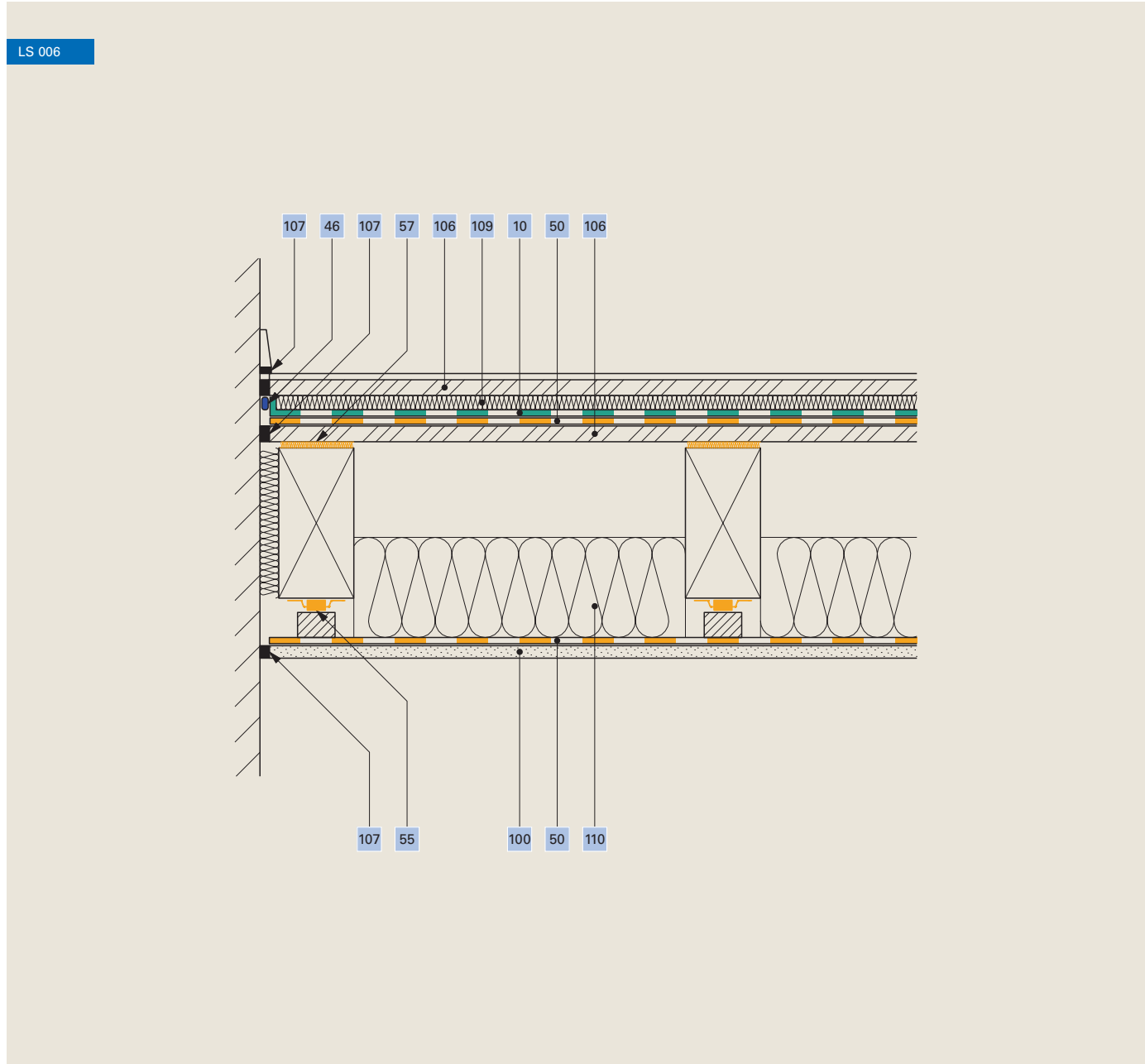
With vibration element, apartment separation ceiling, flow screed



10	Airtight layer Ampatex® DB 90	106	Chipboard
46	Edge connection adhesive Ampacoll® RA	107	Permanently-elastic cemented joint
50	Heavy foil Idikell® M 4021/05	109	Impact noise insulation
55	Vibration element Ampaphon® Z 600	110	Cavity insulation
57	Felt strip 5 mm Ampaphon® Z 101/05, 60 mm	112	Flow screed
100	Plasterboard 12,5 mm		

Noise protection, ceiling

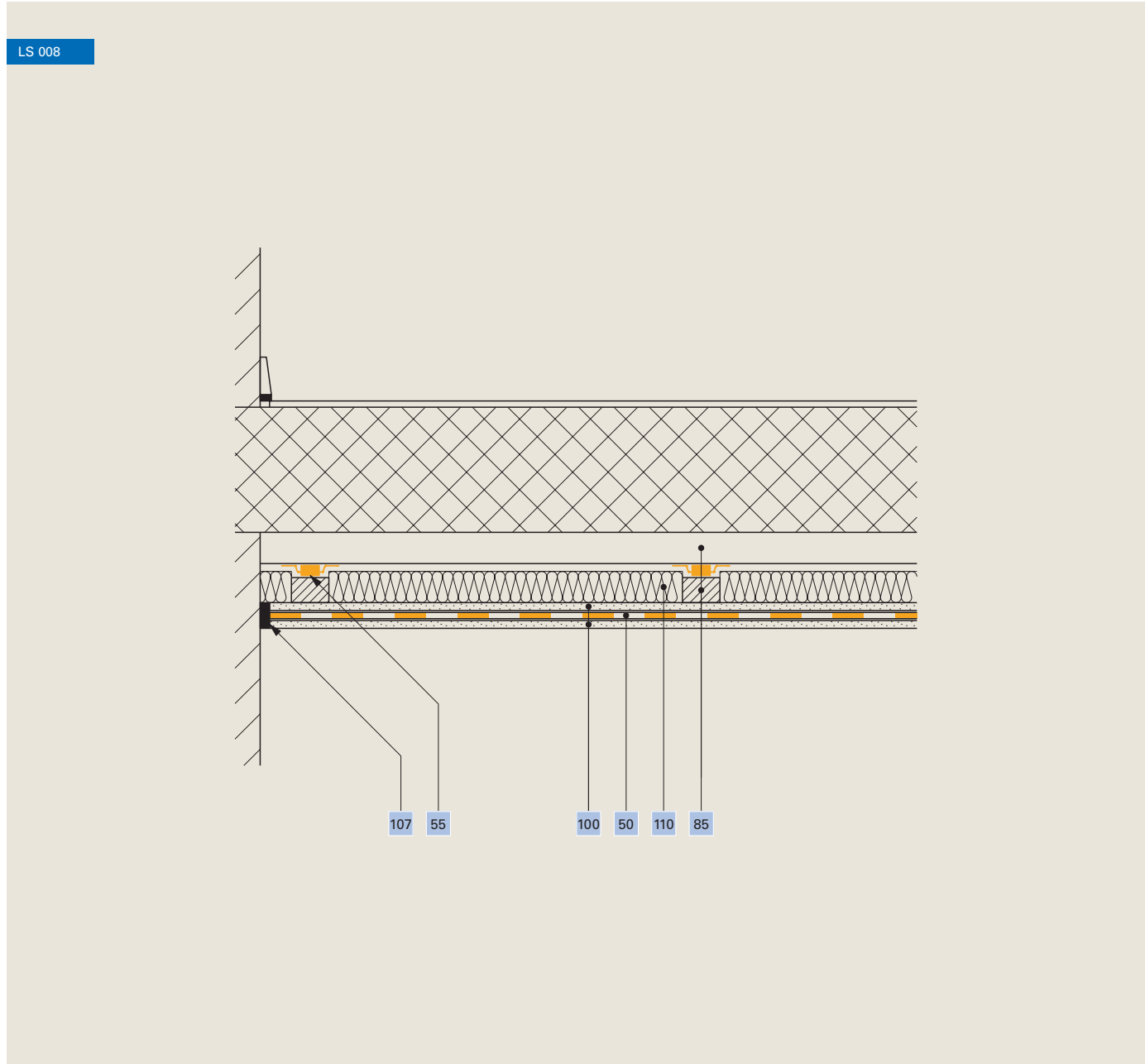
With vibration element, apartment separation ceiling, wood base



10	Airtight layer Ampatex® DB 90	100	Plasterboard 18 – 20 mm
46	Edge connection adhesive Ampacoll® RA	106	Chipboard
50	Heavy foil Idikell® M 4021/05	107	Permanently-elastic cemented joint
55	Vibration element Ampaphon® Z 600	109	Impact noise insulation
57	Felt strip 5 mm Ampaphon® Z 101/05, 60 mm	110	Cavity insulation

Noise protection, ceiling

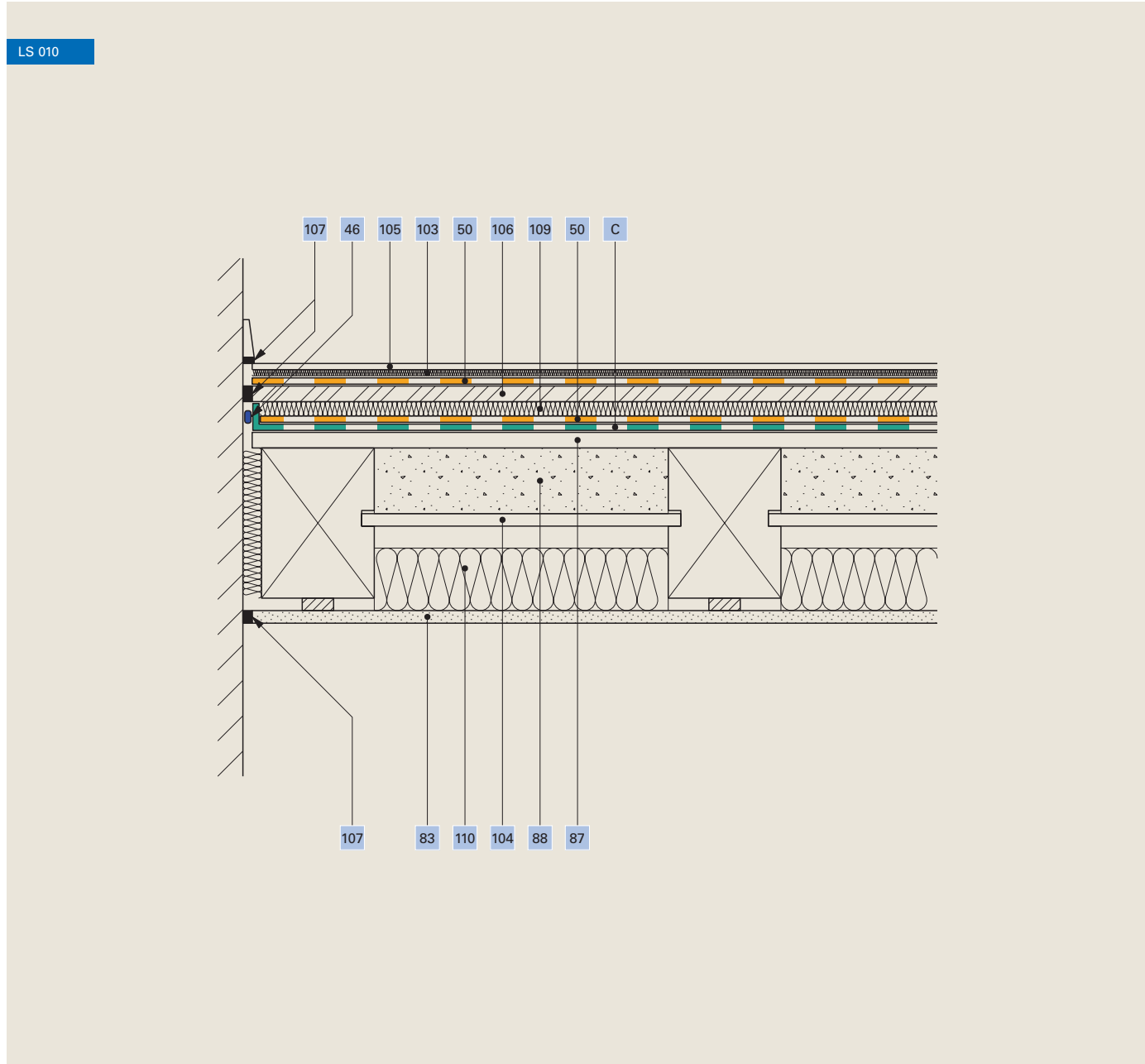
Improvement to concrete ceiling, vibration element



50	Heavy foil Idikell® M 4021/05	100	Plasterboard 12,5 mm
55	Vibration element Ampaphon® Z 600	107	Permanently-elastic cemented joint
85	Batten	110	Cavity insulation

Noise protection, ceiling

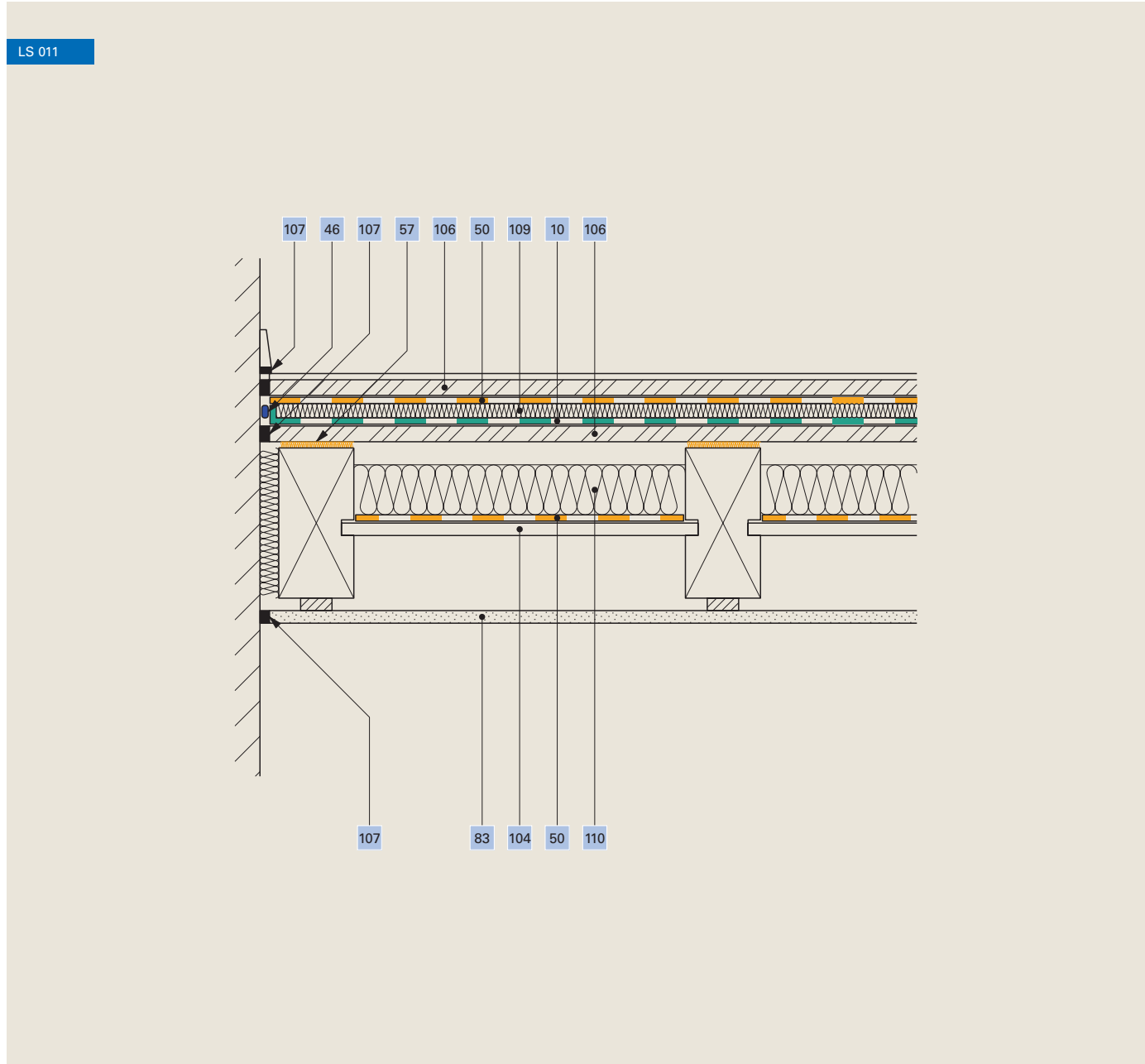
Improvement to base structure with Idikell®



10	Airtight layer Ampatex® DB 90	104	Sliding floor
46	Edge connection adhesive Ampacoll® RA	105	Floating base surface
50	Heavy foil Idikell® M 4021/05	106	Chipboard
83	Inner cladding	107	Permanently-elastic cemented joint
87	Formwork	109	Impact noise insulation
88	Cinders	110	Cavity insulation
103	Felt underlay		

Noise protection, ceiling, renovation from above

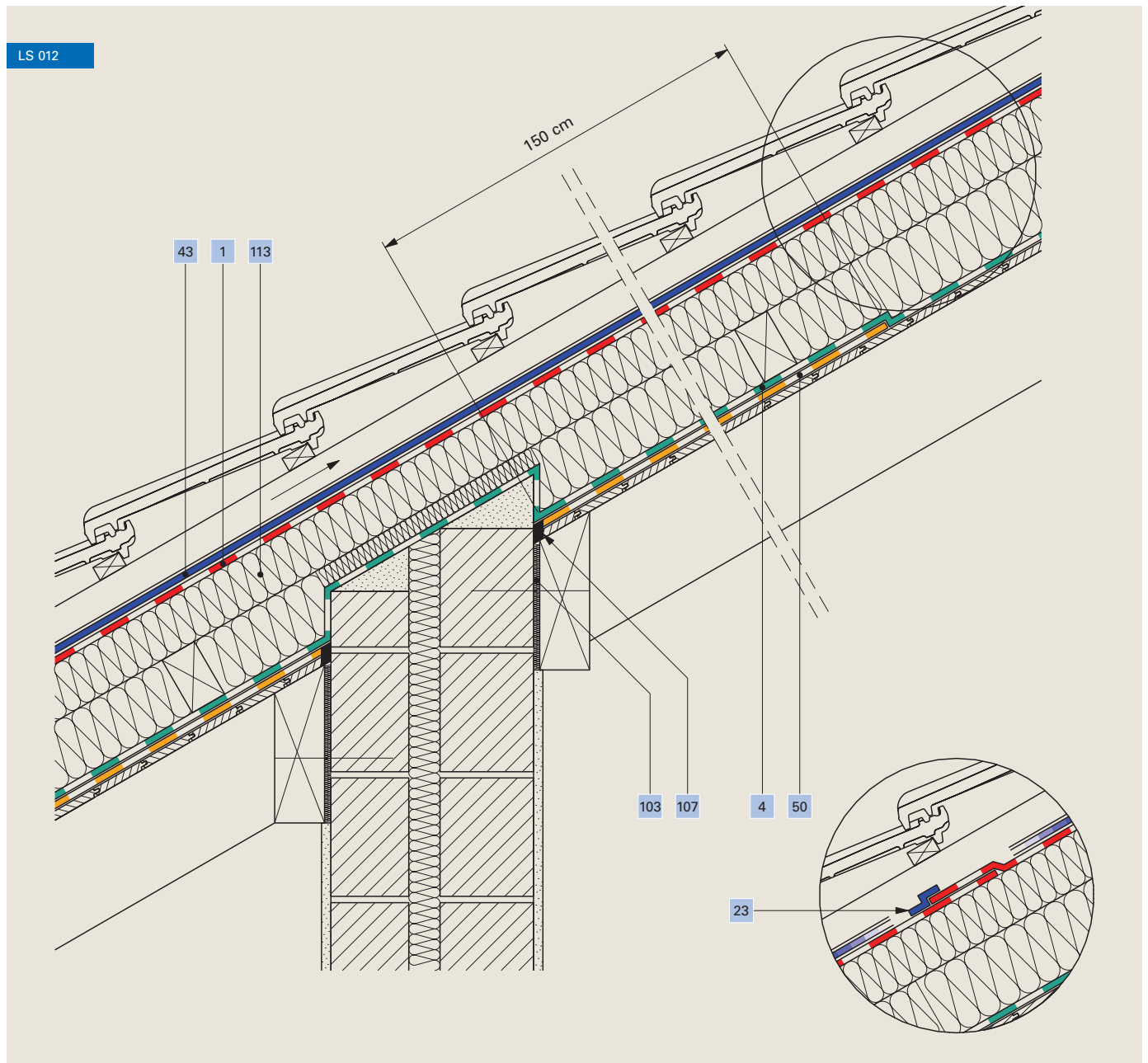
Beam location with sliding floor, apartment separation ceiling



10	Airtight layer Ampatex® DB 90	104	Existing sliding floor
46	Edge connection adhesive Ampacoll® RA	106	Chipboard
50	Heavy foil Idikell® M 4021/05	107	Permanently-elastic cemented joint
57	Felt strip 5 mm Ampaphon® Z 101/05 , 60 mm	109	Impact noise insulation
83	Existing inner cladding	110	Cavity insulation

Noise protection, building separation wall

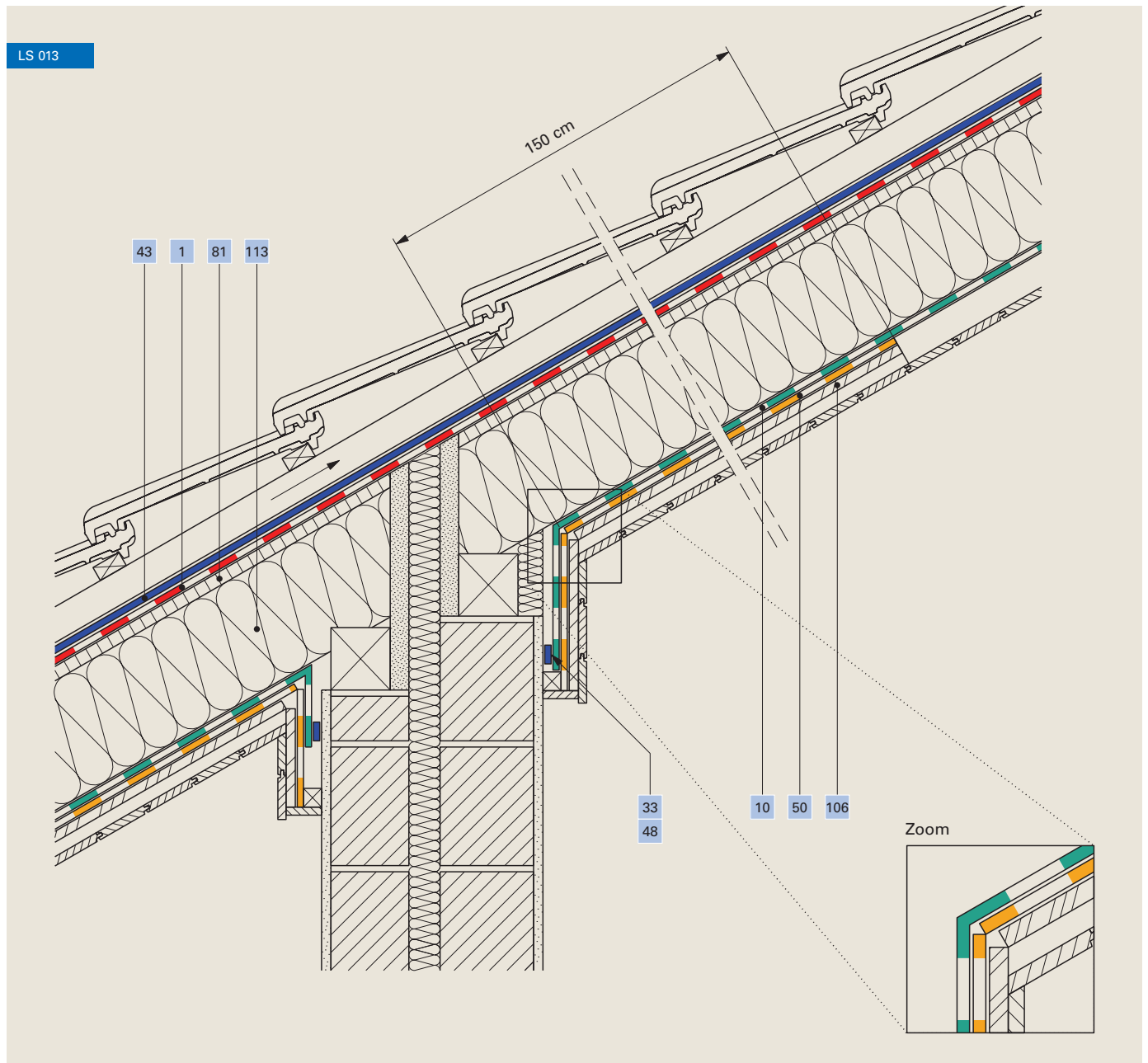
Parallel to ridge, rafter-mounted insulation



1	Roof membrane Ampatop® Protecta (plus)	50	Heavy foil Idikell® M 4021/05
4	Formwork membrane Ampatex® Solero	103	Felt underlay
23	Adhesive tape Ampacoll® XT, 60 mm	107	Permanently-elastic cemented joint
43	Nail sealing tape Ampacoll® ND.Band	113	Mineral fibre insulation to meet fire protection requirements

Noise protection, building separation wall

Parallel to ridge, insulation mounted between rafters



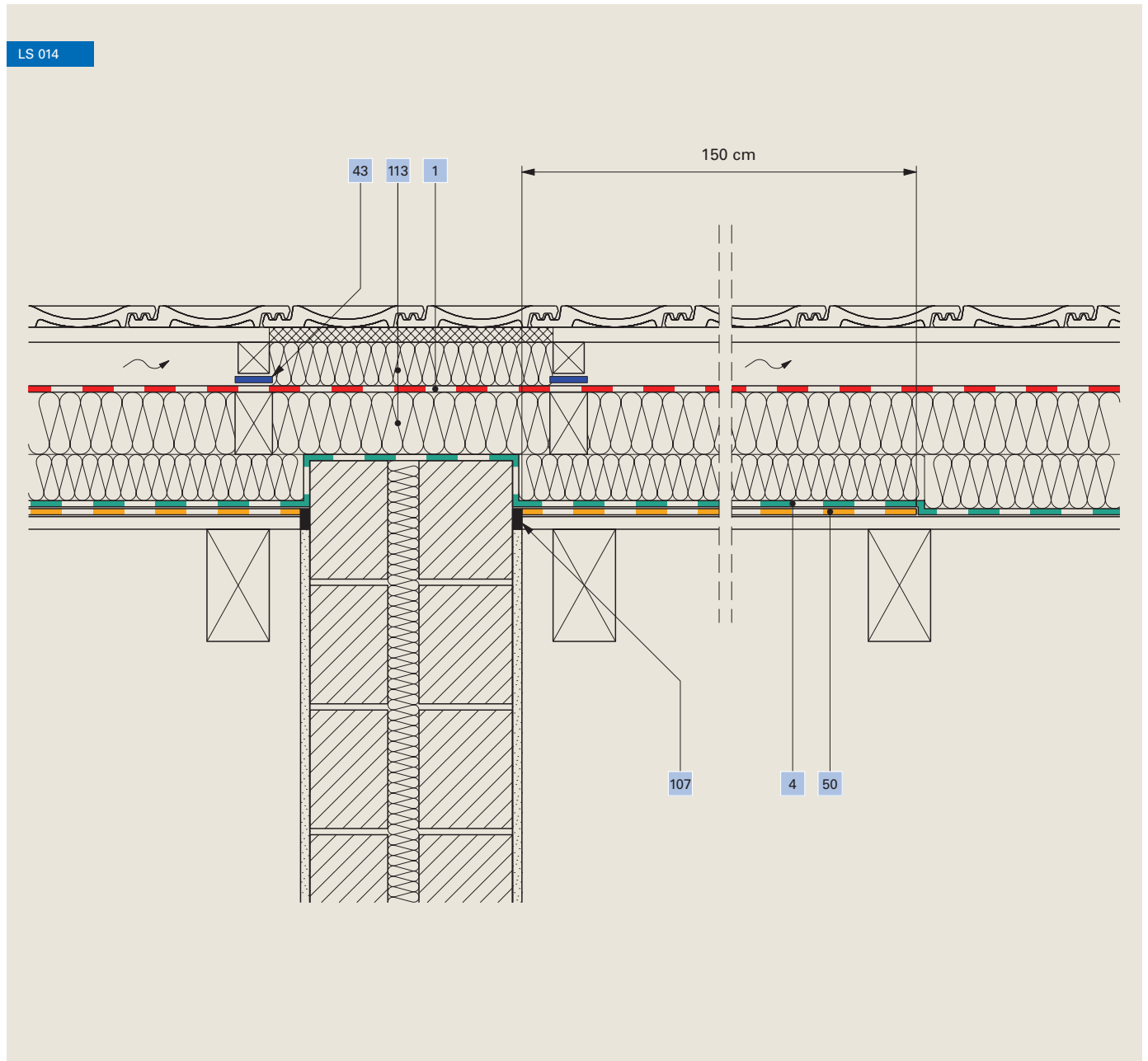
1	Roof membrane Ampatop® Protecta (plus)	50	Heavy foil Idikell® M 4021/05
10	Vapour check Ampatex® DB 90	81	Soft fibreboard
33	Adhesive tape Ampacoll® BK 530, 15 mm / Ampacoll® Primax	106	Chipboard
48		113	Mineral fibre insulation to meet fire protection requirements
43	Nail sealing tape Ampacoll® ND.Band		

Ampack Switzerland:
+41 71 858 38 00
www.ampack.eu



Noise protection, building separation wall

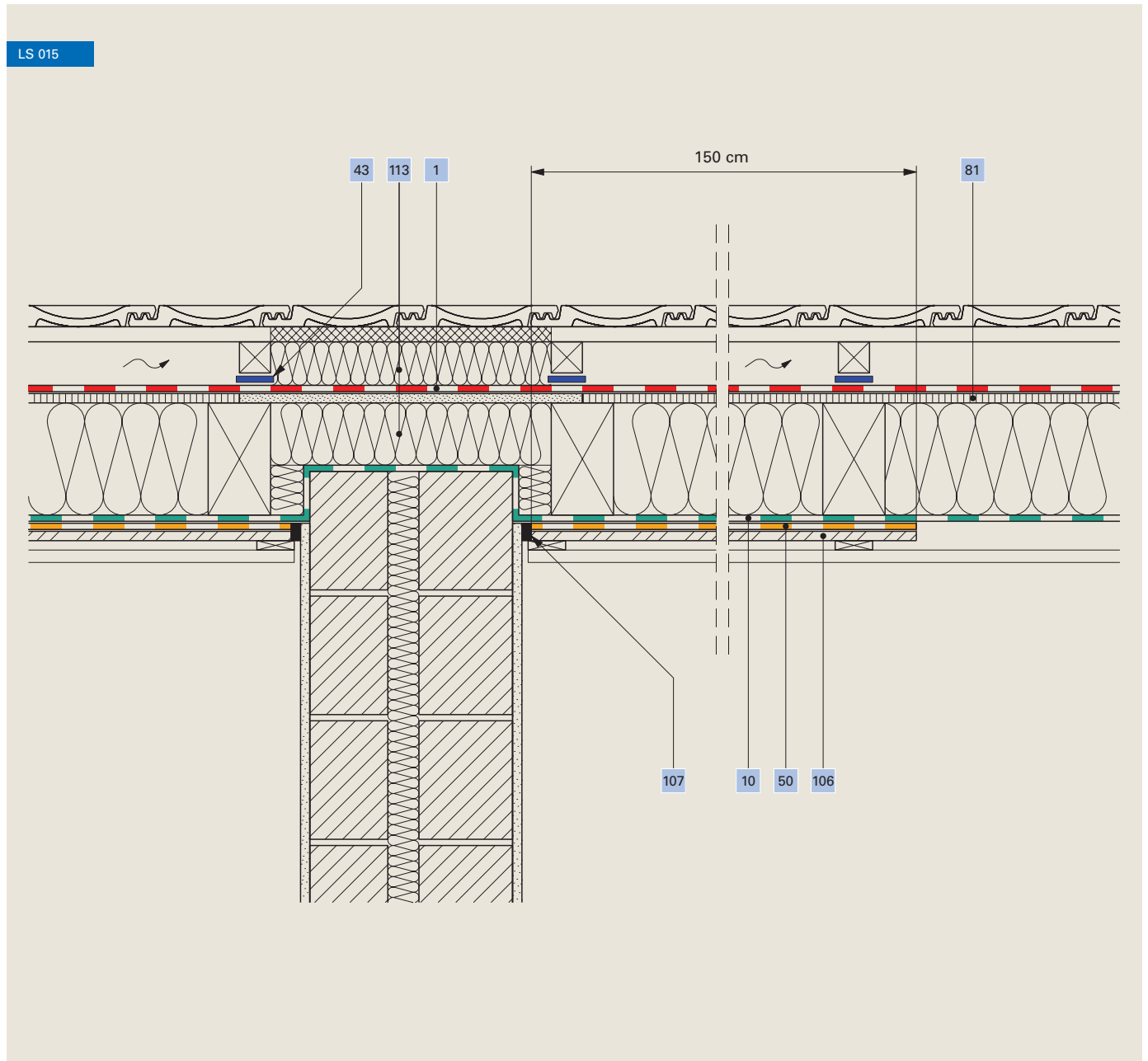
Right angle to ridge, rafter-mounted insulation



1	Roof membrane Ampatop® Protecta (plus)	50	Heavy foil Idikell® M 4021/05
4	Formwork membrane Ampatex® Solero	107	Permanently-elastic cemented joint
43	Nail sealing tape Ampacoll® ND.Band	113	Mineral fibre insulation to meet fire protection requirements

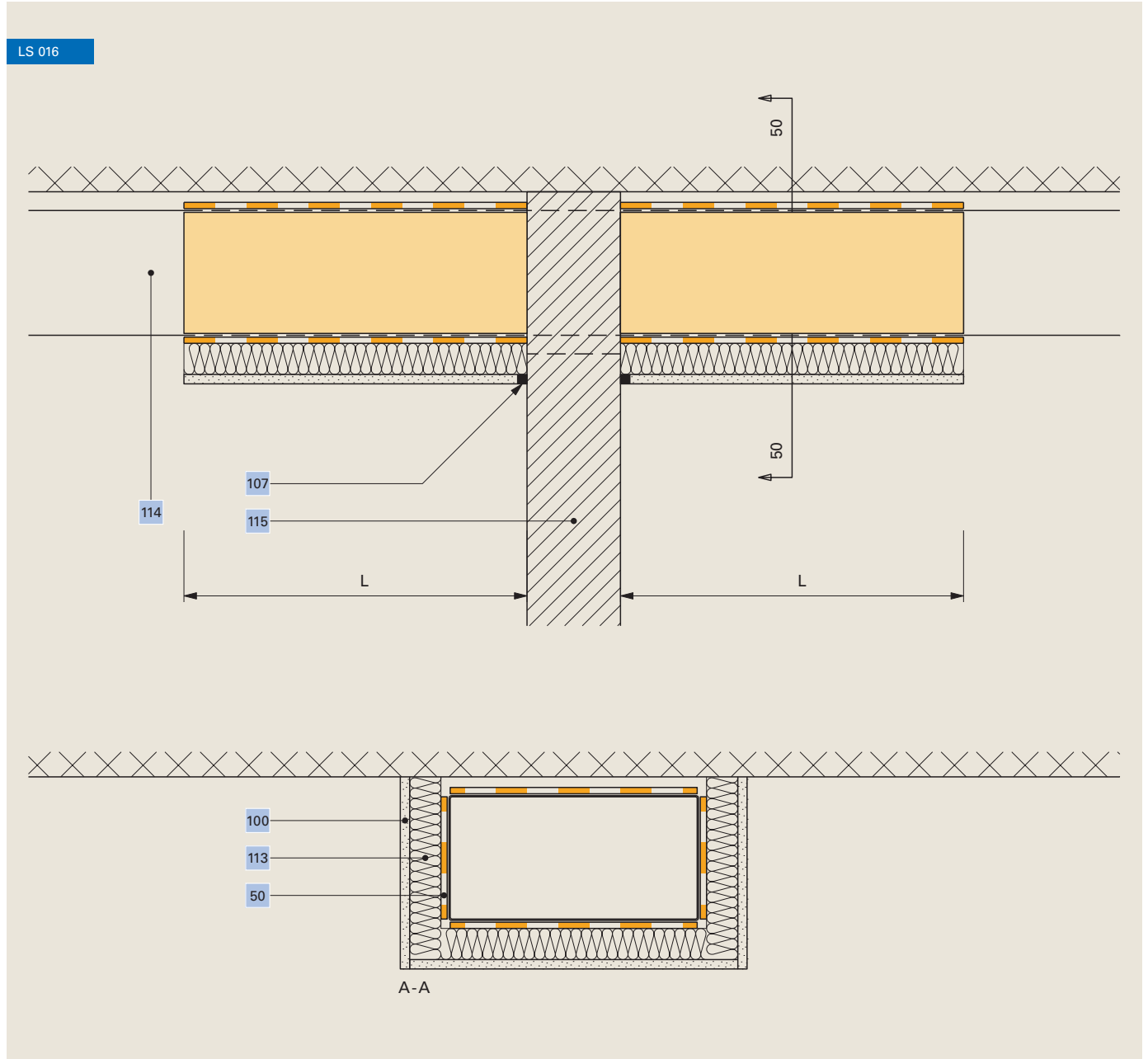
Noise protection, building separation wall

Right angle to ridge, insulation mounted between the rafters



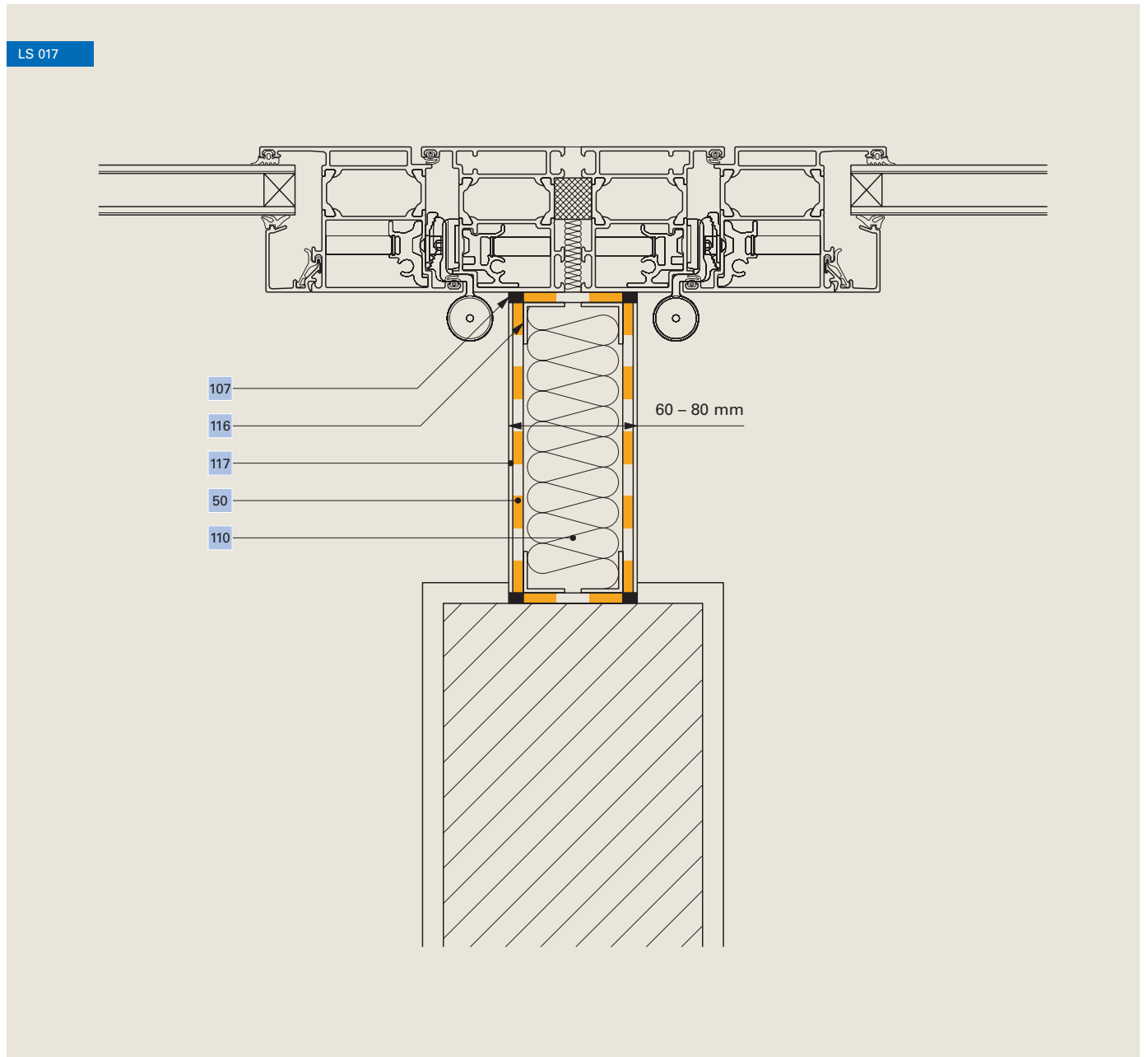
1	Roof membrane Ampatop® Protecta (plus)	81	Soft fibreboard
10	Vapour check Ampatex® DB 90	106	Chipboard
43	Nail sealing tape Ampacoll® ND.Band	107	Permanently-elastic cemented joint
50	Heavy foil Idikell® M 4021/05	113	Mineral fibre insulation to meet fire protection requirements

Noise protection, ventilation duct



50	Heavy foil Idikell® M 4021/05 , single or double layer	113	Mineral fibre insulation 30 – 50 mm
100	Plasterboard or aluminium sheet	114	Ventilation duct
107	Permanently-elastic cemented joint	115	Dividing wall

Noise protection, metal façade on separation wall



50 Heavy foil **Idikell® M 4021/05**, single or double layer

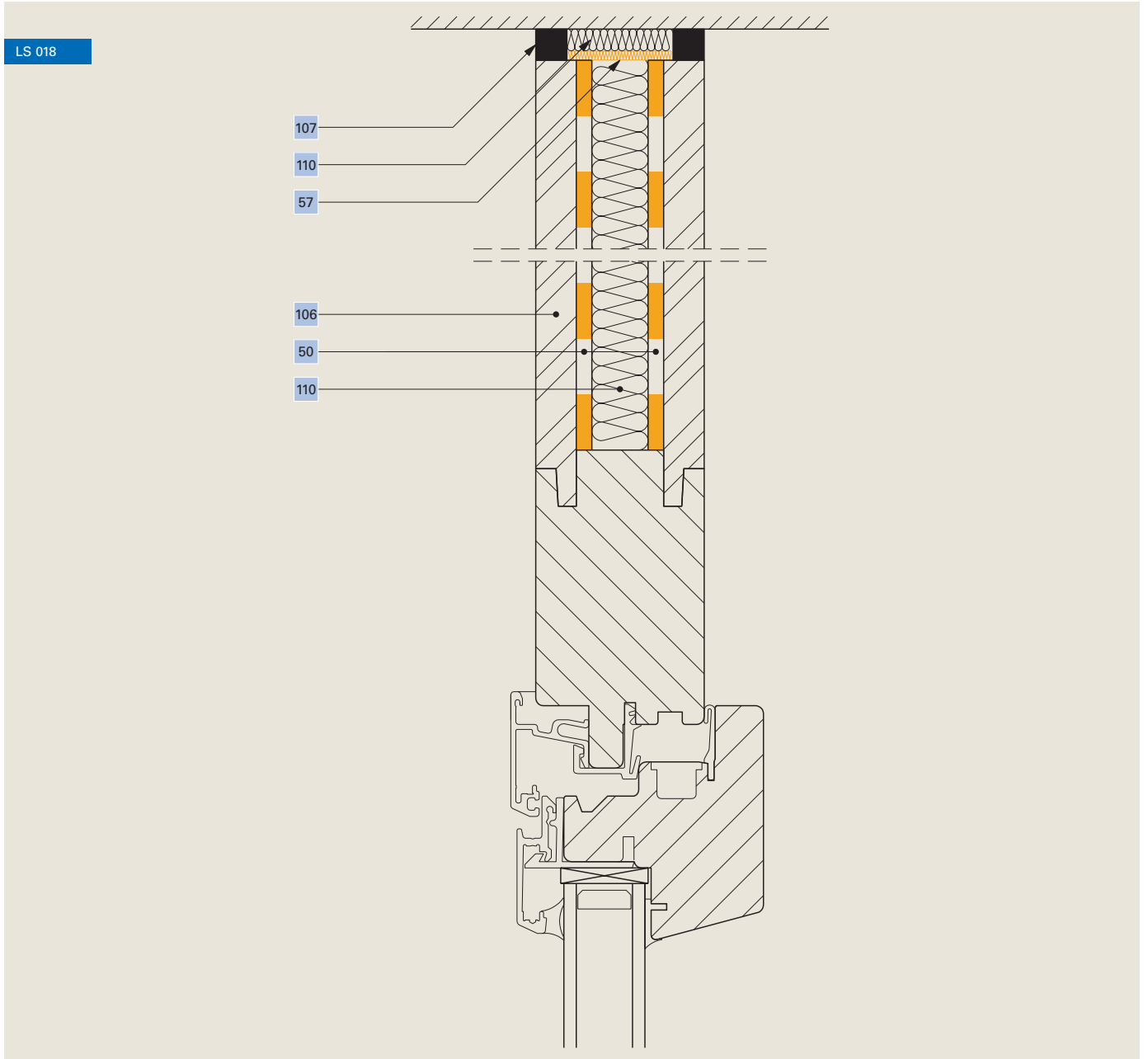
107 Permanently-elastic cemented joint

110 Cavity insulation

116 Fixing angle

117 Steel or aluminium sheet

Noise protection, frame extension



50 Heavy foil **Idikell® M 4021/05**

57 Felt strip 5 mm **Ampaphon® Z 101/05**, 40 mm

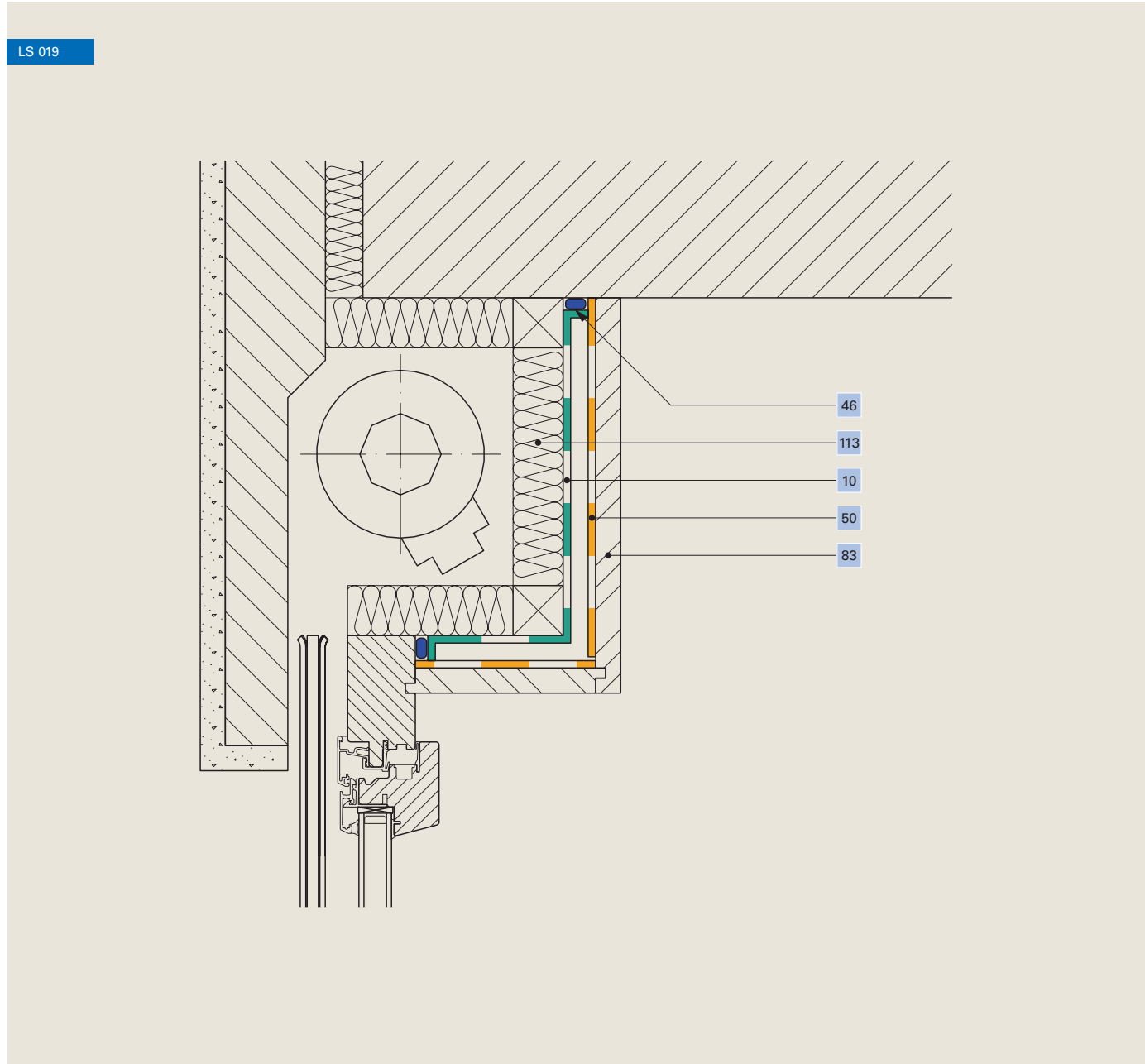
106 Chipboard

107 Permanently-elastic cemented joint

110 Cavity insulation

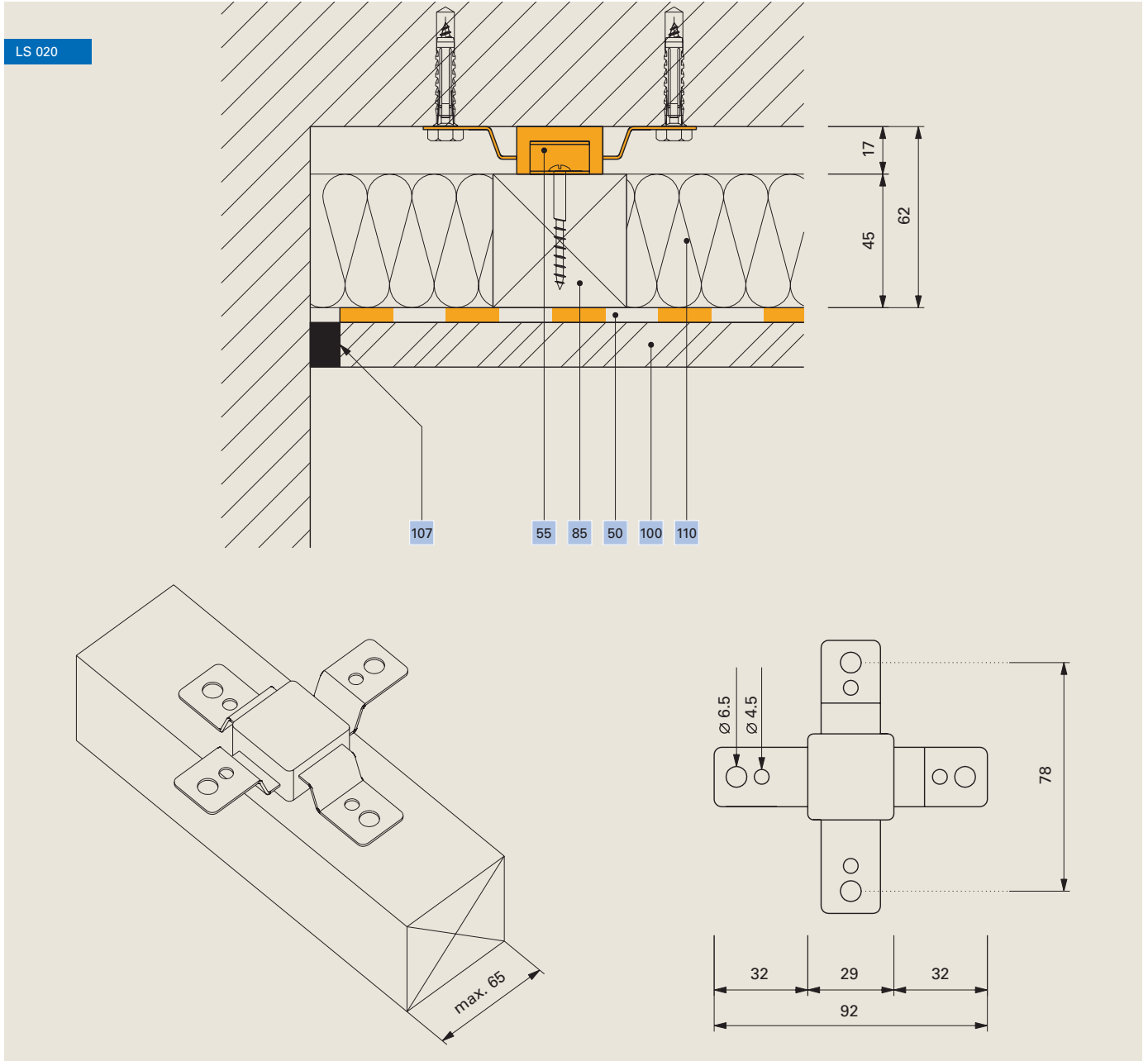
Noise protection, roller blind box

Renovation



10	Airtight layer Ampatex® DB 90	83	Inner cladding
46	Edge connection adhesive Ampacoll® RA	113	Mineral fibre insulation
50	Heavy foil Idikell® M 4021/05		

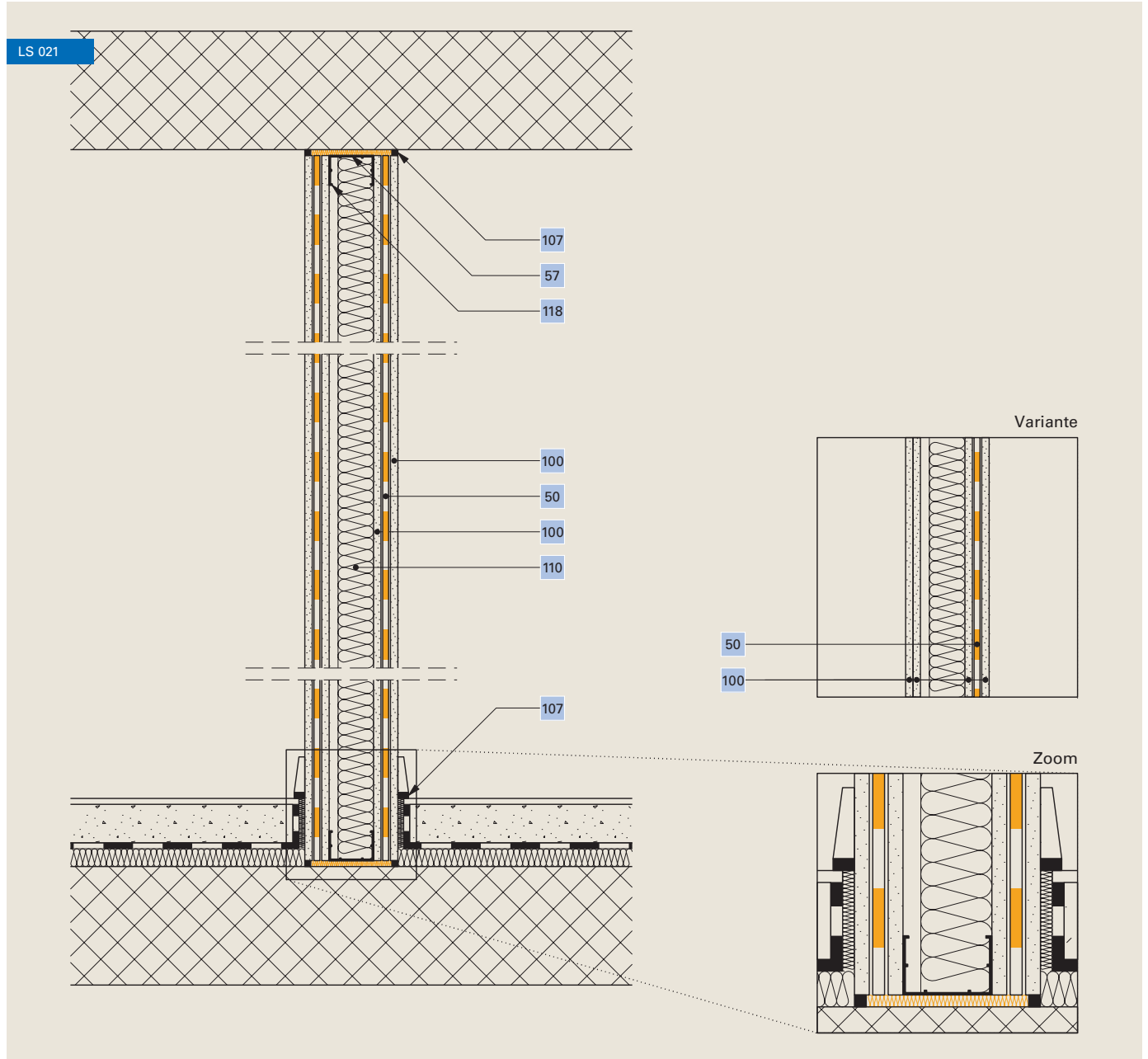
Noise protection, vibration element



50	Heavy foil Idikell® M 4021/05	100	Plasterboard or chipboard
55	Vibration element Ampaphon® Z 600	107	Permanently-elastic cemented joint
85	Batten	110	Cavity insulation

Noise protection, separation wall

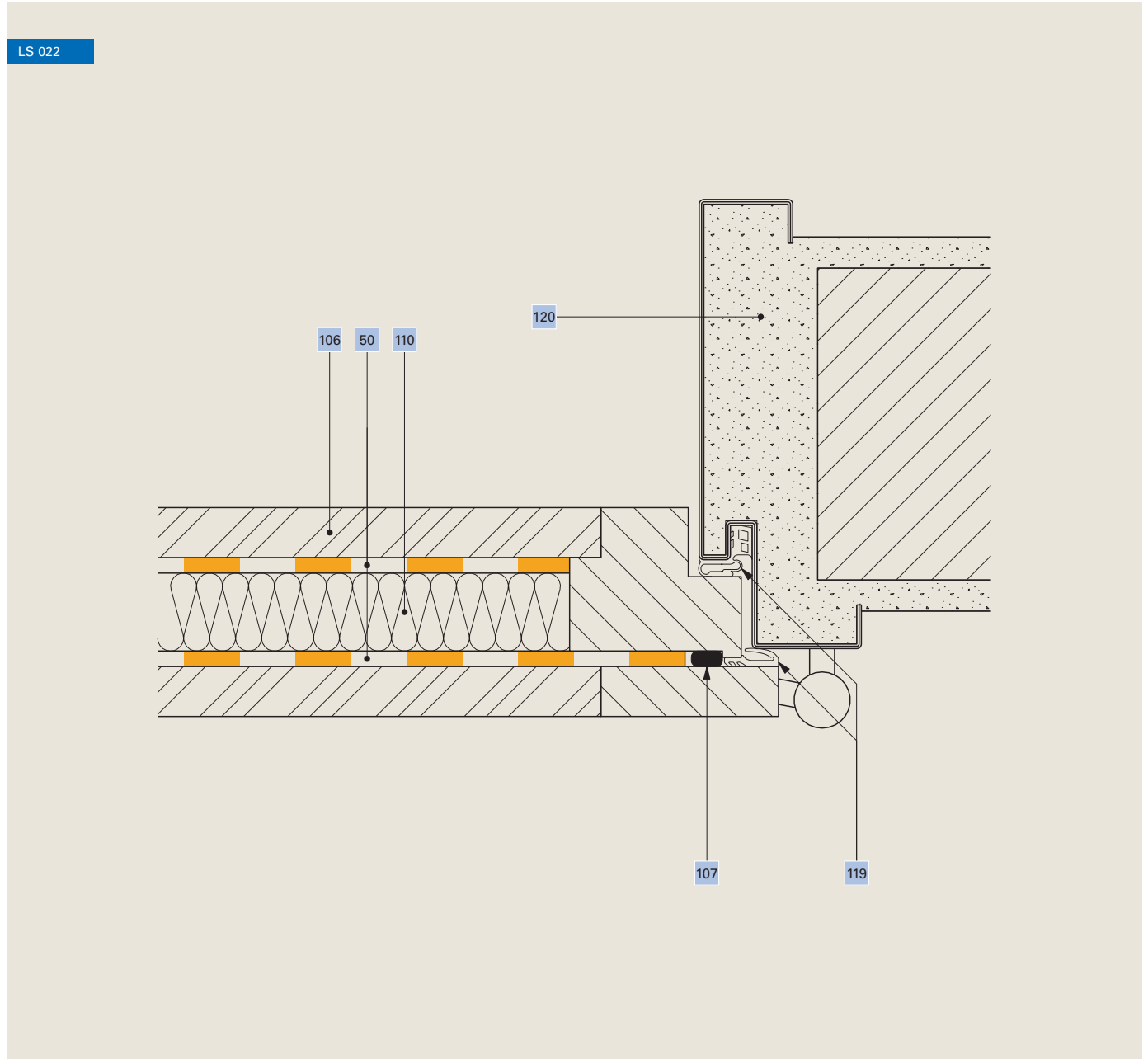
Higher requirements, C-profile



50	Heavy foil Idikell® M 4021/05	107	Permanently-elastic cemented joint
57	Felt strip 5 mm Ampaphon® Z 101/05, 60 mm	110	Cavity insulation
100	Plasterboard 12,5 mm	118	Metal stand 75 mm

Noise protection, door

With metal frame

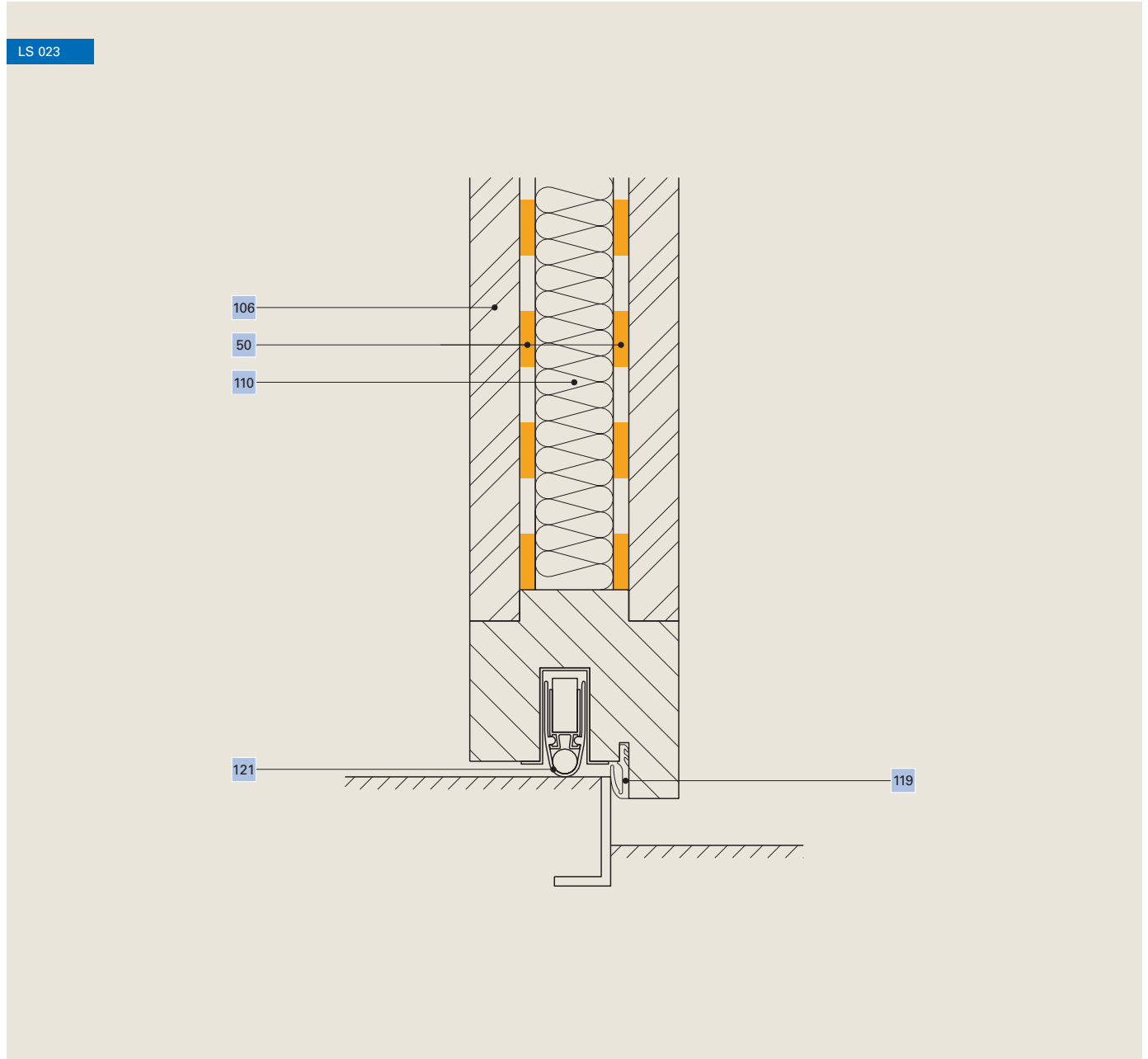


50	Heavy foil Idikell® M 4021/05	110	Cavity insulation
106	Chipboard	119	Surrounding double lip seal
107	Permanently-elastic cemented joint	120	Cement grouting

Important: The rebate-side shell can only be fixed point-by-point, at intervals of at least 400 mm.

Noise protection, door

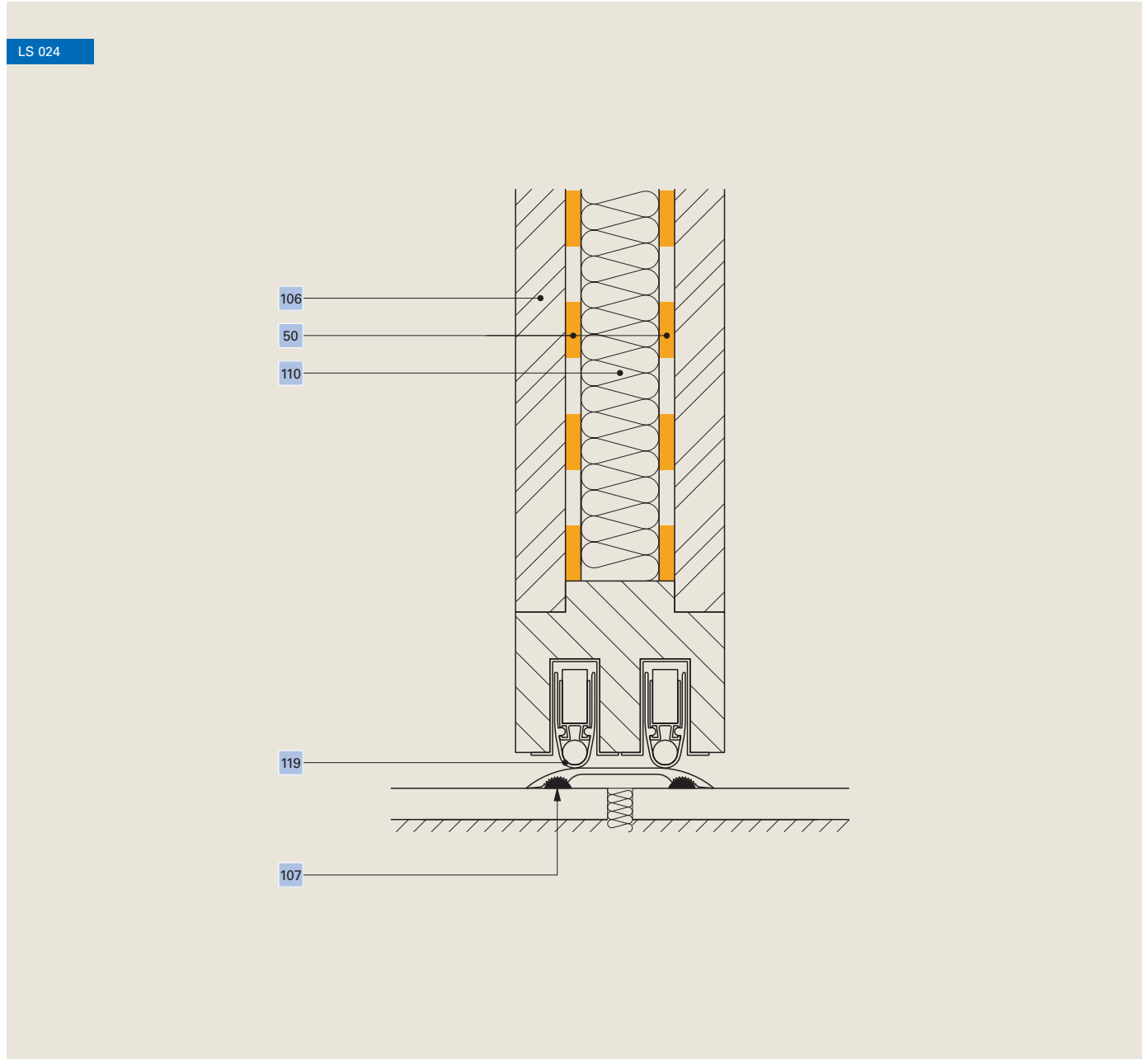
With sill



50	Heavy foil Idikell® M 4021/05	119	Lip seal and double seal on the other three rebates
106	Chipboard	121	Sinkage seal
110	Cavity insulation		

Noise protection, door

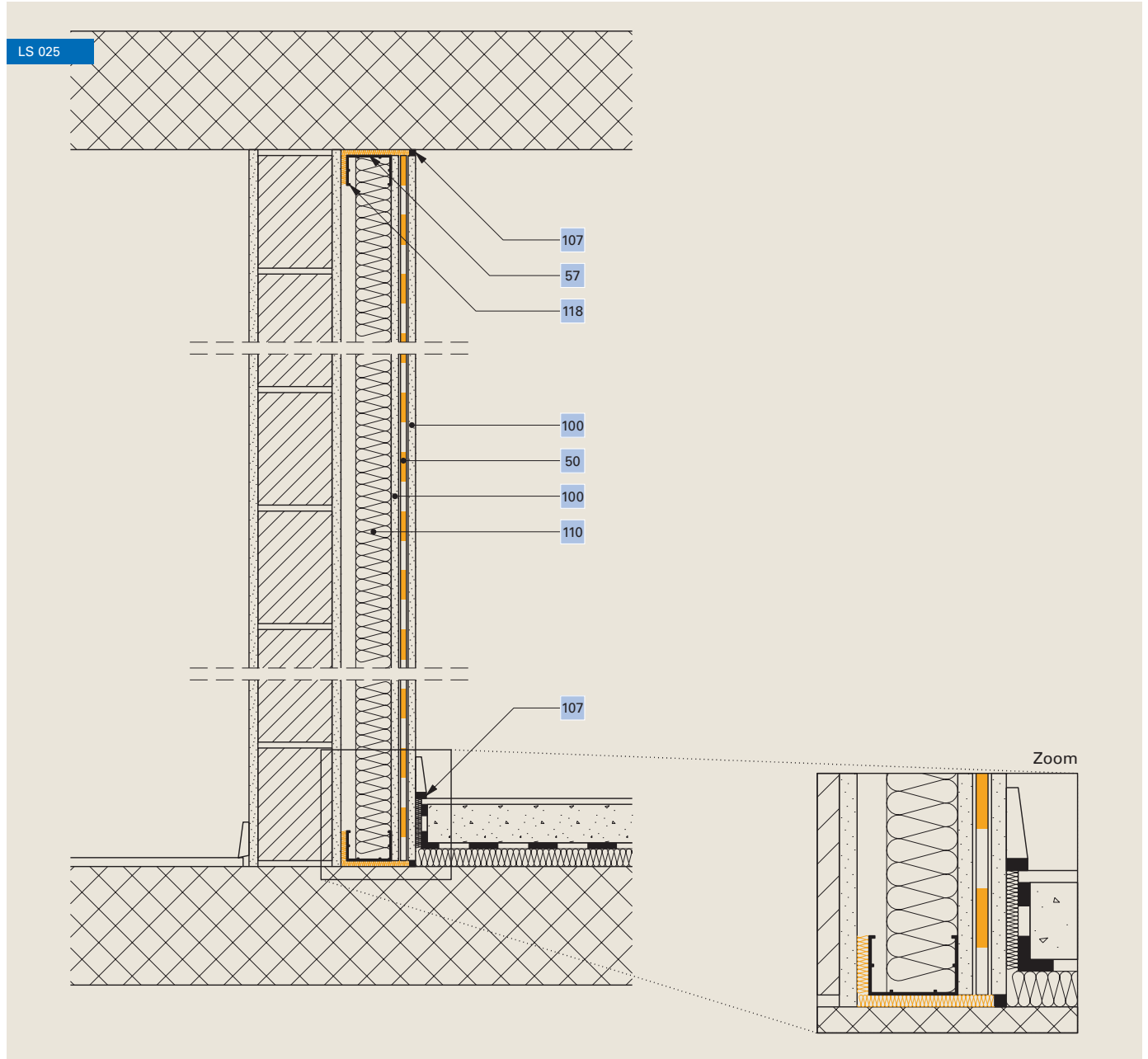
Without sill



50	Heavy foil Idikell® M 4021/05	110	Cavity insulation
106	Chipboard	119	Double sinkage seal and double seal on the other three rebates
107	Permanently-elastic cemented joint		

Noise protection, ancillary panel

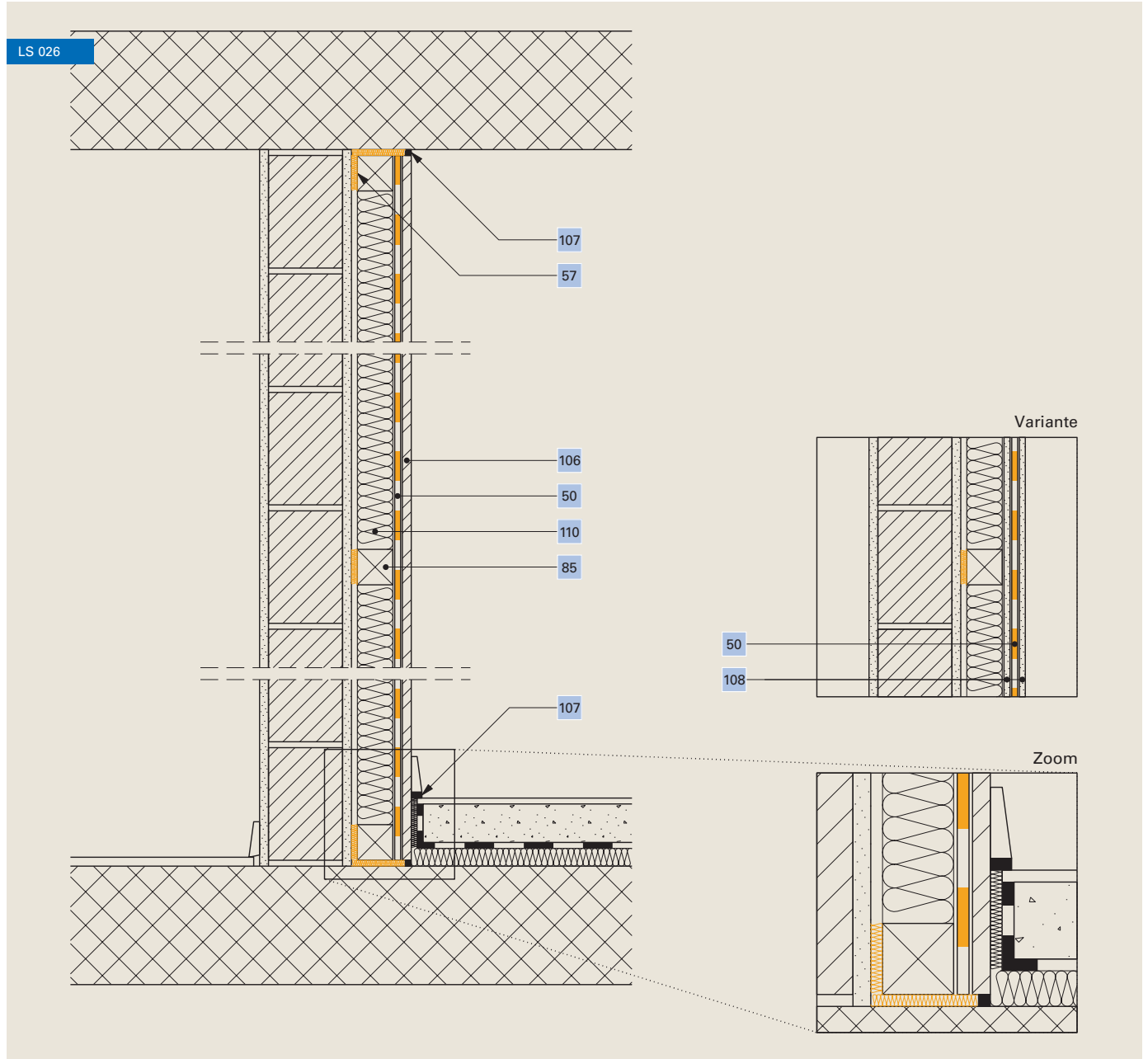
With C-profiles, renovation



50	Heavy foil Idikell® M 4021/05	107	Permanently-elastic cemented joint
57	Felt strip 5 mm Ampaphon® Z 101/05, 60 mm	110	Cavity insulation
100	Plasterboard 12,5 mm	118	Metal stand 75 mm

Noise protection, ancillary panel

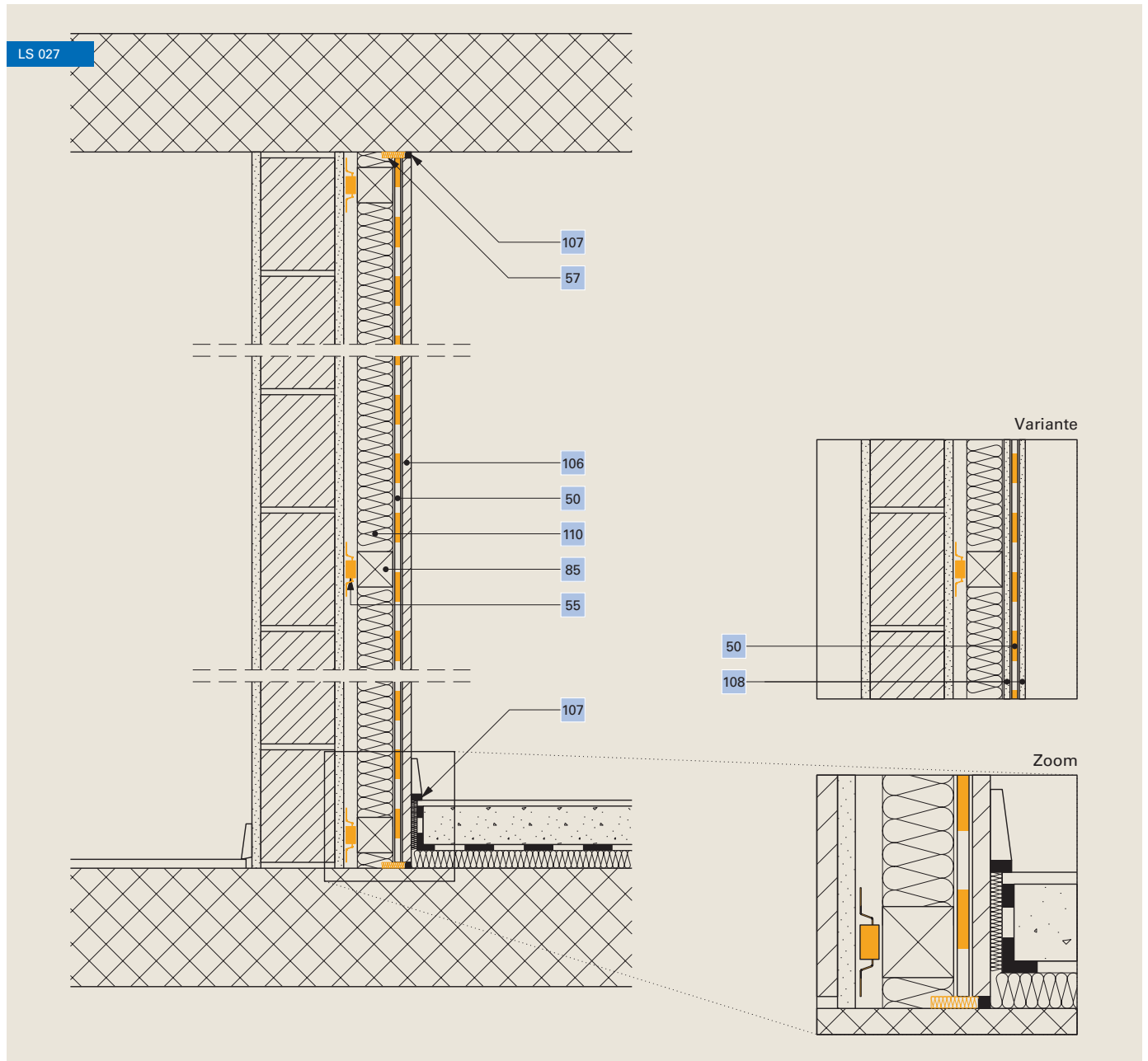
With battens, renovation



50	Heavy foil Idikell® M 4021/05	107	Permanently-elastic cemented joint
57	Felt strip 5 mm Ampaphon® Z 101/05, 60 mm	108	Plasterboard 2x10 mm
85	Batten	110	Cavity insulation
106	Chipboard 16 – 20 mm		

Noise protection, ancillary panel

With vibration element, renovation



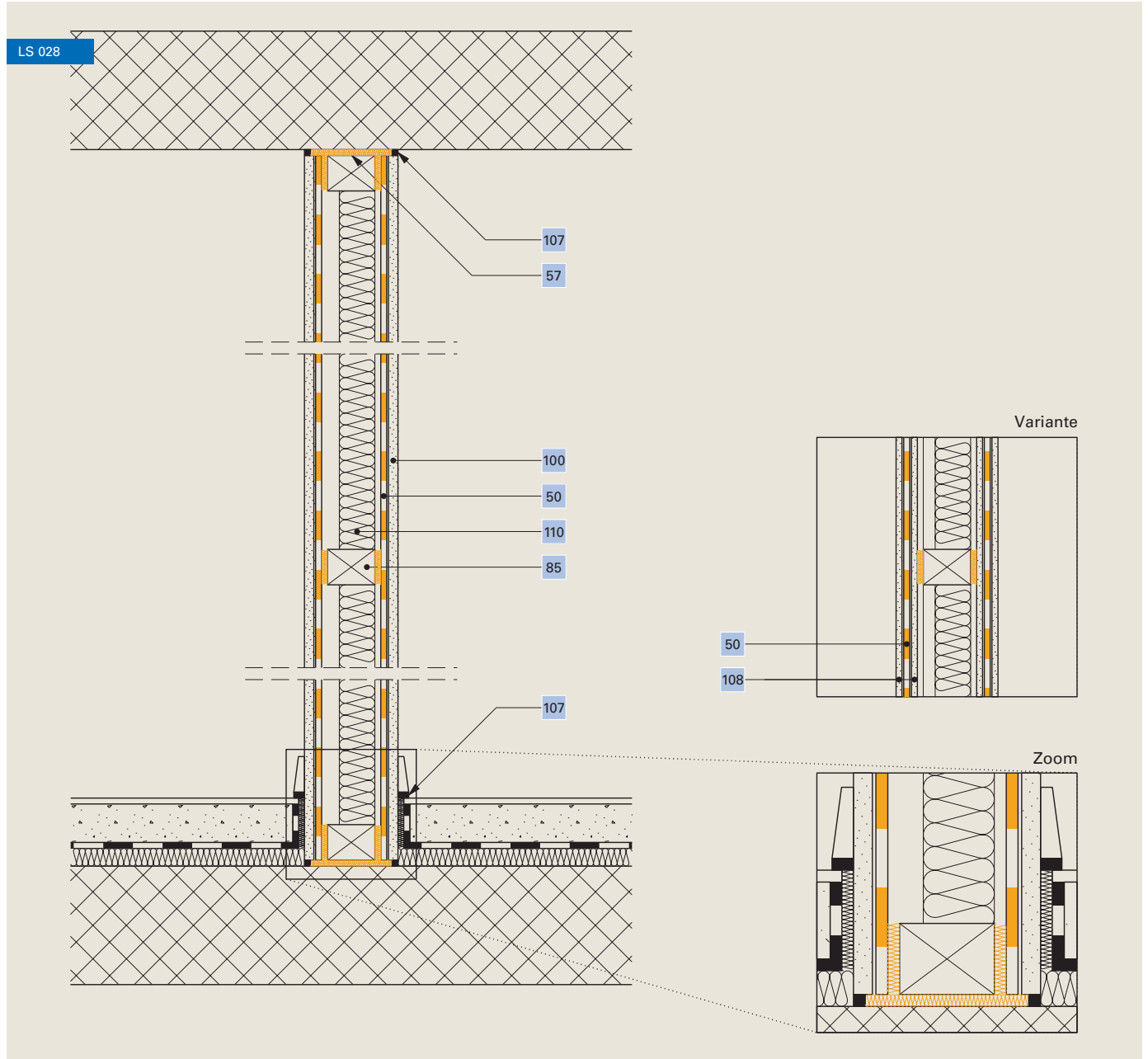
50	Heavy foil Idikell® M 4021/05	106	Chipboard 16 – 20 mm
55	Vibration element Ampaphon® Z 600, approx. 3 pcs. / m²	107	Permanently-elastic cemented joint
57	Felt strip 5 mm Ampaphon® Z 101/05, 60 mm	108	Plasterboard 2x10 mm
85	Batten	110	Cavity insulation

Ampack Switzerland:
+41 71 858 38 00
www.ampack.eu



Noise protection, separation wall

Normal requirements, wooden stand



50	Heavy foil Idikell® M 4021/05	107	Permanently-elastic cemented joint
57	Felt strip 5 mm Ampaphon® Z 101/05 , 60 mm	108	Plasterboard 2x10 mm
85	Support structure min. 80 mm	110	Cavity insulation
100	Plasterboard or chipboard 16 – 20 mm		